

## TECHNICAL ADVISORY COMMITTEE

Thursday, September 1, 2011, 9:30 a.m.

Transportation Agency for Monterey County Conference Room  
55-B Plaza Circle, Salinas

### AGENDA

Complete agenda packets are on display at the Transportation Agency for Monterey County office and at these public libraries: Carmel, Monterey, Salinas Steinbeck Branch, Seaside, Prunedale, and King City. Any person who has a question concerning an item on this agenda may call the Agency Secretary to make inquiry concerning the nature of the item described on the agenda. Please recycle this agenda.

1. **ROLL CALL:** *Call to order and self-introductions. According to Transportation Agency and Committee bylaws, Committee membership consists of representatives from the Transportation Agency voting and ex-officio members, and other agencies that may be appointed by the Transportation Agency. Currently the Committee membership includes representatives from 12 Cities, the County, MST, Caltrans, City of Watsonville, the Air District, and AMBAG, for a total of 18 members. Five members of the Technical Advisory Committee, representing voting members of the Transportation Agency Board of Directors, constitute a quorum for transaction of the business of the committee. If you are unable to attend, please contact the Committee coordinator. Your courtesy to the other members to assure a quorum is appreciated.*
  
2. **PUBLIC COMMENTS:** Any member of the public may address the Committee on any item not on the agenda but within the jurisdiction of Transportation Agency and Technical Advisory Committee. Comments on items on today's agenda may be given when that agenda item is discussed.

---

**BEGINNING OF CONSENT AGENDA:** Approve the staff recommendations for item 3.1 below by majority vote with one motion. Any member may pull an item off the Consent Agenda to be moved to the end of the **CONSENT AGENDA** for discussion and action.

- 3.1 **APPROVE** minutes of the Technical Advisory Committee meeting of August 4, 2011. – Mike Zeller **Pages 5 - 7**

---

**END OF CONSENT AGENDA**

---

4. **RECEIVE** report on funding and schedule for the 2012 State Transportation Improvement Program. – Muck **Pages 8 - 9**

*The 2012 State Transportation Improvement Program (STIP) Fund Estimate provides programming targets for Regional STIP and Transportation Enhancement program funds for the 2012/13 to 2016/17 periods. The Transportation Agency will be adopting its programming requests by its December 7, 2012 Board of Directors meeting.*

5. **DISCUSS** and **PROVIDE** comments on the proposed trip rate reductions and areas eligible for adjusted infill trip rates; and **RECOMMEND** approval to the Transportation Agency Board of draft trip rate reductions and infill area maps. – Zeller **Pages 10 - 18**

*The Board directed staff to return with information on potential fee reductions for infill developments and to develop a map of infill areas eligible for the reductions. Staff circulated a draft set of maps to solicit comments from the jurisdictions and revised the maps based on comments received.*

6. **ANNOUNCEMENTS** and/or **COMMENTS** from Technical Advisory Committee members.00 **No Enclosure**

7. **ADJOURNMENT.**

Next Committee meeting will be on  
Thursday, October 6, 2011 at 9:30 a.m.  
TAMC Conference Room  
55-B Plaza Circle, Salinas

Technical Advisory Committee Agenda of Thursday, September 1, 2011

**REMINDER:** If you have any items for the next Committee Agenda, please submit them to: Transportation Agency for Monterey County; Attn: Todd Muck; 55-B Plaza Circle, Salinas, CA 93901, E-mail: [todd@tamcmonterey.org](mailto:todd@tamcmonterey.org).

Documents relating to an item on the open session that are distributed to the Committee less than 72 hours prior to the meeting shall be available for public inspection at the office of the Transportation Agency for Monterey County, 55-B Plaza Circle, Salinas, CA. Documents distributed to the Committee at the meeting by staff will be available at the meeting; documents distributed to the Committee by members of the public shall be made available after the meeting.

**Transportation Agency for Monterey County  
55-B Plaza Circle, Salinas, CA 93901-2902  
Monday thru Friday  
8:00 a.m. – 5:00 p.m.  
TEL: 831-775-0903  
FAX: 831-775-0897**

**CORRESPONDENCE, REPORTS, MEDIA CLIPPINGS**

Online at [www.tamcmonterey.org](http://www.tamcmonterey.org)

The Committee Agenda will be prepared by Agency staff and will close at noon Friday, September 23, 2011 nine (9) working days before the regular meeting. Any member may request in writing an item to appear on the agenda. The request shall be made by the agenda deadline and any supporting papers must be furnished by that time or be readily available.

*If requested, the agenda shall be made available in appropriate alternative formats to persons with a disability, as required by Section 202 of the Americans with Disabilities Act of 1990 (42 USC Sec. 12132), and the federal rules and regulations adopted in implementation thereof. Individuals requesting a disability-related modification or accommodation, including auxiliary aids or services, may contact Transportation Agency at 831-775-0903. Auxiliary aids or services include wheelchair accessible facilities, sign language interpreters, Spanish Language interpreters and printed materials, and printed materials in large print, Braille or on disk. These requests may be made by a person with a disability who requires a modification or accommodation in order to participate in the public meeting, and should be made at least 72 hours before the meeting. All reasonable efforts will be made to accommodate the request.*

**TRANSPORTATION AGENCY FOR MONTEREY COUNTY  
TECHNICAL ADVISORY COMMITTEE**

Meeting Held At The  
Transportation Agency for Monterey County Conference Room  
55-B Plaza Circle, Salinas  
Draft Minutes of August 4, 2011

|  | SEP<br>10 | OCT<br>10 | NOV<br>10 | JAN<br>11 | FEB<br>11 | MAR<br>11 | APR<br>11 | MAY<br>11 | JUN<br>11 | AUG<br>11 |
|--|-----------|-----------|-----------|-----------|-----------|-----------|-----------|-----------|-----------|-----------|
| Marc Wiener – Carmel-by-the-Sea                          | <b>C</b>  | -         | -         | <b>C</b>  | -         | -         | -         | <b>C</b>  | -         |           |
| M. Ventimiglia – Del Rey Oaks                            | <b>A</b>  | -         | -         | <b>A</b>  | -         | -         | -         | <b>A</b>  | -         |           |
| Rene Mendez - Gonzales (C. Lopez)                        | <b>N</b>  | -         | -         | <b>N</b>  | -         | -         | -         | <b>N</b>  | -         |           |
| Dale Lipp – Vice Chair, Greenfield (M. Ranker)           | <b>C</b>  | P         | P         | <b>C</b>  | P         | P         | E         | <b>C</b>  | P         | P         |
| O. Hurtado – King City (M. Powers)                       | <b>E</b>  | P         | P         | <b>E</b>  | -         | P         | P         | <b>E</b>  | -         |           |
| N. Khayata, Chair, Marina (M. Bozorginia)                | <b>L</b>  | P         | P         | <b>L</b>  | P         | P         | P         | <b>L</b>  | P         | P         |
| R. Deal, – Monterey, (A. Renny)                          | <b>L</b>  | P         | P         | <b>L</b>  | P         | P         | -         | <b>L</b>  | P         |           |
| Jim Becklenberg– Pacific Grove (Mike Zimmer)             | <b>E</b>  | -         | -         | <b>E</b>  | P         | -         | P(A)      | <b>E</b>  | -         | P(A)      |
| J. Serrano – Salinas (R. Russell)                        | <b>D</b>  | P         | P         | <b>D</b>  | P         | P         | P         | <b>D</b>  | P         |           |
| S. Matarazzo – Sand City (R. Simonitch)                  |           | -         | -         |           | -         | -         | -         |           | -         |           |
| L. Llantero – Seaside                                    |           | P(A)      | -         |           | P(A)      | P(A)      | -         |           | -         | P         |
| Clif Price–Soledad (P. Le)                               |           | -         | -         |           | -         | -         | -         |           | -         |           |
| P. Lopez, MCPW ( <del>R. Sauerwein</del> , R. Martinez)  |           | P         | P         |           | P         | -         | P         |           | P         | P         |
| N. Nichols- Monterey County Redevelopment (K. Garza)     |           | -         | -         |           | P         | P         | -         |           | P         | P         |
| R. Deshazo - AMBAG (B. Patel)                            |           | P(A)      | -         |           | P         | P(A)      | -         |           | -         |           |
| B. Rider– Caltrans (M. McCumsey, <del>J. Olejnik</del> ) |           | P(A)      | P         |           | P(A)      | P(A)      | P(A)      |           | VC        | P(A)      |
| A. Romero– MBUAPCD                                       |           | P         | P         |           | P(A)      | P(A)      | -         |           | P         | P         |
| J. Feeney – FORA (J. Arnold)                             |           | -         | -         |           | -         | -         | -         |           | P         |           |
| H. Harvath – MST (M. Hernandez, M. Gallant)              |           | P(A)      | P(A)      |           | -         | P(A)      | -         |           | -         | P(A)      |
| Debbie Hale  |           |           | E         |           | -         | -         | -         |           | P         |           |
| Don Bachman  |           |           | E         |           | -         | -         | -         |           | -         |           |
| Mike Zeller  |           | P         | P         |           | P         | P         | -         |           | P         | P         |
| Kaki Cheung  |           |           | -         |           |           | P         | P         |           | P         |           |
| Andy Cook  |           | P         | -         |           | P         | P         | -         |           | P         |           |
| Todd Muck  |           | P         | P         |           | P         | P         | P         |           | P         | P         |
| Hank Myers   |           |           | P         |           | P         | P         | P         |           | -         | P         |
| Christina Watson   |           |           | P         |           | -         | -         | -         |           | -         |           |

**OTHERS PRESENT:**

|             |                     |               |       |
|-------------|---------------------|---------------|-------|
| Jim Cullem  | Harris & Associates | Megan Tolbert | CSUMB |
| Mike Cooper | URS                 |               |       |

Chair Khayata, City of Marina, called the meeting to order at 9:42 a.m.

**1. ROLL CALL**

Roll call was taken, and a quorum was confirmed.

**2. PUBLIC COMMENTS**

None this month.

**3. BEGINNING OF CONSENT AGENDA**

---

M/S/C Lipp/Romero/unanimous

3.1 Approved minutes of the Technical Advisory Committee meeting of June 2, 2011.

**END OF CONSENT AGENDA**

---

**4. REGIONAL FEE – INFLATION ADJUSTMENT & INFILL TRIP RATES**

The Committee received information on the 2011 regional fee inflation adjustment; and discussed and provided comments on the proposed trip rate reductions and areas eligible for adjusted infill trip rates.

Mike Zeller, Associate Transportation Planner, reported as part of the Joint Powers Agreement, the Transportation Agency is required to annually adjust the regional fees for inflation based on Engineering News Record Construction Cost Index. Also, he presented staff’s proposal for adjusting trip generation rates for developments located in infill areas and requested that the jurisdictions provide information on where these types of developments are likely to occur within their cities. The committee requested that staff prepare a draft set of maps for comment and to circulate to the committee members.

**5. MONTEREY COUNTY RAIL PROJECTS**

The Committee received overview of proposed passenger rail services in Monterey County, California.

Don Bachman, Deputy Director, reported the Transportation Agency is planning two rail projects for Monterey County. In addition, the Coast Rail Coordinating Council is planning a new intercity rail service that will traverse Monterey County.

6. **TRANSPORTATION AGENCY CONTRIBUTION TO LOCAL STREETS AND ROADS  
NEEDS ASSESSMENT**

M/S/C Lopez/Lipp/unanimous

The Committee recommended Transportation Agency Board of Directors allocate Regional Surface Transportation Program funds for our proportionate share of updating the Statewide Local Streets and Roads Needs Assessment.

Todd Muck, Principal Transportation Planner, reported the Local Streets and Roads Needs Assessment provides a valuable tool to educate the public, local, state and federal officials on the condition and needs of the local streets and roads system. He noted that contributions from regional transportation planning agencies, cities and counties are being solicited to cover the cost of updating the assessment.

7. **ANNOUNCEMENTS AND/OR COMMENTS**

None this month.

8. **ADJOURNMENT**

Chair Khayata adjourned the meeting at 10:31 a.m.



TRANSPORTATION AGENCY FOR MONTEREY COUNTY

## Memorandum

**To:** Technical Advisory Committee  
**From:** Todd Muck, AICP, Principal Transportation Planner  
**Meeting Date:** September 1, 2011  
**Subject:** **2012 State Transportation Improvement Program**

---

### **RECOMMENDED ACTION:**

**RECEIVE** report on funding and schedule for the 2012 State Transportation Improvement Program.

### **SUMMARY:**

The 2012 State Transportation Improvement Program (STIP) Fund Estimate provides programming targets for Regional STIP and Transportation Enhancement program funds for the 2012/13 to 2016/17 periods. The Transportation Agency will be adopting its programming requests by its December 7, 2012 Board of Directors meeting.

### **FINANCIAL IMPACT:**

Monterey County's total State Transportation Improvement Program Fund Estimate targets for the five year period are:

- Minimum target: \$39,630,000.
- Maximum target: \$67,734,000.
- Amount that can be programmed for the Transportation Agency's operations: \$1,352,000
- Target for Transportation Enhancement projects: \$1,648,000.

### **DISCUSSION:**

The 2012 State Transportation Improvement Program will be adopted by the California Transportation Commission on March 28, 2012. The 2012 STIP will cover the period from fiscal year 2012/13 to 2016/17. Programming decisions will be based on the 2012 STIP Fund Estimate that were adopted by the California Transportation Commission at their August 10, 2011 meeting. The Transportation Agency must submit its programming proposals via its Regional Transportation Improvement Program by December 15, 2011.

Seventy-five percent of State Transportation Improvement Program funds are allocated to counties per State law. The remaining twenty-five percent of STIP funding is allocated to interregional projects. Caltrans proposes projects through the STIP process to be programmed with the interregional share of the STIP funds.

While overall the 2012 State Transportation Improvement Program Fund Estimate includes new capacity to program projects, all of this new capacity is in the last three years of the 2012 STIP cycle. Statewide, some projects programmed in 2012-13 will need to be moved to future years when sufficient program capacity is estimated to be available.

Transportation Agency staff will begin drafting a 2012 Regional Transportation Improvement Program proposal based on the regional priorities set by the Board at their May 2011 meeting. Coordination with Caltrans and other regional partners will be initiated to improve the chances of Interregional STIP funds be proposed for projects in Monterey County.

Federal Transportation Enhancement funds are commonly programmed to bicycle and pedestrian projects. Monterey County's target for federal Transportation Enhancement funds for the 2012 State Transportation Improvement Program cycle is \$780,000 in fiscal year 2015/16 and \$768,000 in fiscal year 2016/16. Monterey County also has a Transportation Enhancement reserve balance of \$339,000 in fiscal year 2014/15 in the current STIP. The Transportation Agency Board of Directors will have to decide if it wishes to program the TE funds to specific projects, defer programming by placing the funds in TE Reserve, or not programming TE funds in this STIP cycle.

Approved by: \_\_\_\_\_ Date Signed: \_\_\_\_\_  
Debra L. Hale, Executive Director

Regular Agenda

Reviewed by Counsel: N/A



## Memorandum

**To:** Technical Advisory Committee  
**From:** Michael Zeller, Associate Transportation Planner  
**Meeting Date:** September 1, 2011  
**Subject:** Regional Fee – Infill Trip Rates and Maps

### **RECOMMENDED ACTION:**

1. **DISCUSS** and **PROVIDE** comments on the proposed trip rate reductions and areas eligible for adjusted infill trip rates; and
2. **RECOMMEND** approval to the Transportation Agency Board of draft trip rate reductions and infill area maps.

### **SUMMARY:**

The Board directed staff to return with information on potential fee reductions for infill developments and to develop a map of infill areas eligible for the reductions. Staff circulated a draft set of maps to solicit comments from the jurisdictions and revised the maps based on comments received.

### **FINANCIAL IMPACT:**

The proposed trip rate reductions for infill developments could reduce revenues up to \$6.4 million. With these changes, the fee program is expected to generate \$243 million, with one-percent reimbursing the agency's fee program administrative expenses, to year 2030.

### **DISCUSSION:**

The Regional Development Impact Fee program assesses fees based on the number of new vehicle trips a proposed development will add to the regional transportation system, using the Institute of Transportation Engineers' *Trip Generation 7<sup>th</sup> Edition*. For some land uses, the Institute recommends that a pass-by rate be applied to account for trips that make a stop in between its origin and destination. Pass-by rates have the effect of lowering the trip generation, and regional fees, for a given development.

Transportation studies have shown that developments within infill areas also generate fewer trips than standard developments as reported in the *Trip Generation* manual. This is due to the unique characteristics of these developments, in general, as being located closer to existing transit, in areas of higher density, and subject to zoning ordinances that encourage walking. Other traffic fee programs include similar adjustments, such as the City of Salinas and City of Soledad, and the San Diego Association of Governments has developed a study on the effects of smart growth development on trip generation. Staff contracted with Wood Rodgers to provide the technical analysis of the types of developments that would qualify as "infill" and the following reductions were identified:

**Table 1: Draft Trip Rate Reductions by Land Use Type**

| <b>Residential or Industrial</b> | <b>Retail</b> | <b>Office</b> |
|----------------------------------|---------------|---------------|
| 10%                              | 15%           | 20%           |

To make implementation of the revised fees easier for the jurisdictions, staff contracted with Wood Rodgers to prepare infill area maps. The maps will designate areas in the region that meet the specific characteristics of infill development outlined in the technical memo (also prepared by Wood Rodgers). Developments falling outside of these areas would still be eligible for trip reductions through the existing appeals process. The following criteria were used to identify appropriate sites as infill:

1. Locations with 5,000 or more employees working within a 1-mile radius;
1. Residential with a minimum density of 12 dwelling units per net acre, or non-residential with a minimum floor area ratio of 1.0;
2. Transit service located within a ½ mile;
3. A parcel has to be currently vacant to be considered infill;
4. Under-developed parcels would qualify as refill parcels; and
5. A parcel must be privately owned and located in an “urban” environment.

Exclusions:

- a. Agricultural Parcels;
- b. Recreational/miscellaneous uses such as Golf Course, Cemetery, Mines, etc; and
- c. All urban parcels greater than 5 acres.

After this quantitative analysis, staff further refined the results by using a Geographic Information System to examine the parcels filtered out by the Wood Rodgers infill criteria and comparing the results to existing transit service, bicycle / pedestrian facilities, and the draft Blueprint Planning Areas being developed by the Association of Monterey Bay Area Governments for the Sustainable Communities Strategy effort. Using this qualitative analysis, staff defined areas where instances of higher walking and non-automotive travel were likely, which resulted primarily in each jurisdiction’s downtown areas. These draft maps were then circulated to each of the jurisdictions for comments.

The comments received were used to further refine the infill area maps and the results will be presented at the September 1, 2011 Technical Advisory Committee meeting, where staff will be seeking to finalize comments on the proposed trip rate reductions and draft infill maps. Staff anticipates taking a final package to the Board for approval at the September 28, 2011 meeting.

Approved by: \_\_\_\_\_ Date signed: \_\_\_\_\_  
Debra L. Hale, Executive Director

Regular Agenda

Counsel Review: N/A

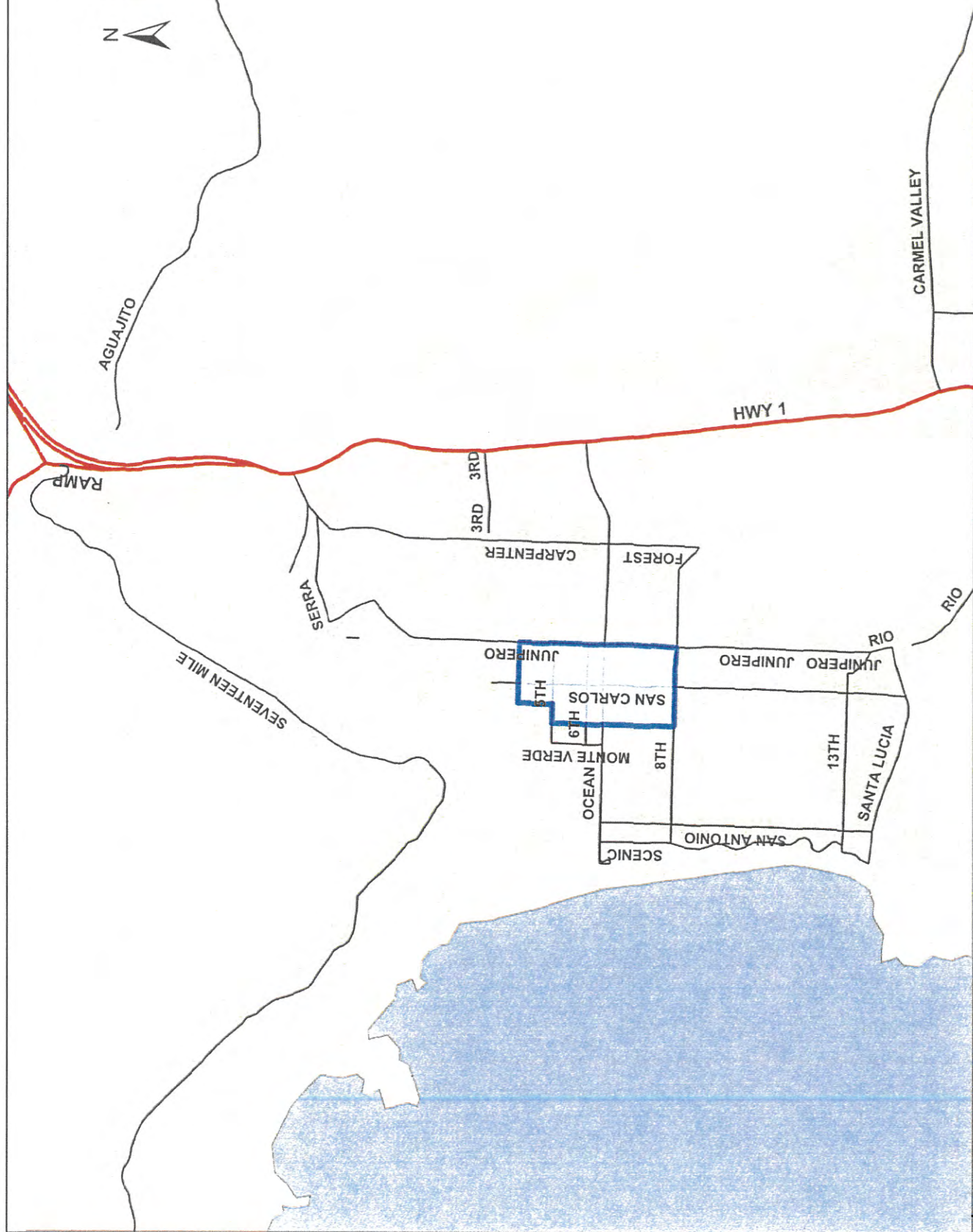
Attachment: Draft Infill Maps

# Carmel

Legend



Infill & Refill Clusters



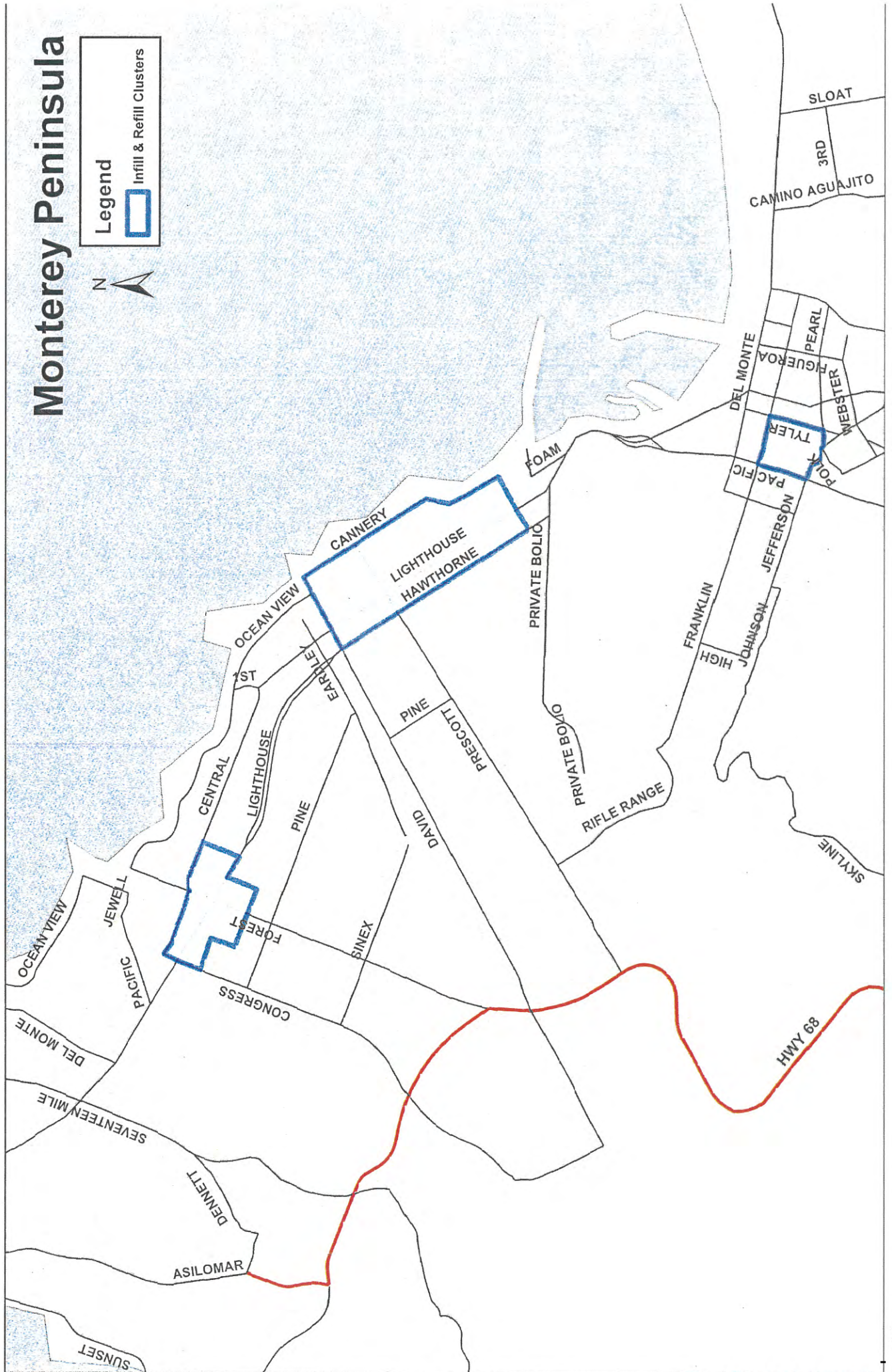
# Monterey Peninsula



Legend



Infill & Refill Clusters

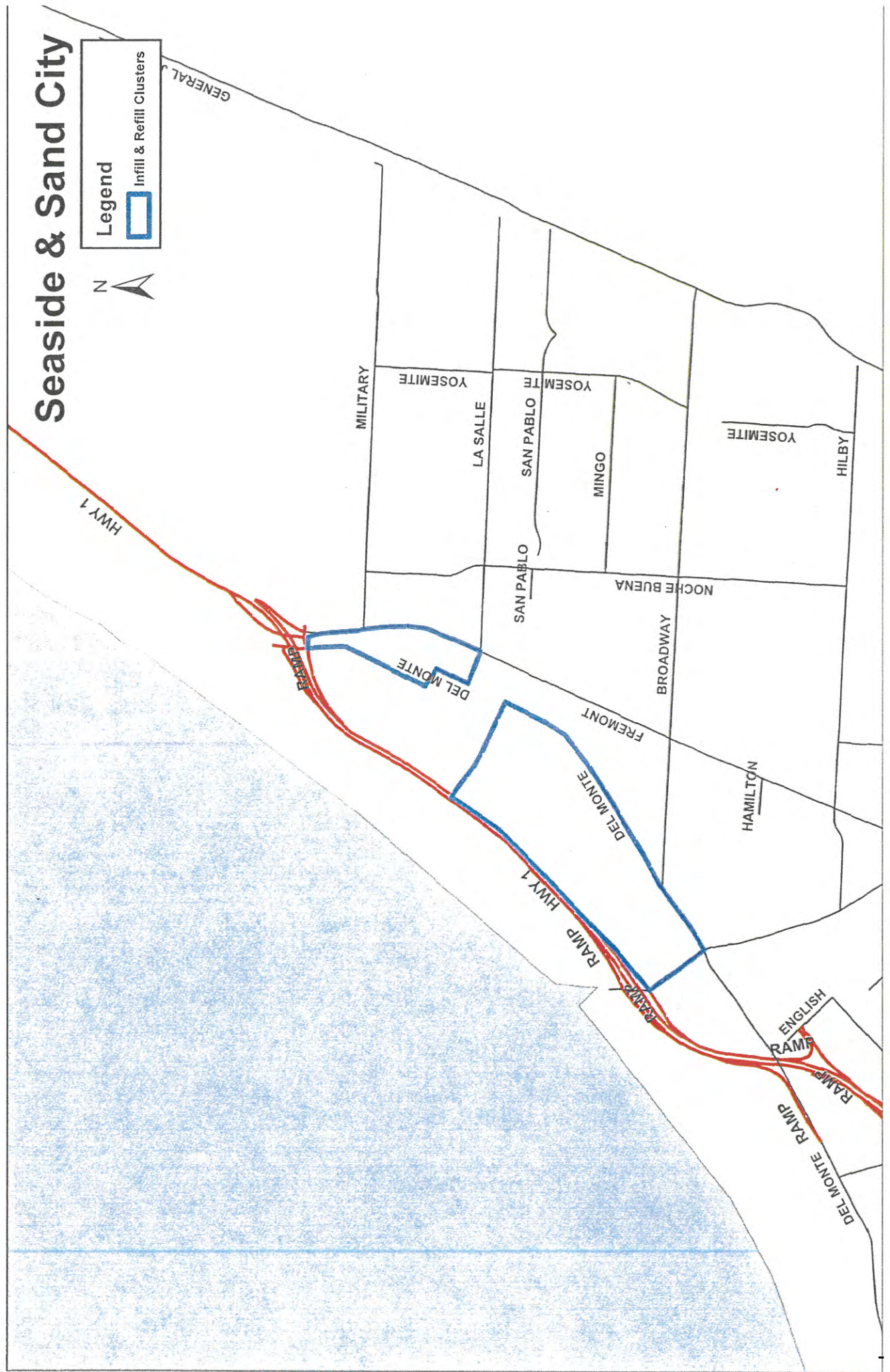


# Seaside & Sand City

Legend



Infill & Refill Clusters



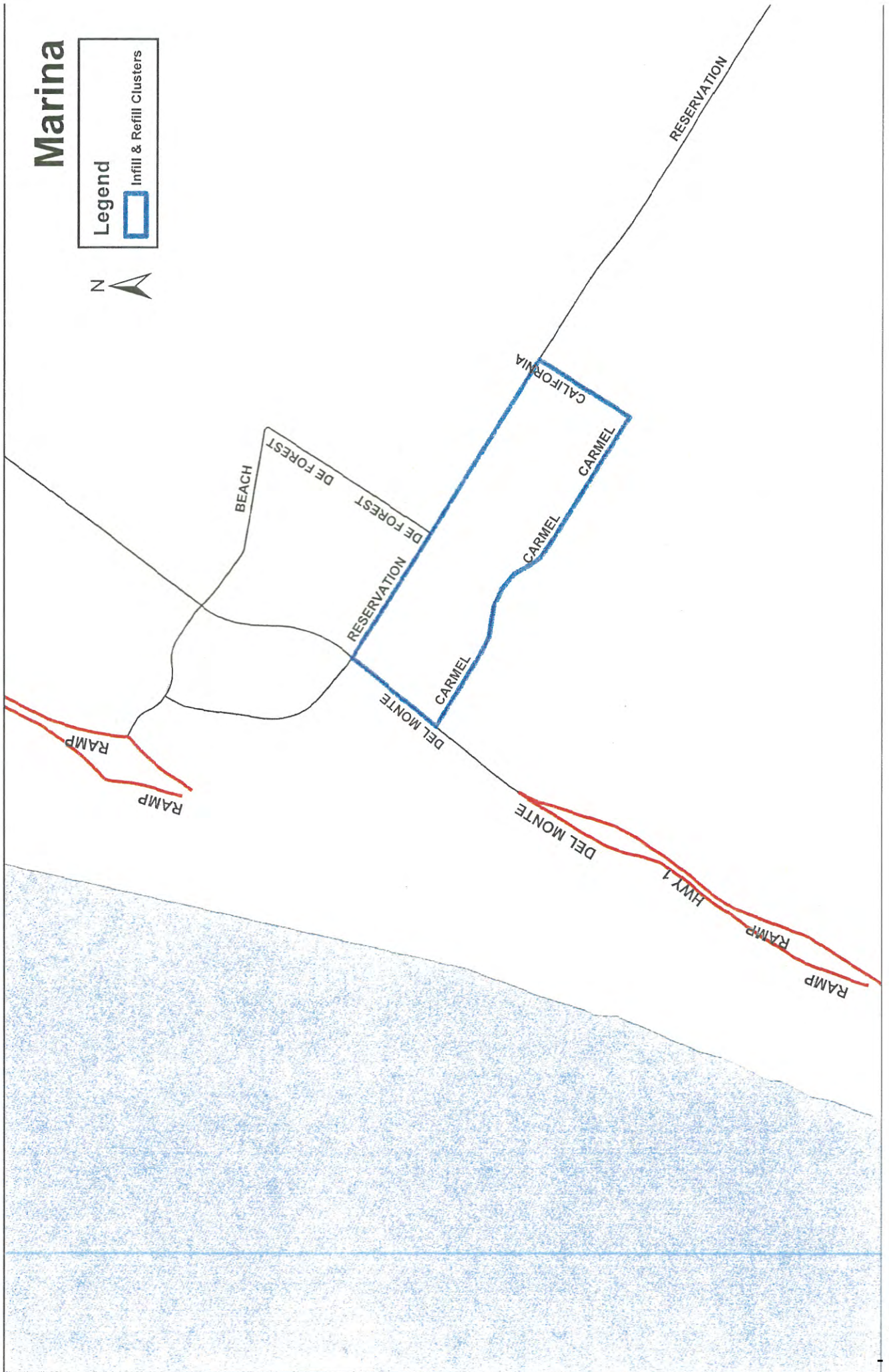
# Marina

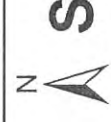


Legend



Infill & Refill Clusters



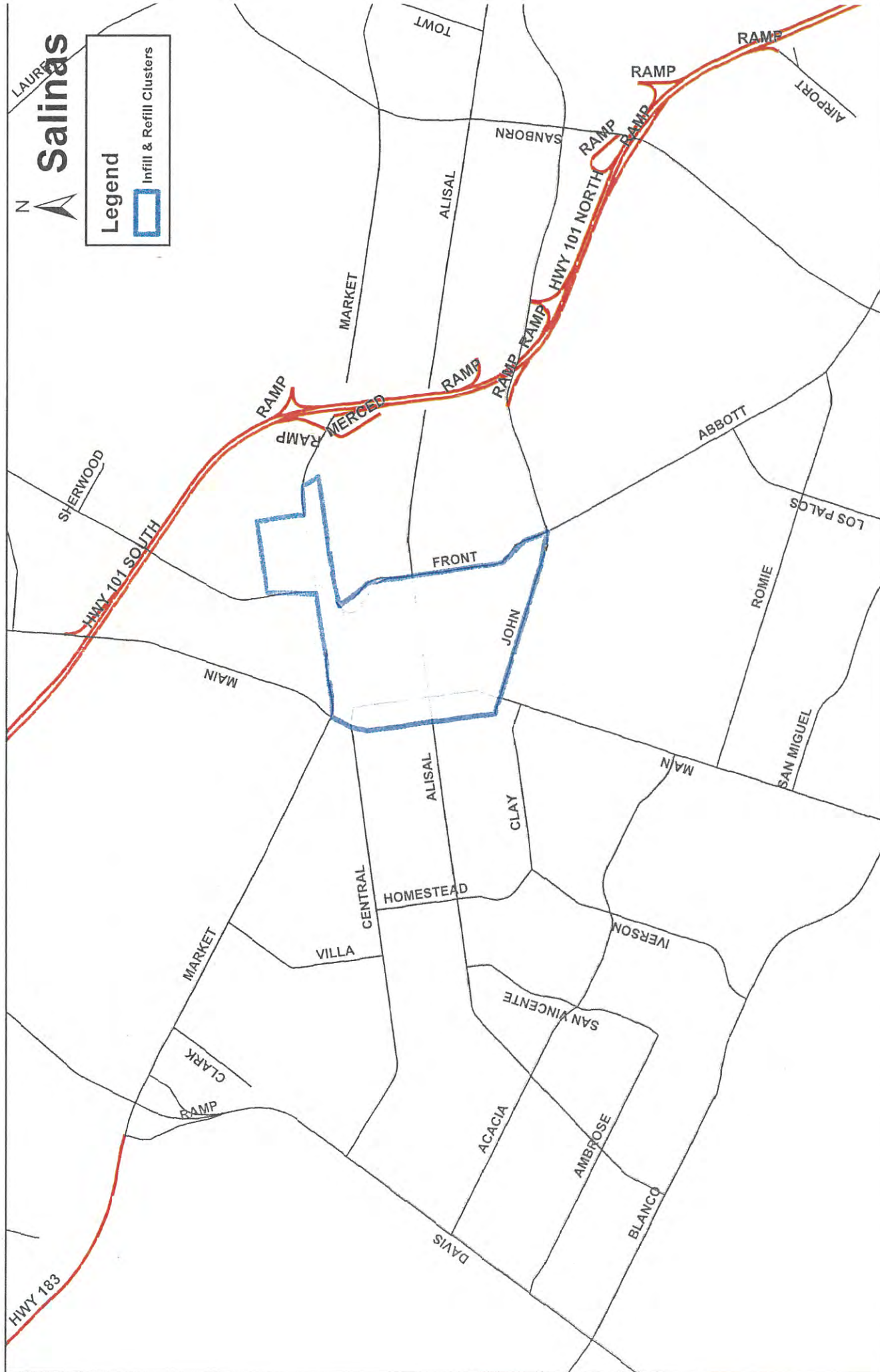


# Salinas

## Legend



Infill & Refill Clusters

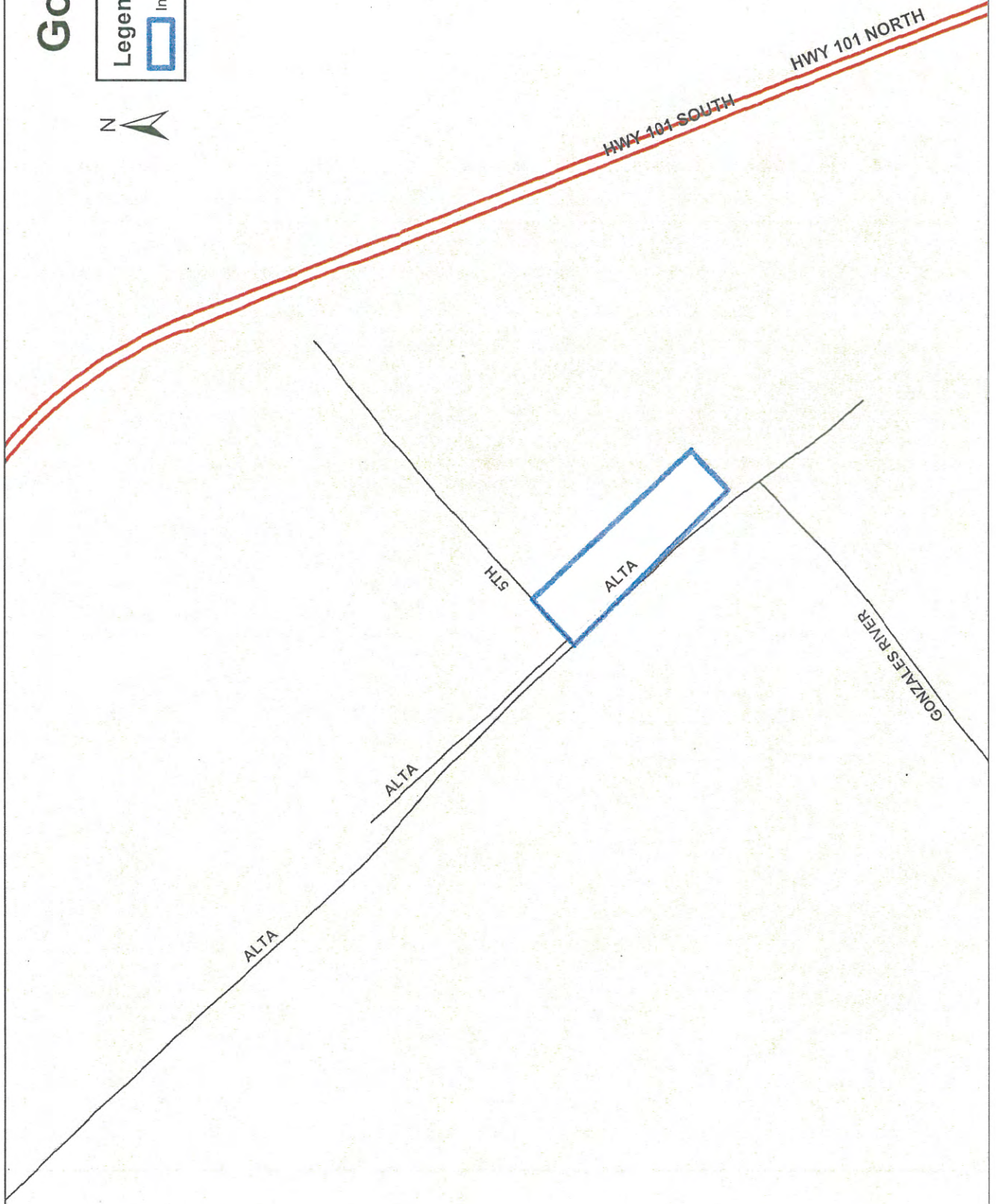


# Gonzales



Legend

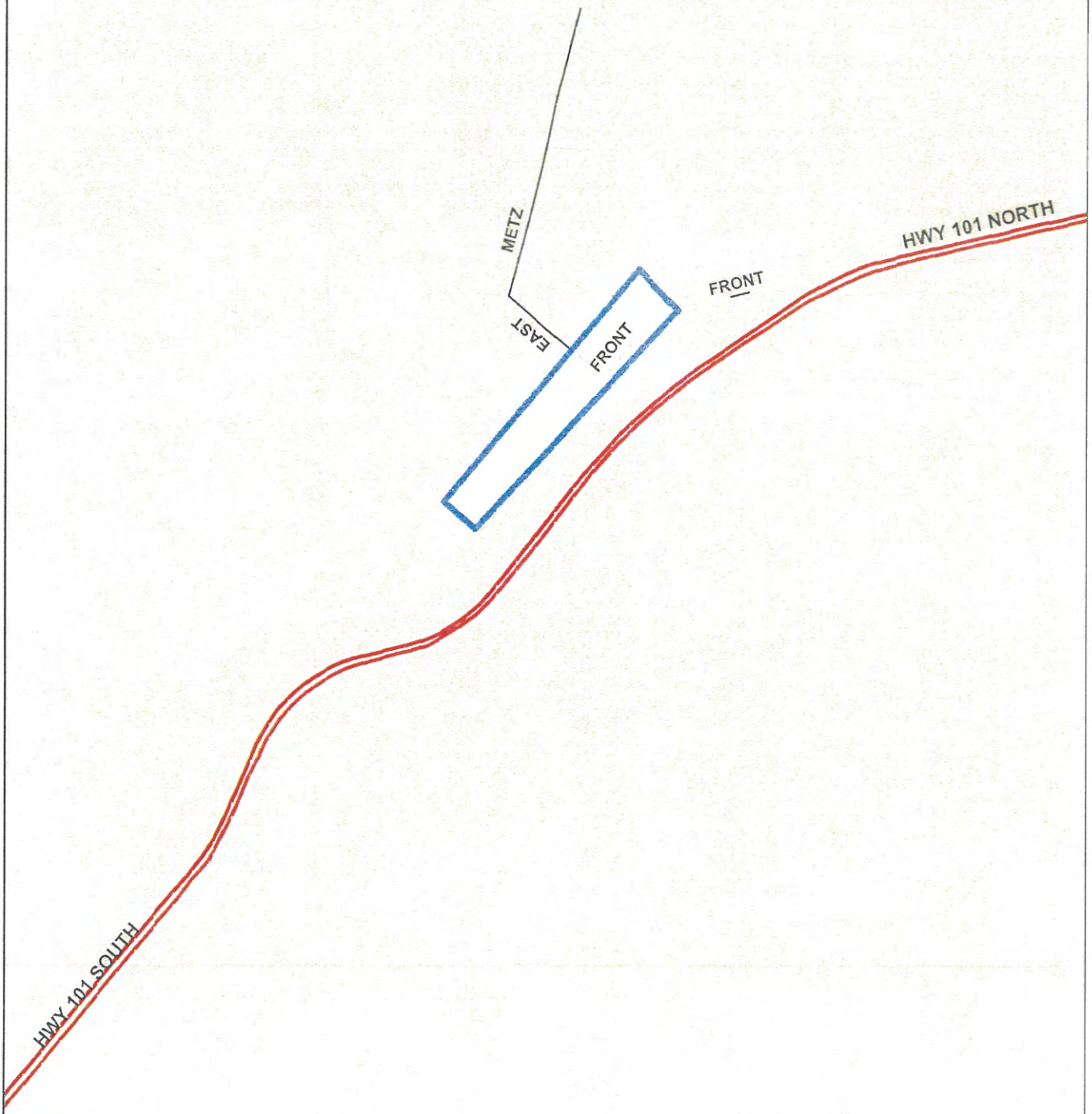

 Infill & Refill Clusters



# Soledad

Legend

Infill & Refill Clusters

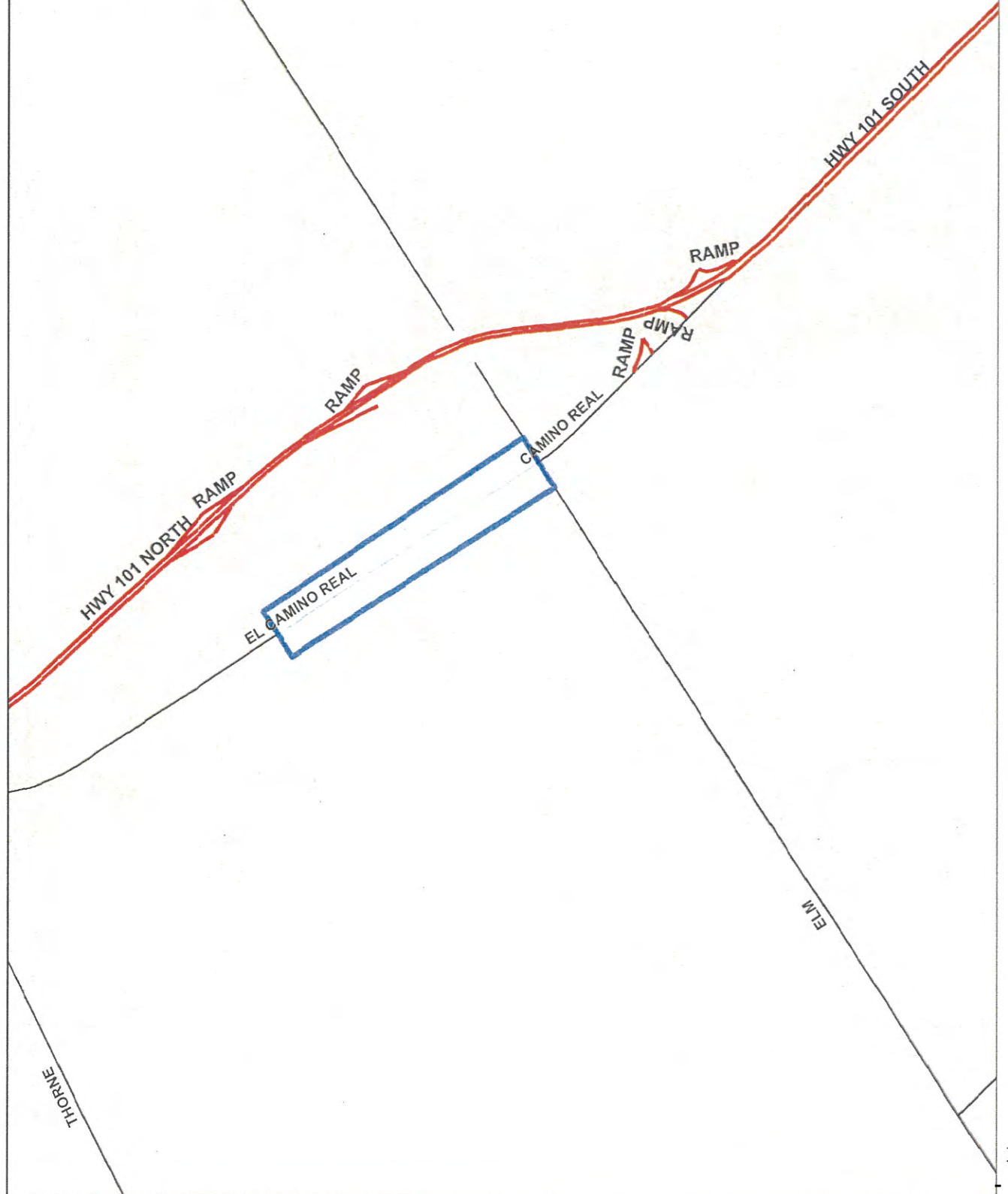


# Greenfield

Legend



Infill & Refill Clusters



# King City

Legend



Infill & Refill Clusters

