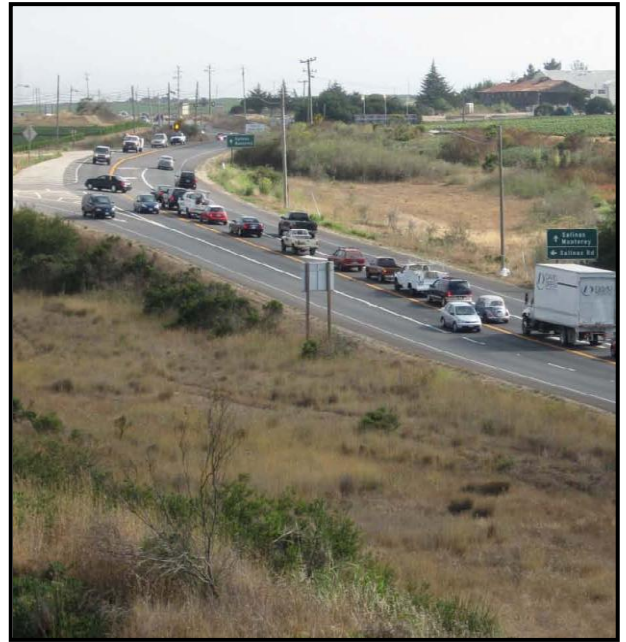


# Salinas Road @ Highway 1 Interchange



## PROJECT DESCRIPTION

The project will construct a new interchange at Salinas Road and Highway 1, north of Moss Landing near the Santa Cruz county line. The new interchange will include construction of a 3 lane structure (Salinas Road) over Highway 1 with 3 diamond-type ramps and one southbound loop on-ramp. A frontage road will be constructed from Jensen Road to Salinas Road west of Highway 1. A frontage road will also be constructed east of Highway 1 to provide access to local businesses.



Existing Salinas Rd./Highway 1 Intersection

## PROJECT BENEFITS

- ▶ Adds vital safety improvements to a high accident intersection  
83 accidents 3 fatalities (2001-05)
- ▶ Reduces delays for 43,000 vehicles per day on Highway 1
- ▶ Supports interregional travel between Highways 1 and 101
- ▶ Improves access for local businesses and residents
- ▶ Minimizes visual and agricultural impacts

## COST ESTIMATE

Total Project Cost: \$30,023,943  
 Project Status: Under Construction  
 Contractor: De Silva Gates

In partnership with:

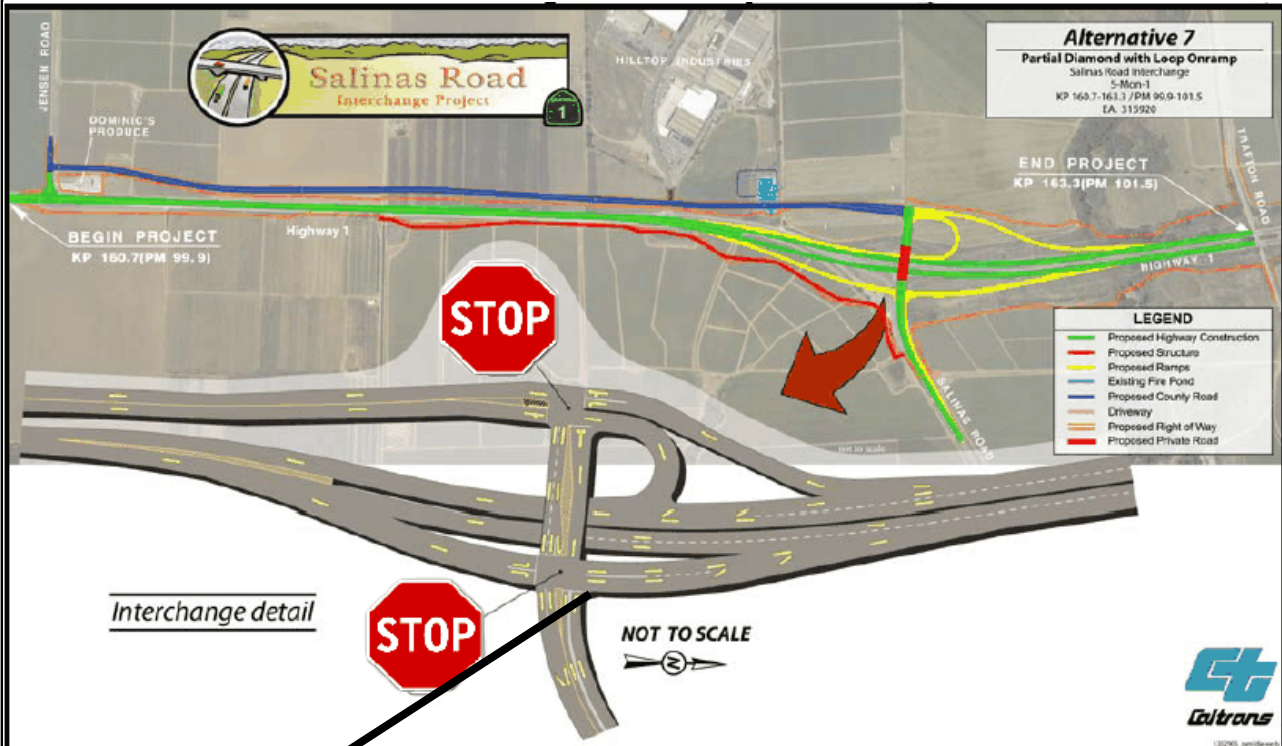


## PROJECT SCHEDULE

<b>Project Complete</b>	<b>July 2013</b>
<b>Begin Construction</b>	<b>April 2010*</b>
<small>*Contract awarded October 2009</small>	
<b>Right-of-Way</b>	<b>2008</b>
<b>Design</b>	<b>2008</b>
<b>Environmental Review Complete</b>	<b>2006</b>

# Salinas Road @ Highway 1 Interchange

## PROJECT LOCATION



Interchange detail



NOT TO SCALE

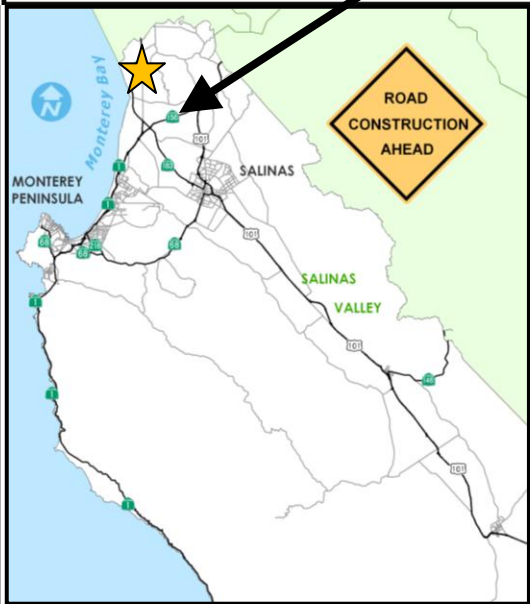


Illustration of preferred Alternative 7

