

SURF! Busway Alignment within the Monterey Branch Line Corridor

TAMC Board of Directors
Meeting

August 28, 2024



Issue:

- California Coastal Commission staff is requiring that the SURF! project be realigned onto the existing rail track alignment to minimize impacts to Environmentally Sensitive Habitat Areas (ESHA).
- If this requirement is not met, Coastal Commission staff will likely recommend denying the project's Coastal Development Permit.

Monterey Branch Line

- TAMC 12.65 miles:
Castroville to Sand
City/Seaside
- Seaside ~ .5 miles
- Monterey ~ 1.9 miles



Monterey Branch Line – Del Monte/Hwy 1



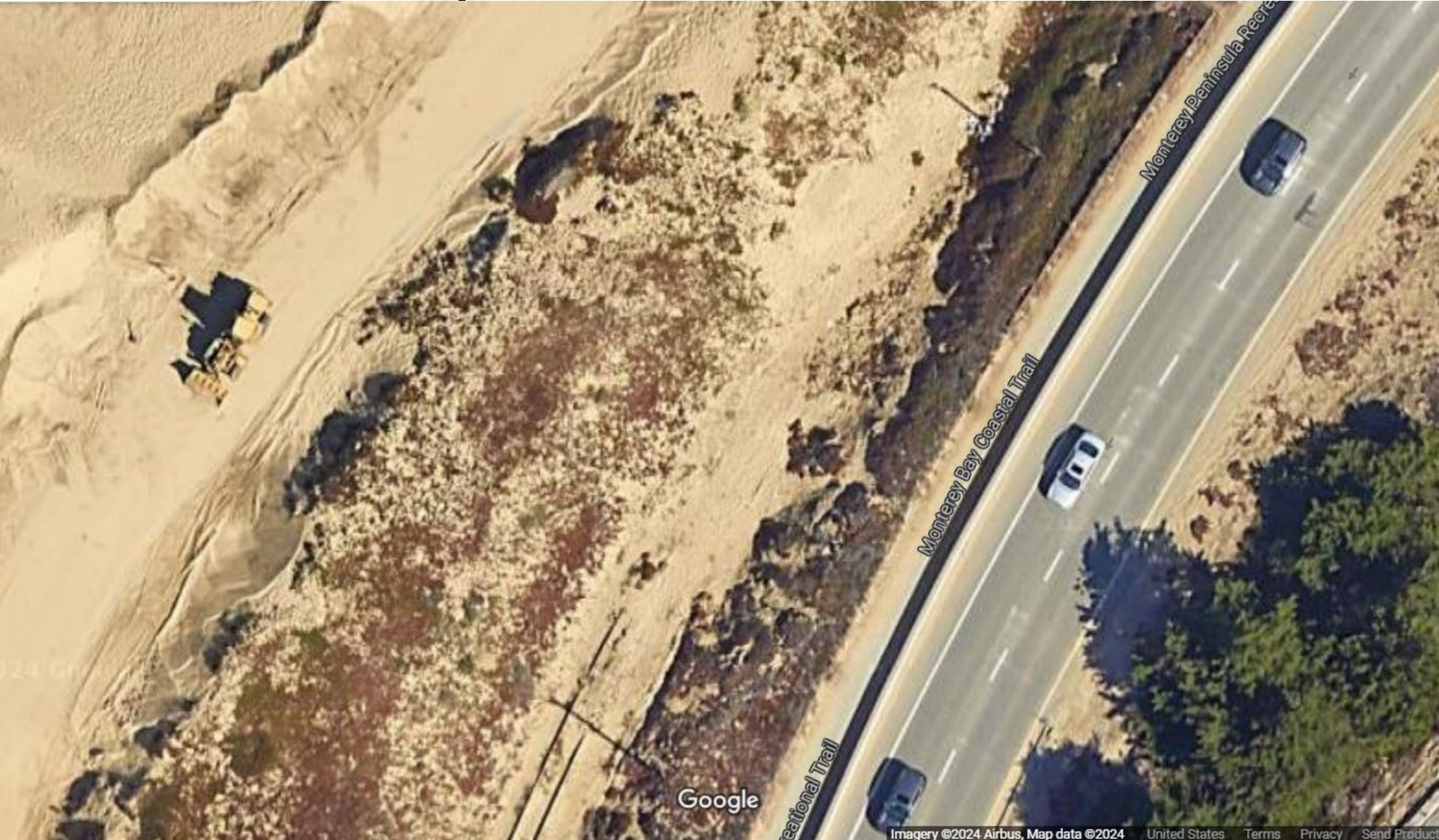
Monterey Branch Line – South of 8th Street



Monterey Branch Line – Scribble Hill



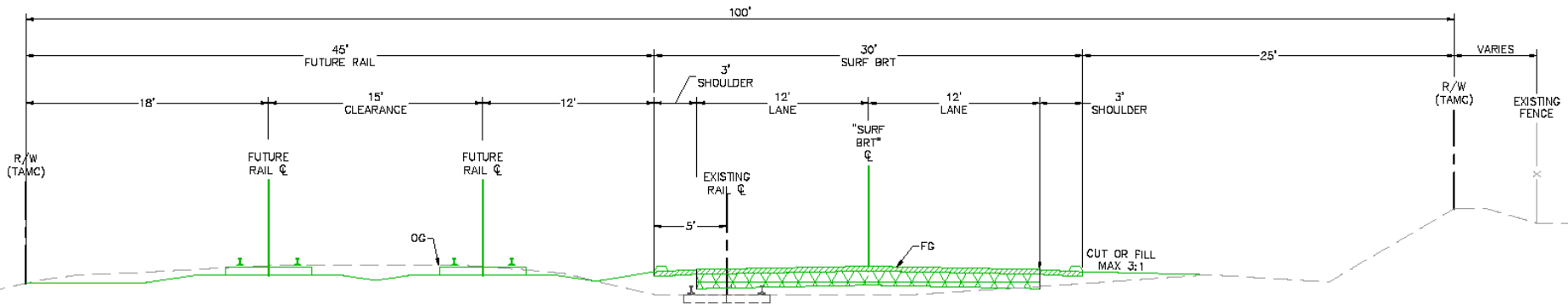
Monterey Branch Line – Eco Resort



Imagery ©2024 Airbus, Map data ©2024 United States Terms Privacy Send Product



Rail Alternative Adjacent to Busway on Current Tracks



DMU SECTION

Recommended conditions if TAMC supports the On-Track Alignment:

- Coastal Commission agreement to not put MBL ROW into conservation easement, further limiting the potential for future rail service.
- Acknowledge the Monterey Branch Line, including portions owned by Monterey and Seaside, is a historic and future transportation corridor.

Requested Action:

Provide Direction and feedback for, or against, supporting an alternative on-track alignment of the SURF! Busway and Bus Rapid Transit Project within the Monterey Branch Line Corridor.