

# Active Transportation Support Program

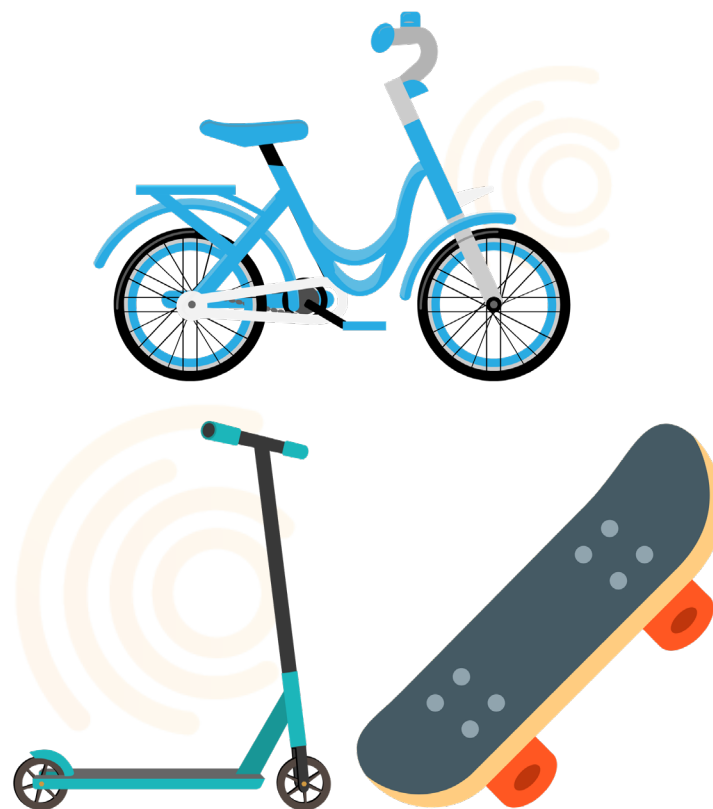
By Ariadne Sambrano



# What is the Active Transportation Support Program?

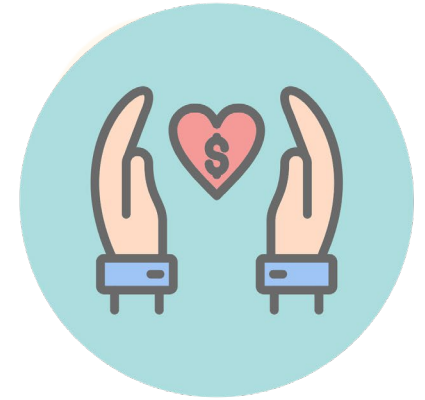
# Goal of the ATSP

- To provide equipment and resources that encourage biking, skating, and other active modes of travel.



# Who Can Apply

- Private businesses
- Local jurisdictions
- Nonprofit organizations
- School districts
- Other public agencies



# Connection to Other TAMC Programs

Works hand-in-hand with:



**Safe Routes  
to School**





**What the program  
provides ?**

# Bicycle racks and lockers



# Support kits & Equipment



# Training resources





**Why does this  
program matter?**

# Addresses 3 Key Issues

- Expands and improves multimodal infrastructure
- Reduces greenhouse gas emissions
- Builds healthier communities





**How can someone  
apply?**

# Application Process for ATSP



- Applications accepted year-round
- Annual Program Budget of \$30,000
- **To apply:**
  - Complete our application
  - Submit application to the BPC Coordinator
  - BPC then reviews and approves project



**How can you help  
support ?**

# Support TAMC Staff

- Share your ideas with TAMC staff of who could benefit from this program
  - Organizations
  - Business
  - Schools
- Share our flyers





Contact Ariadne  
for any questions about the application  
and ideas

[ariadne@tamcmonterey.org](mailto:ariadne@tamcmonterey.org)