

Fiscal Year 2026/27

Budget & Overall Work Program

Board of Directors Meeting

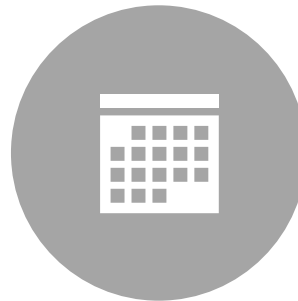
May 27, 2026



Purpose of the Overall Work Program



WORK ELEMENTS
DESCRIBE ACTIVITIES &
TASKS



FISCAL YEAR JULY 1, 2026
TO JUNE 30, 2027



BASIS FOR THE ANNUAL
BUDGET

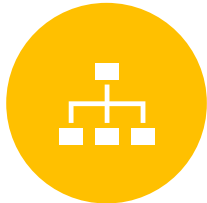
Purpose of the Budget



Business Plan /
Road Map



Spending /
Financial Plan



Reflects Board
Priorities



Translates Plans
(OWP) into
Money



Focus on 1st fiscal
year FY 26-27

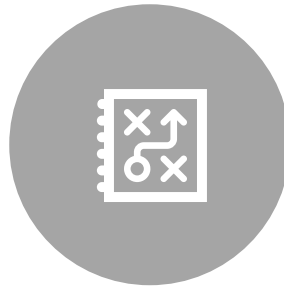


Look ahead
FY 27-28 & 28-29

Purpose of the Integrated Funding Strategy



SNAPSHOT OF
REGIONAL PROGRAMS
& PROJECTS



SCHEDULE AND
FUNDING PATHWAY



SHOWS FUNDS NOT IN
THE BUDGET

FY 26/27 Work Program

Vision Zero strategy

Elm Avenue, Oak Avenue, & Walnut Avenue Traffic Calming



WHY THIS LOCATION?

Elm Avenue and Oak Avenue are two high-crash streets in Greenfield. All three streets cross US 101, and city staff receive many complaints about speeding between 3rd Street and 7th Street.

WHY THESE TREATMENTS?

This project would include several improvements to encourage people to drive slower through town.



Radar Speed Display Signs: Effective at reducing crashes and lowering speeds. Up to 10% crash reduction.



High Visibility Signs and Striping: Visually narrows the travel lane to lower speeds.



Bulbouts at Crosswalks: Lowers speeds by narrowing the road and improves visibility of pedestrians. Up to 35% crash reduction.



Safe Driving Education Campaigns



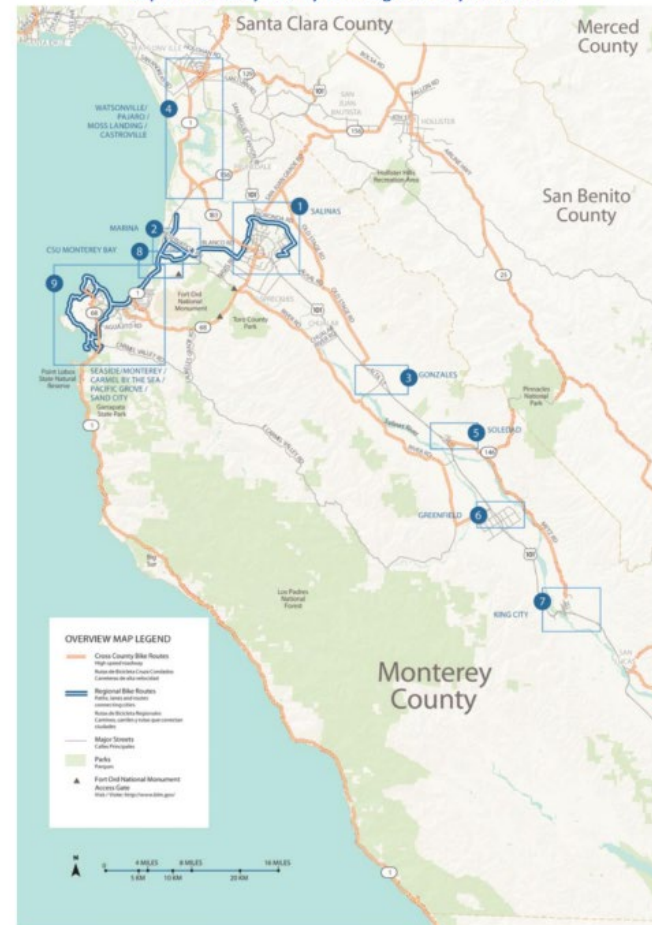
2018 Monterey County Active Transportation Plan



FY 26/27 Work Program

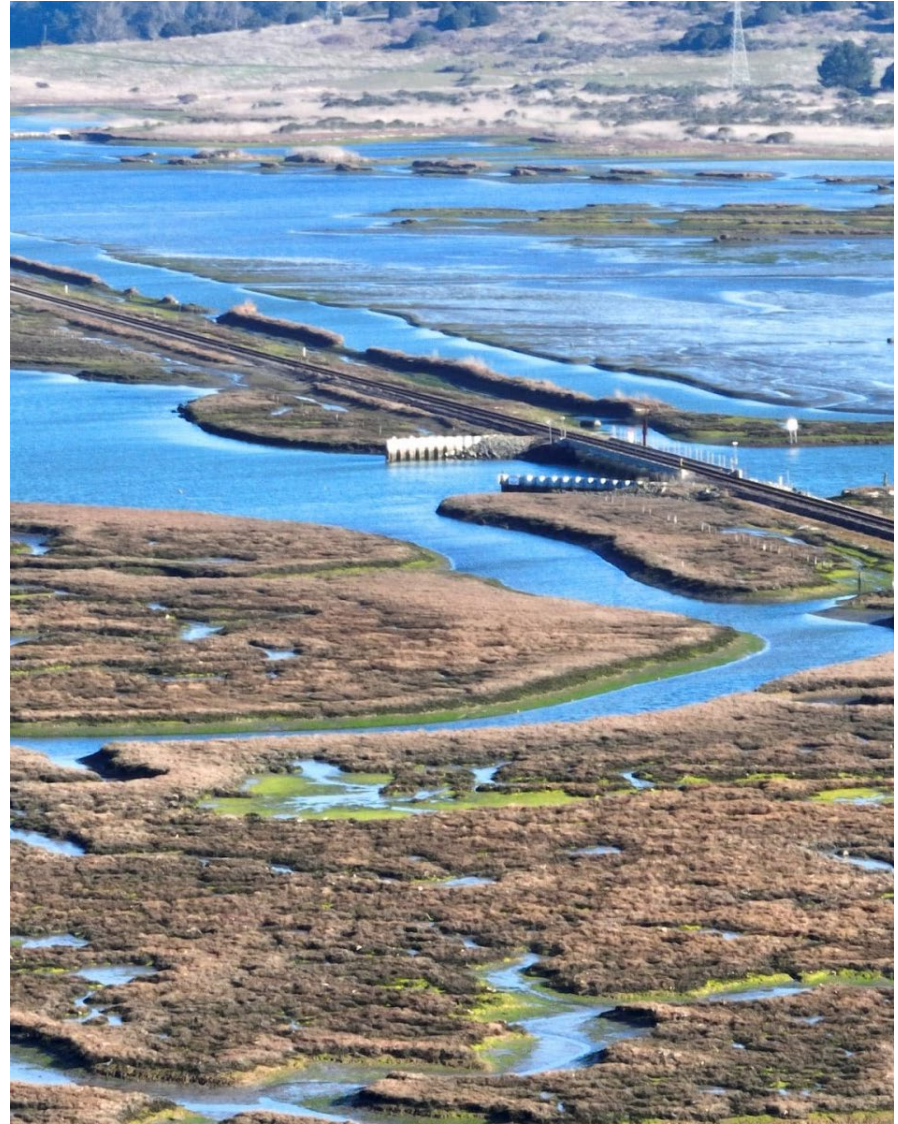
Active Transportation Plan & Level of Traffic Stress

Map of Monterey County with Regional Bicycle Facilities



FY 26/27 Work Program

Highway 1 Elkhorn Slough Climate Resiliency



Summary for Monterey County
Long Range Plan (all dollars in \$1,000s)



	Prior	2021/22	2022/23	2023/24	2024/25	2025/26	2026/27
Row	Env't		Env't			Design	
Transportation Improvement Program	\$ 3,400					\$ 18,603	
Highway Infrastructure Program	\$ 2,594						
Measure X	\$ 640						
Partnership Formula - FY20/21-22/23			\$ 1,949				
Infrastructure Program - FY19/20-20/21			\$ 799				
Station Improvement Program - 2022			\$ 2,087			\$ 4,913	
	\$ 6,634	\$ -	\$ 4,835	\$ -	\$ -	\$ 23,516	\$ -

Boulevard Interchange	Design & ROW		Con				
Transportation Improvement Program	\$ 25,700	-->	\$ 1,975				
Station Improvement Program - CRRSAA		-->	\$ 2,136				
Federal DEMO	\$ 312						
Measure X			\$ 389				
Developer Fees			\$ 5,000				
SB 1 Trade Corridors		-->	\$ 20,000				
	\$ 26,012	\$ -	\$ 29,500	\$ -	\$ -	\$ -	\$ -

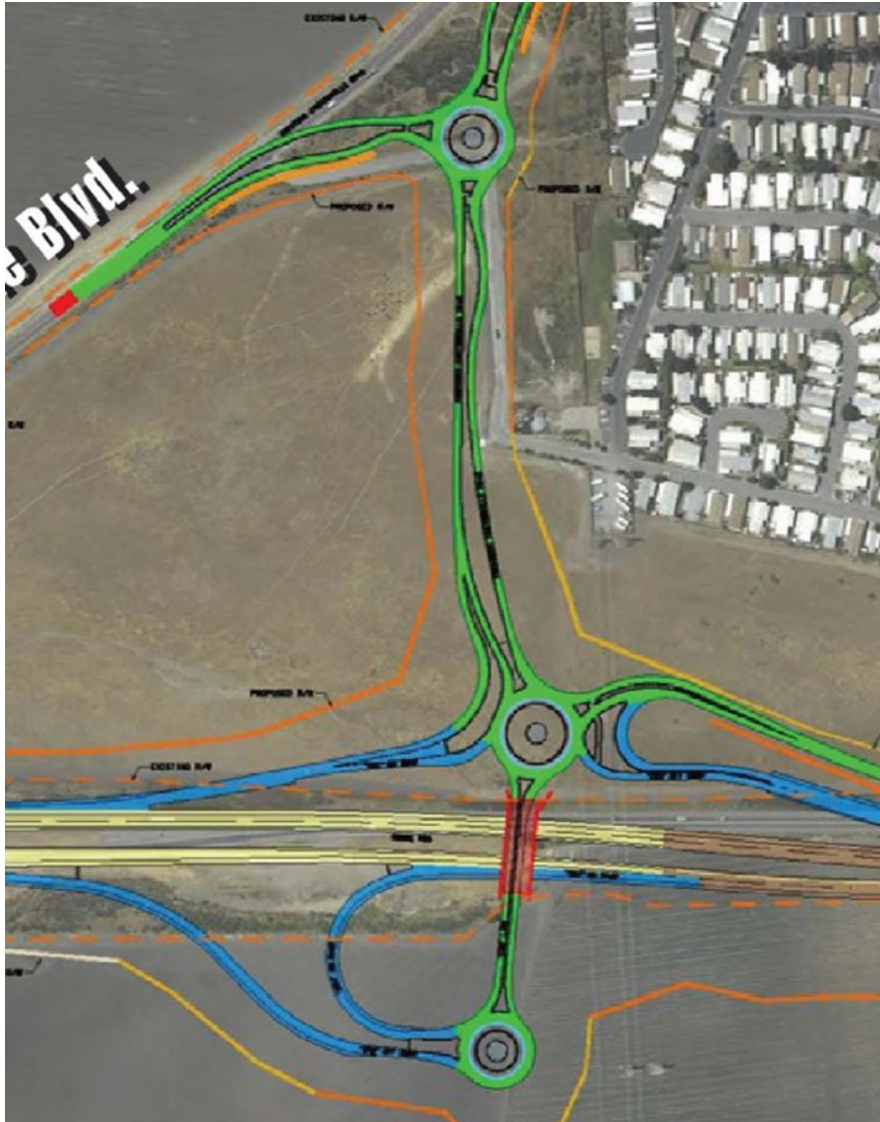
Extension	Env't			Design & ROW		Con	
Measure X				\$ 2,000		\$ 4,000	
Developer Fees	\$ 250						
SB 1 Local Partnership Formula	\$ 250						
	\$ 500	\$ -	\$ -	\$ 2,000	\$ -	\$ 4,000	\$ -

			Con				
SHOPP			\$ 22,600				
Supplemental Appropriations Act			\$ 2,003				
	\$ -	\$ -	\$ 24,603	\$ -	\$ -	\$ -	\$ -

South County	Study	Env't	Env't				
Measure X	\$ 440						
Transportation Improvement Program		\$ 8,611					
Station Improvement Program - 2022			\$ 1,378				
	\$ 440	\$ 8,611	\$ 1,378	\$ -	\$ -	\$ -	\$ -

	Design & ROW	Con					
Measure X		\$ 317					
Federal Earmark		\$ 1,000					

Integrated
Funding
Strategy



Integrated Funding Strategy

State Route 156 /
Castroville



Integrated Funding Strategy

US 101
South of Salinas



Integrated Funding Strategy

Fort Ord Regional
Trail & Greenway



Integrated Funding Strategy

Rail Projects

FY 26/27 - FY 28/29
3-Year Budget

Jeff Kise
Director of Finance & Administration
Presented by Mi Ra Park
Finance Officer

Board of Directors Meeting
May 27, 2026



Fiduciary Funds

TAMC has fiduciary responsibility for the following funds:

- Local Transportation Fund
- 2% TDA for Bike & Pedestrian activity
- State Transit Assistance
- Regional Surface Transportation Program
- Regional Development Impact Fee Agency (JPA)
- Measure X

Not all of the money that runs through TAMC financials from above funds is reflected in the TAMC budget.

Funding Sources

- **Federal**

- Safe Streets 4 All

- **State**

- RPA, PPM (STIP), Planning grants (SB 1 etc.), SAFE, FSP, RSTP, Grants e.g., ATP, Safe Routes to School etc.

- **Local**

- Impact Fees, Measure X

- **Reserves** -SAFE, Rail Leases, Unassigned, Interest

Grants and allocations for a specific purpose cannot be used for another project/program

What makes up the Agency budget?

Operating Budget

- Staff Salaries & Benefits
- Materials & Services
- Capital Outlays

Direct Program Budget

- Contracts, outside consultants and expenses for specific work programs

BUDGET HIGHLIGHTS

- 16.1% growth in overall Planning funds
- 91% of Planner staff time is charged directly to projects/programs; the balance is included in overhead indirect cost allocation
- 3-Year projections (making reasonable estimates & keeping the Board informed on upcoming expenditures)
- Revenues estimated conservatively, expenditures forecasted as accurately as possible.

OPERATING EXPENDITURES ASSUMPTIONS

- Staffing
 - Staff headcount of 19.75 FTE to support the growing list of agency projects
 - Cost of living adjustment of 3.0%
- ERP Software
 - The assessment performed in 2025 demonstrated the need to increase the implementation budget from \$100,000 to \$300,000 and annual cost from \$40,000 to \$60,000
- New TAMC Office
 - \$1,500,000

Revenue Assumptions

Increase

- Monterey County Vision Zero Plan
- Elkhorn Slough Climate Resiliency Study
- Safe Routes to School (Broadway Ave, Alisal, Harden Parkway, John St.)
- FORTAG Construction Management

Decrease

- N. Monterey County Safe Routes to School
- San Antonio Path Safe Routes to School
- Monterey County Regional Transportation Vulnerability Assessment

Revenue Assumptions

- **Ongoing Staff Revenue**
 - Service Authority for Freeways & Emergencies
 - Freeway Service Patrol
 - Monterey Branch Line Leases
 - Measure X Administration & Project/program Management
 - Regional Development Impact Fees
- **Regional Transportation Planning Assessment-remove**
- **Nominal usage of reserves**
- **Unassigned fund balance as of 6/30/24:
\$8,918,500**

Total Revenue by Type

	FY 25-26	FY 26-27	Change
Operating	\$4,527,174	\$5,254,308	16.1%
Direct	\$5,193,296	\$5,726,110	10.3%
TOTAL	\$9,720,470	\$10,980,417	13.0%

Operating Revenue

BUDGETS	FY 25-26	FY 26-27	Change \$	Change %
Federal	\$0	\$109,838	\$109,838	
State	\$2,562,173	\$3,029,772	\$467,599	18.3%
Local	\$1,626,355	\$1,633,382	\$7,027	0.4%
Other Sources	\$557,857	\$350,751	(\$207,106)	(37.1%)
Sub-total	\$4,746,385	\$5,123,744	\$377,359	8.0%
Interest Income	\$292,233	\$197,846	(\$94,387)	(32.3%)
Reserves (surplus)/usage	(\$511,443)	(\$67,282)	\$444,161	(86.8%)
TOTAL	\$4,527,175	\$5,254,308	\$727,133	16.1%

Operating Expenses Capital Budget

	FY 25-26	FY 26-27	FY27-28	FY28-29
Vehicle Replacement	\$45,000	\$0	\$0	\$0
Unfunded Pension Liability	\$1,500,000	\$0	\$0	\$0
TAMC Office	\$50,000	\$1,500,000	\$0	\$0
TOTAL	\$1,595,000	\$1,500,000	\$0	\$0

3-Year Operating Budget Horizon

Fiscal Year	Budget	Change
25-26 (Approved)	\$4,527,174	
26-27 (Forecast)	\$5,254,308	16.1%
27-28 (Forecast)	\$5,339,445	1.6%
28-29 (Forecast)	\$5,557,837	4.1%

Direct Program Revenue

BUDGETS	FY 25-26	FY 26-27	Change \$	Change %
Federal	\$300,000	\$300,000	\$0	0%
State	\$2,407,378	\$3,052,012	\$644,634	26.8%
Local	\$1,360,908	\$1,727,974	\$367,066	27%
RSTP	\$540,299	\$127,910	(\$412,389)	(76.3%)
Unassigned Reserve	\$278,000	\$84,000	(\$194,000)	(69.8%)
FSP & SAFE	\$306,711	434,213	\$142,074	46.3%
TOTAL	\$5,193,296	\$5,726,110	\$532,814	10.3%

Recommended Action

- **APPROVE** Resolution 2026-06 adopting the fiscal year 26/27 budget and estimated budgets for fiscal years 27/28 and 28/29 and the Overall Work Program for FY26/27, and;
- **APPROVE** the 2026 Integrated Funding Strategy.