



# US 101 South of Salinas Access Management Safety Project

Meg Henry, Caltrans Project Manager

TAMC Technical Advisory Committee Meeting  
April 3, 2025



# Overview of Upcoming Caltrans Safety Project in SOS Corridor

---

- Existing safety issues
- Safety project details
- Relationship of safety project to long-term SOS corridor improvement project
- Other mid-term solutions
- Safety project schedule

# Overview of Upcoming Caltrans Safety Project in SOS Corridor

---

- Existing safety issues
- Safety project details
- Relationship of safety project to long-term SOS corridor improvement project
- Other mid-term solutions
- Safety project schedule

## Double fatal crash near Salinas on Highway 101

Share



KSBW ACTION NEWS 8

Updated: 5:20 PM PDT Aug 1, 2017



Highway 101 fatal crash SOURCE: KSBW

## 3 children airlifted after big rig made an illegal U-turn on Highway 101: CHP

Share



KSBW ACTION NEWS 8

Updated: 7:21 PM PDT Mar 21, 2022



# SAFETY CONCERN

## Fatal Salinas Crash Highway 101 and Spence Road

Home > Catastrophic Injury > Fatal Salinas Crash Highway 101 and Spence Road



### 2-Vehicle Crash on Highway 101 in Spence

SPENCE, Calif. (Jan. 22, 2024) – A fatal crash involving two vehicles happened Monday morning on the Highway 101 at Spence Road.

News FOLLOW 32 Followers

## Child ejected in two car crash south of Salinas

By KION546 News Team FOLLOW

Published August 16, 2018 10:26 AM



UPDATE: 8/16/2018 8:23 a.m. A 3-year-old boy was ejected from a vehicle in a two car crash just south of Salinas.

According to the California Highway Patrol, a Ford F-150 truck was attempting to make a left turn on Highway 101 near Spence Road when a delivery truck going north struck it. The F-

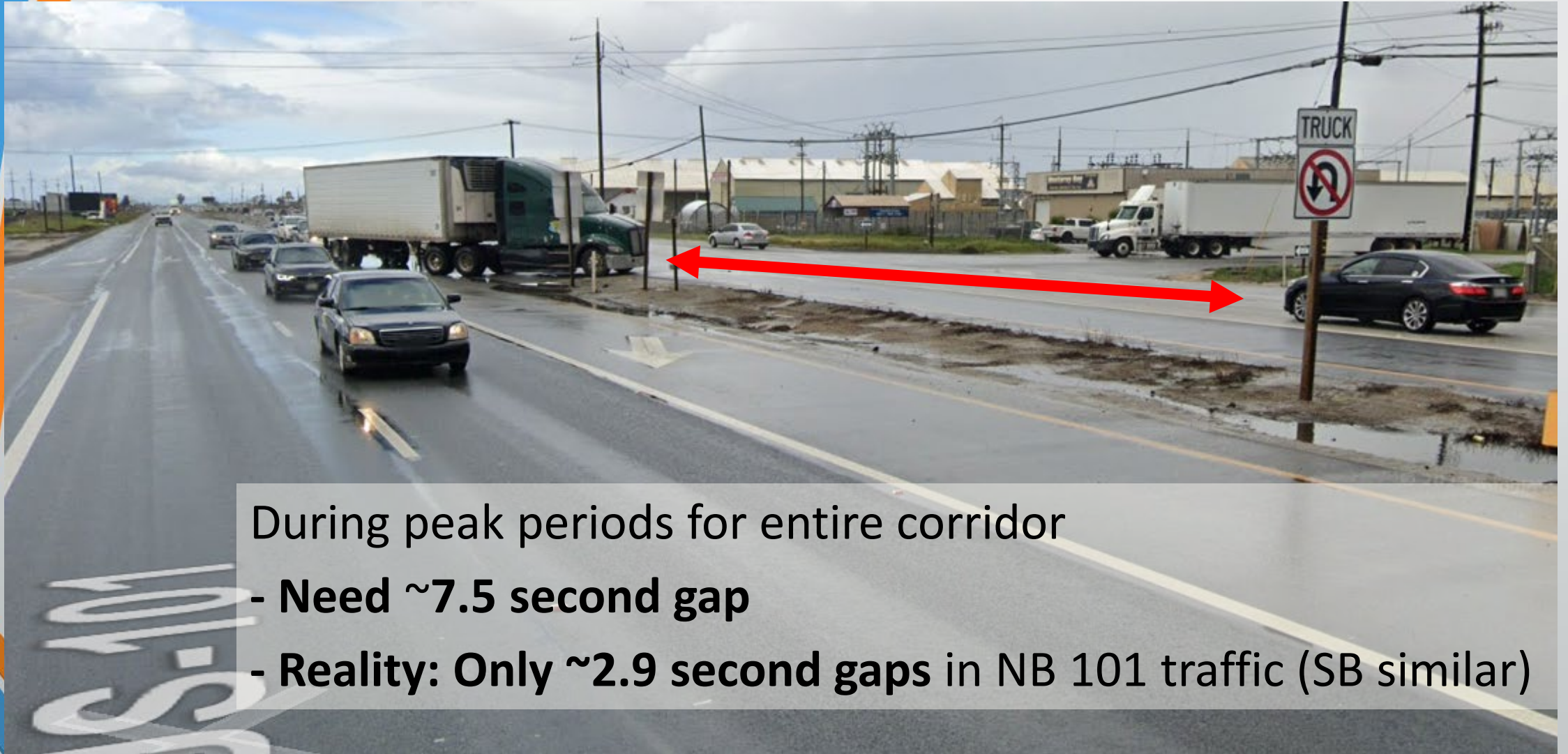


25 mph

75 mph

The Issue: Left turns and U-Turns

# The Issue: Left turns and U-Turns



During peak periods for entire corridor

- **Need ~7.5 second gap**

- **Reality: Only ~2.9 second gaps in NB 101 traffic (SB similar)**



# Prevent left turns and U-Turns

---

- Reduces **75% of serious injury** collisions (average 13 injuries per year)
- Reduces **100% of fatal** collisions (average 1 death per year)
- Annual safety benefit almost \$16M/year

# Overview of Upcoming Caltrans Safety Project in SOS Corridor

---

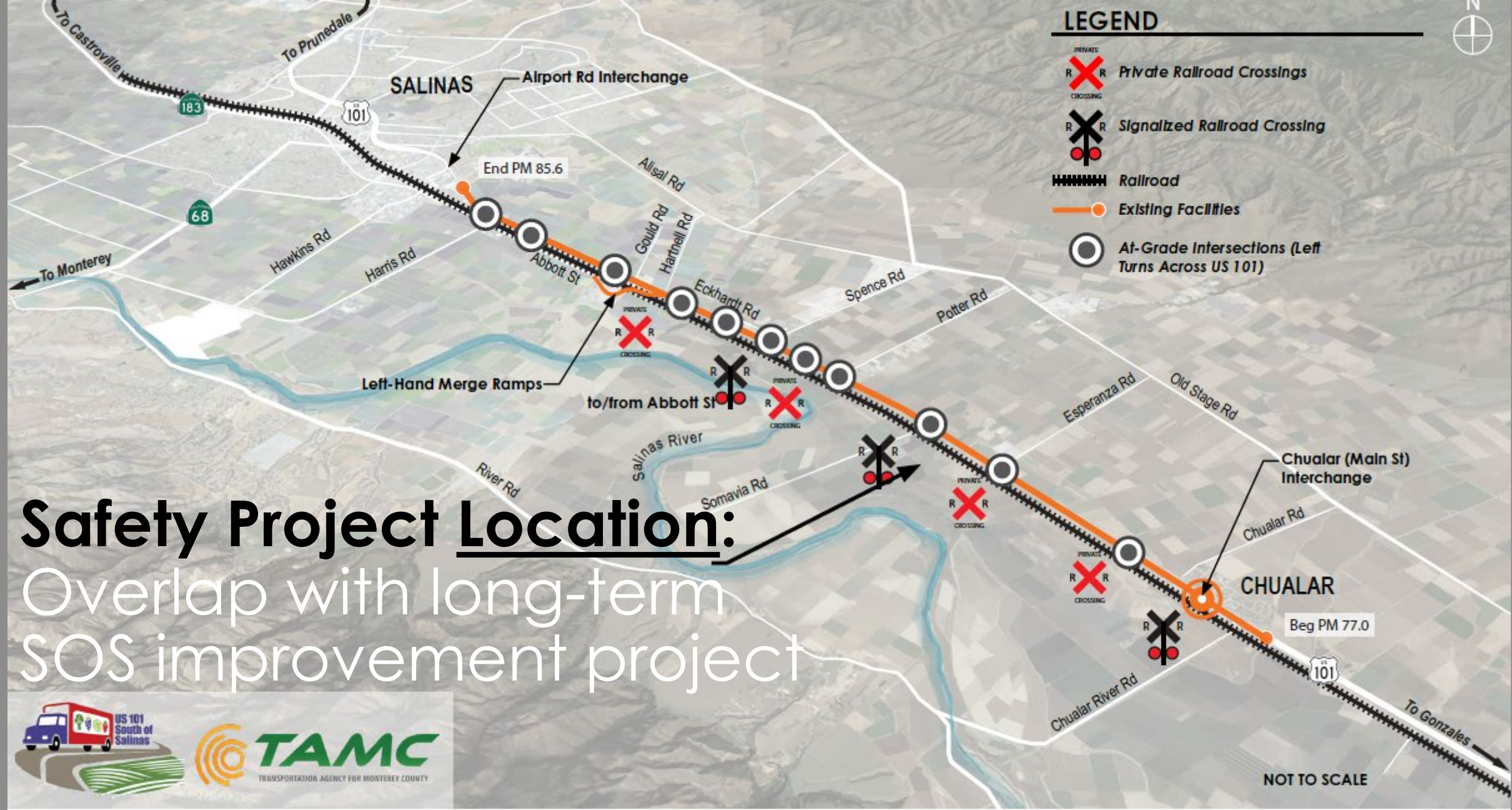
- Existing safety issues
- Safety project details
- Relationship of safety project to long-term SOS corridor improvement project
- Other mid-term solutions
- Safety project schedule

# Safety Project Location:

Overlap with long-term SOS improvement project

### LEGEND

- Private Railroad Crossings
- Signalized Railroad Crossing
- Railroad
- Existing Facilities
- At-Grade Intersections (Left Turns Across US 101)





# Safety Project Details

---

- Close all 11 median openings between Chualar and Salinas
  - This will preclude all left turn movements onto and off of US 101, and all U-turns
- Leave 2 openings for emergency vehicle access
- Stop control changes at Chualar SB Ramp

# Safety Project Details

Median  
barrier  
example



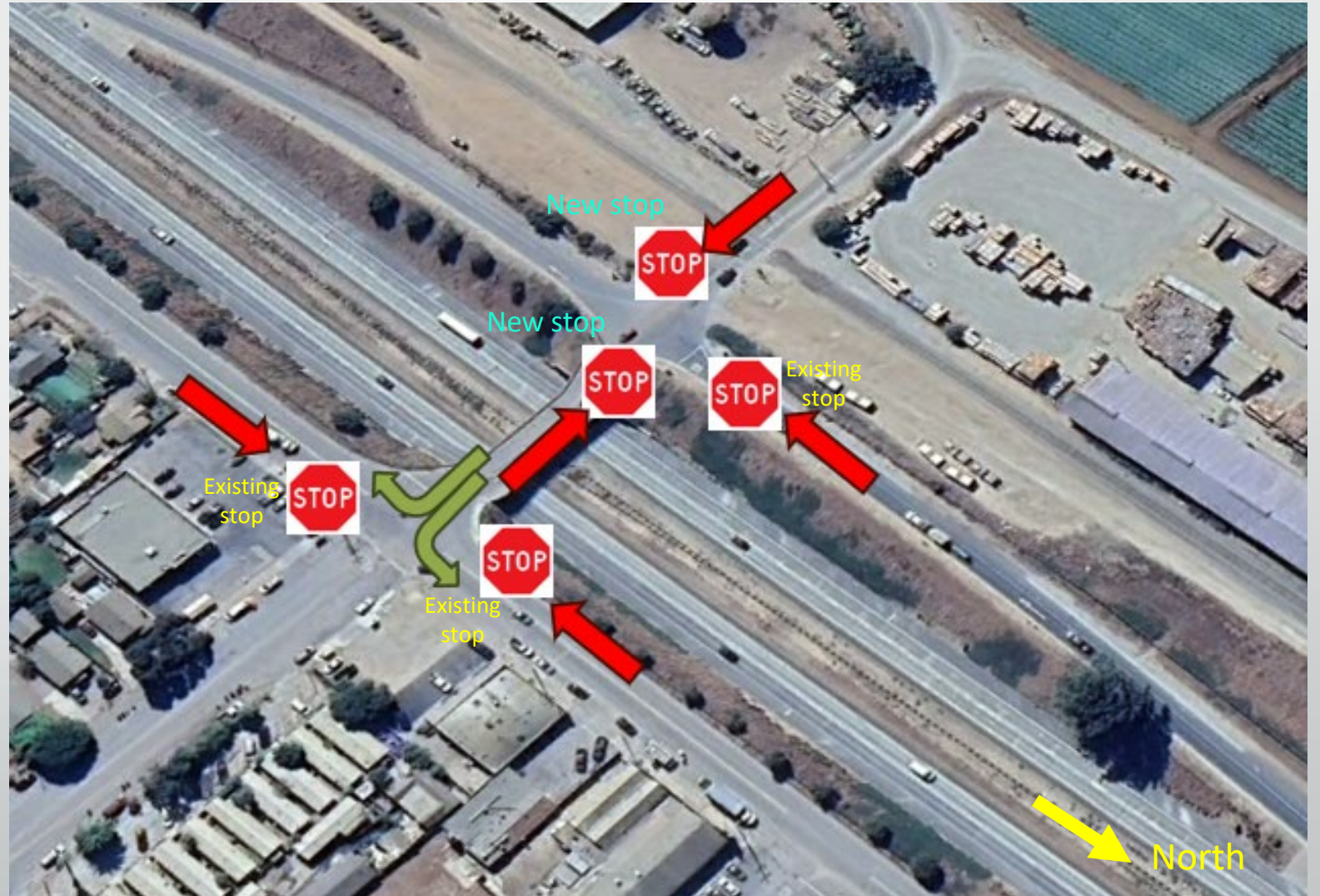
# Safety Project Details

Emergency  
opening  
example



# Safety Project Details

Stop control  
change in  
at Chualar  
SB off ramp




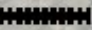




# Overview of upcoming Caltrans Safety Project in SOS Corridor

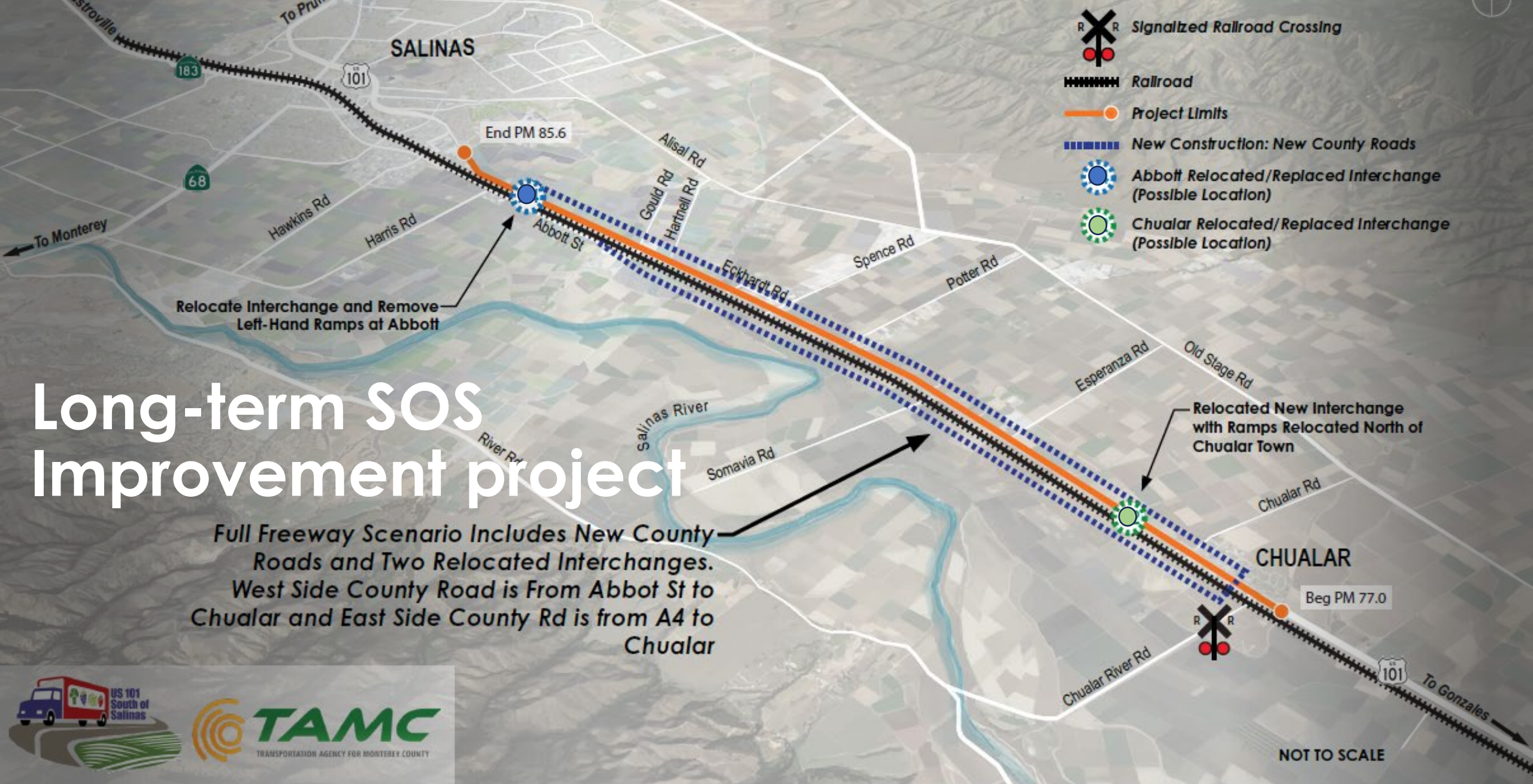
---

- Existing safety issues
- Safety project details
- Relationship of safety project to long-term SOS corridor improvement project
- Other mid-term solutions
- Safety project schedule

# Long-term SOS Improvement project

Full Freeway Scenario Includes New County Roads and Two Relocated Interchanges. West Side County Road is From Abbot St to Chualar and East Side County Rd is from A4 to Chualar

-  Signalized Railroad Crossing
-  Railroad
-  Project Limits
-  New Construction: New County Roads
-  Abbott Relocated/Replaced Interchange (Possible Location)
-  Chualar Relocated/Replaced Interchange (Possible Location)



NOT TO SCALE



# Overview of upcoming Caltrans Safety Project in SOS Corridor

---

- Existing safety issues
- Safety project details
- Relationship of safety project to long-term SOS corridor improvement project
- Other mid-term solutions
- Safety project schedule



# Potential Mid-Term Improvements

Caltrans and TAMC will be evaluating:

- Installation of roundabouts at key locations to assist with turning movements
- Alternatives to improve traffic circulation at existing interchange intersections
- Chualar bridge rail improvements
- Other complete streets improvements

# Overview of upcoming Caltrans Safety Project in SOS Corridor

---

- Existing safety issues
- Safety project details
- Relationship of safety project to long-term SOS corridor improvement project
- Other mid-term solutions
- Safety project schedule



# Delivery Schedule

- **January 2025**: CTC approves safety project (*completed*)
- **Feb 2025 to March 2026**: Design
- **April 2026** – Contract awarded
- **Late June/July 2026** – Approximate construction start, with full left turn closure
- **Late 2026/Early 2027** – Construction complete
- **Late Summer/Fall 2031** – Anticipated start of phased construction for long-term corridor improvement project

*Now that the safety project is started, what's next?*

Public messaging for the upcoming closure

Starting in late 2025 into early 2026



# Questions

---

Meg Henry

Caltrans District 5

Project Manager

[Meg.henry@dot.ca.gov](mailto:Meg.henry@dot.ca.gov)

805-441-3792

