



Welcome Chualar Sidewalk Community Project

Project Manager: Maribel Ramos-Peredia
Phone: (831) 755-4589
ramos-perediam@countyofmonterey.gov



Geography

- Chualar is an unincorporated community located in Salinas Valley just south of Salinas.
- The community lies adjacent to U.S. Highway 101, a major north–south transportation corridor that connects Chualar to nearby cities and regional destinations.
- The community lies on a flat alluvial plain shaped by the Salinas River, supporting agriculture and creating favorable conditions for walking and bicycling.
- *While Chualar’s geography naturally supports low impact walking and bicycling, the existing transportation network does not yet fully reflect these conditions.*



These pictures of
Grant Street in
Chualar are 103
years apart!









Active Transportation Program (ATP)



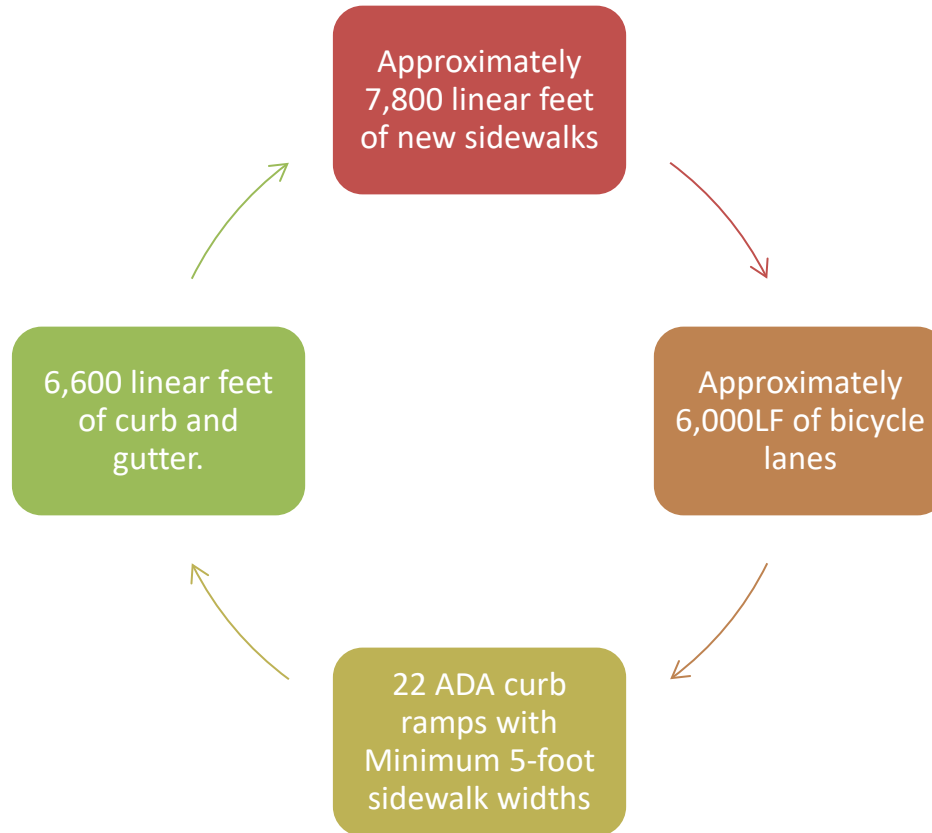
Sidewalk
Gaps

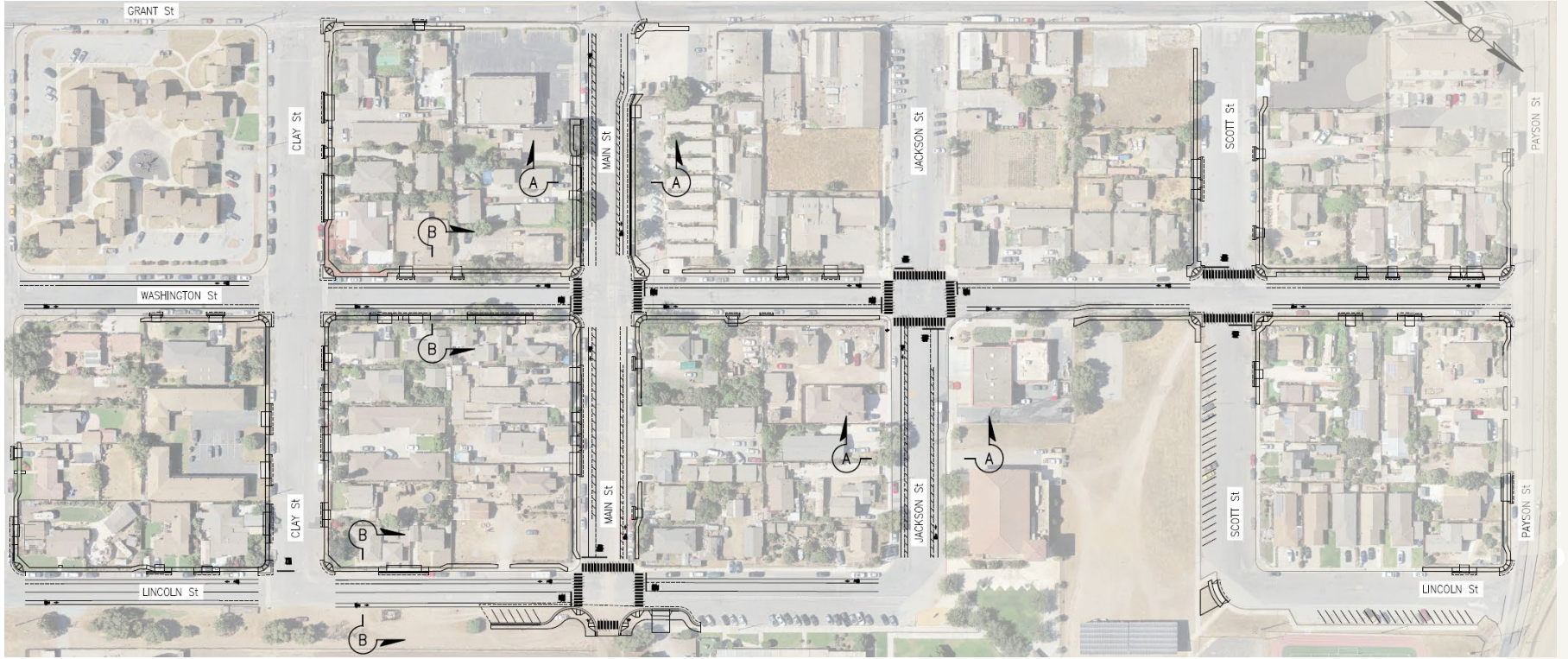
Bicycle
Lanes

ADA
accessibility

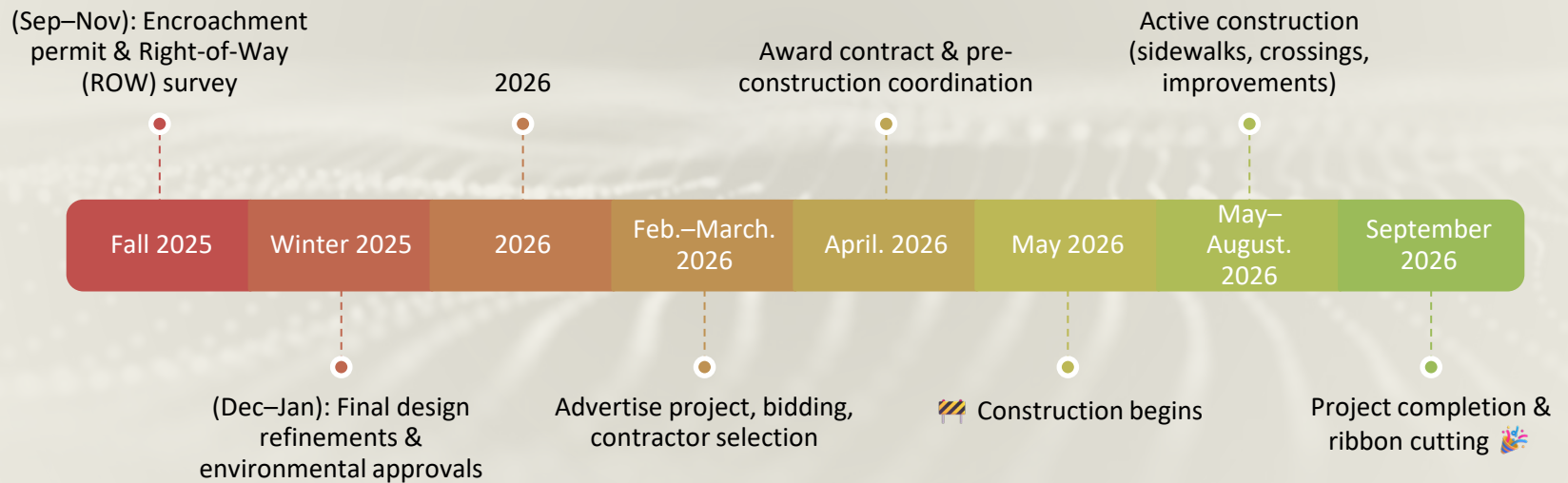


Project Facts





Project Timeline






Benefits

Pedestrian Safety

Encourages walking, reduces traffic

Supports equity, mobility, and community health

Safer routes for kids walking to school



Maribel Ramos-Peredia
Assistant Engineer
Department of Public Works, Facilities and Parks
ramos-perediam@countyofmonterey.gov