

December 12, 2019

# Fort Ord Regional Trail and Greenway Environmental Impact Report

Draft EIR Public Meeting

# Introductions



# Project Team



- Rich Deal – Transportation Agency for Monterey County (Lead Agency)
- Stefania Castillo – Transportation Agency for Monterey County
- Greg Maher – Alta Planning + Design
- Megan Jones – Rincon Consultants
- Kate Giberson – Harris & Associates
- Kari Zajac – Rincon Consultants

# Meeting Outline



- Project Overview
- Environmental Review Process
- Summary of Draft EIR
- Public Comments on Draft EIR
- Open House Forum
  - Questions & Answers
  - Formal Comment



# Project Overview

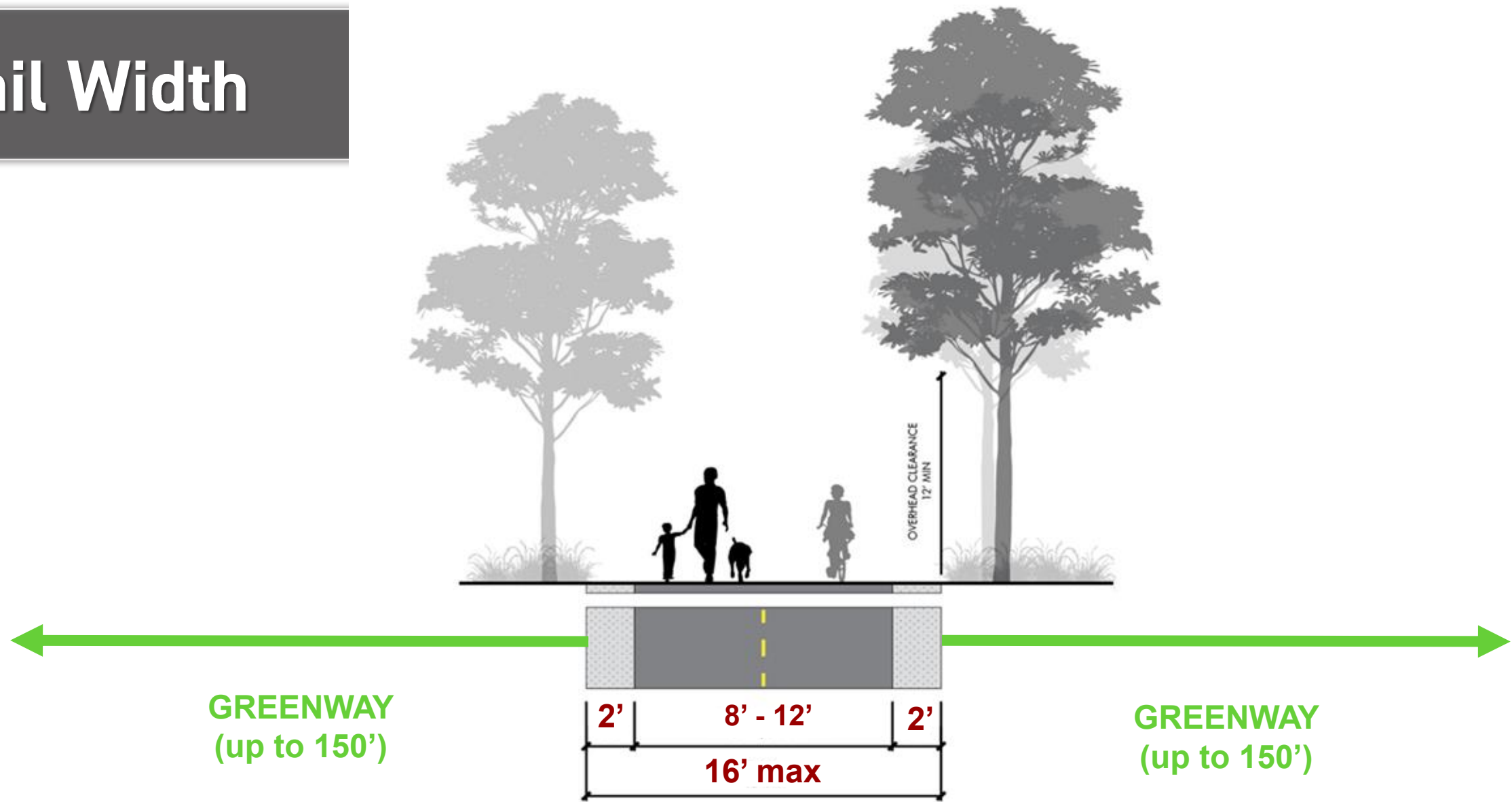


# Project Vision

- 28-mile multi-use trail
  - Safe, accessible, and separated alternative to cars
  - Connect people to open space and recreation
  - Enhance connections between communities
  - Function as habitat corridor
  - Complement the built environment



# Trail Width



# Environmental Review Process



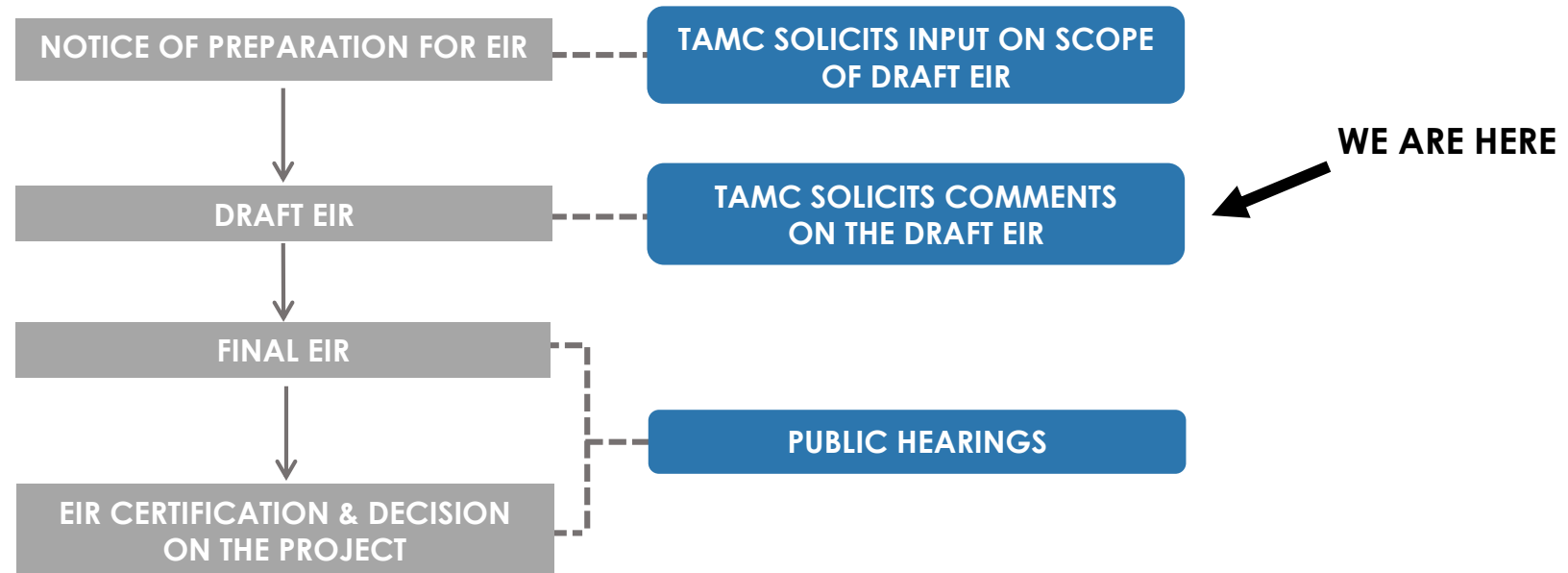


# Purpose and Requirements



- CEQA = California Environmental Quality Act
- Inform decision making
- Disclose potentially significant environmental impacts
- Identify mitigation measures
- Consider alternatives
- Foster public participation and interagency coordination

# The EIR Process



# Purpose of Today's Meeting



- CEQA process overview
- Summarize Draft EIR findings
- Accept comments
  - Environmental issues
  - EIR adequacy



# Summary of Draft EIR



# Issue Areas Analyzed

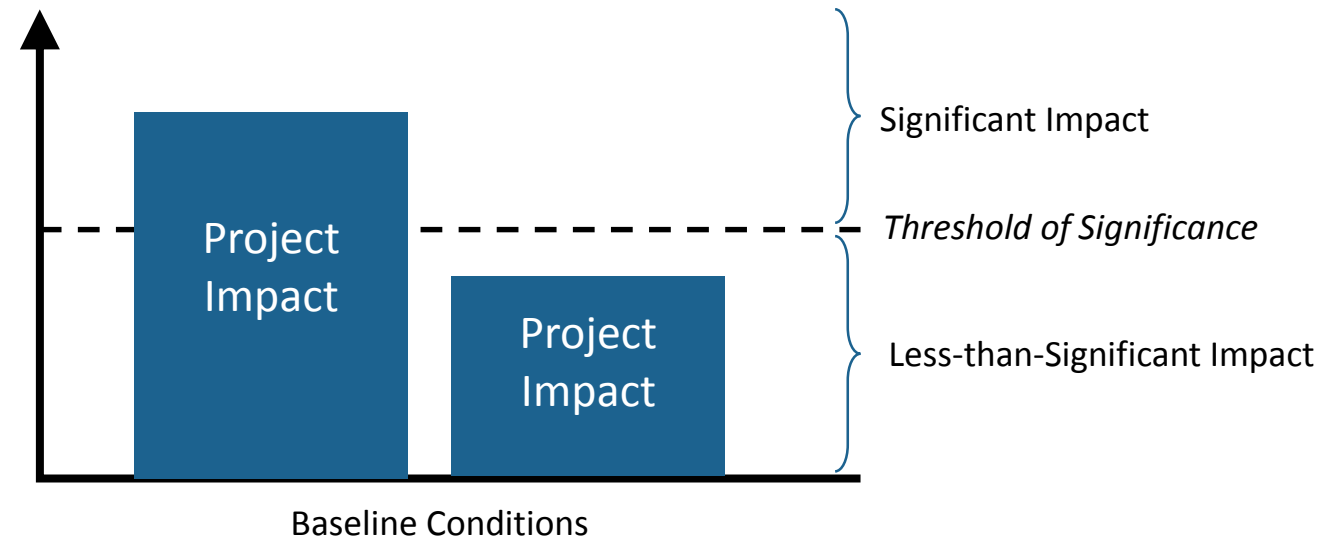


- Aesthetics
- Agricultural Resources
- Air Quality
- Biological Resources
- Cultural Resources
- Energy
- Geology and Soils
- Greenhouse Gas Emissions
- Hazards & Hazardous Materials
- Hydrology & Water Quality
- Land Use & Planning
- Noise
- Public Safety & Services
- Recreation
- Traffic
- Tribal Cultural Resources
- Utilities & Service Systems
- Wildfire

# Environmental Impact Analysis



- Impacts identified per CEQA Guidelines and regulations
- Mitigation measure(s) avoid or reduce impacts to below thresholds
- Impact determinations:
  - Less than significant
  - Less than significant with mitigation
  - Significant and unavoidable



# Summary of Project Impacts



- Draft EIR Table ES-1
- 63 impacts identified
  - 38 less than significant
  - 25 less than significant with mitigation
  - 0 significant and unavoidable



# Key Resource Topics



- Aesthetics
- Agricultural Resources
- Biological Resources
- Cultural Resources
- Hazards & Hazardous Materials
- Public Safety & Services





# Aesthetics



- Scenic vistas, visual character, and night lighting
  - Structure design
  - Amenity design
  - Dark sky-compliant lighting



# Agricultural Resources



- Farmland and agricultural conflicts
  - Land conservation
  - Reduce construction-related conflicts
  - Fencing and signage
  - Solid waste and litter removal



# Biological Resources



- Special status species
  - Pre-construction surveys
  - Avoidance, minimization, and mitigation
  - Habitat mitigation and monitoring plan
  - Compensatory mitigation
  - Worker environmental awareness program
  - Biological monitoring
- Sensitive habitat
  - Avoidance
  - Mitigation and monitoring plan
  - Construction best management practices
  - Invasive weed prevention and management

# Biological Resources



## ■ Wetlands

- Jurisdictional Delineation
- Restoration
- General avoidance and minimization



# Cultural Resources



- Archaeological resources
  - Construction monitoring



# Hazards & Hazardous Materials



- Soil contaminants
  - Soil sampling and remediation
  - Soils management plan
- Airport hazards
  - Noticing/signage
  - Fencing



# Public Safety & Services



- Calls for police protection
  - Safety provisions determined by law enforcement
  - Safety patrols
  - Protocols for illegal camping
  - Monitoring and reporting
  - Adaptive management
- Solid waste
  - Litter removal



# Alternatives



## Evaluated in EIR

1. No Project
2. Increase Use of Existing Roadways
3. Substitute Crossings
4. Frog Pond Wetland Preserve  
Northerly Alignment

## Rejected from Further Consideration

- SR 218 Alternative
- SR 218 Overcrossing
- Widening South Boundary Road
- Bicycles Excluded in Frog Pond



# Alternatives Evaluated in EIR



1. No Project

No new trail



2. Increase Use of Existing Roadways

Follow existing roads. No trail through Del Rey Oaks, Frog Pond, or to Ryan Ranch



3. Substitute Crossings

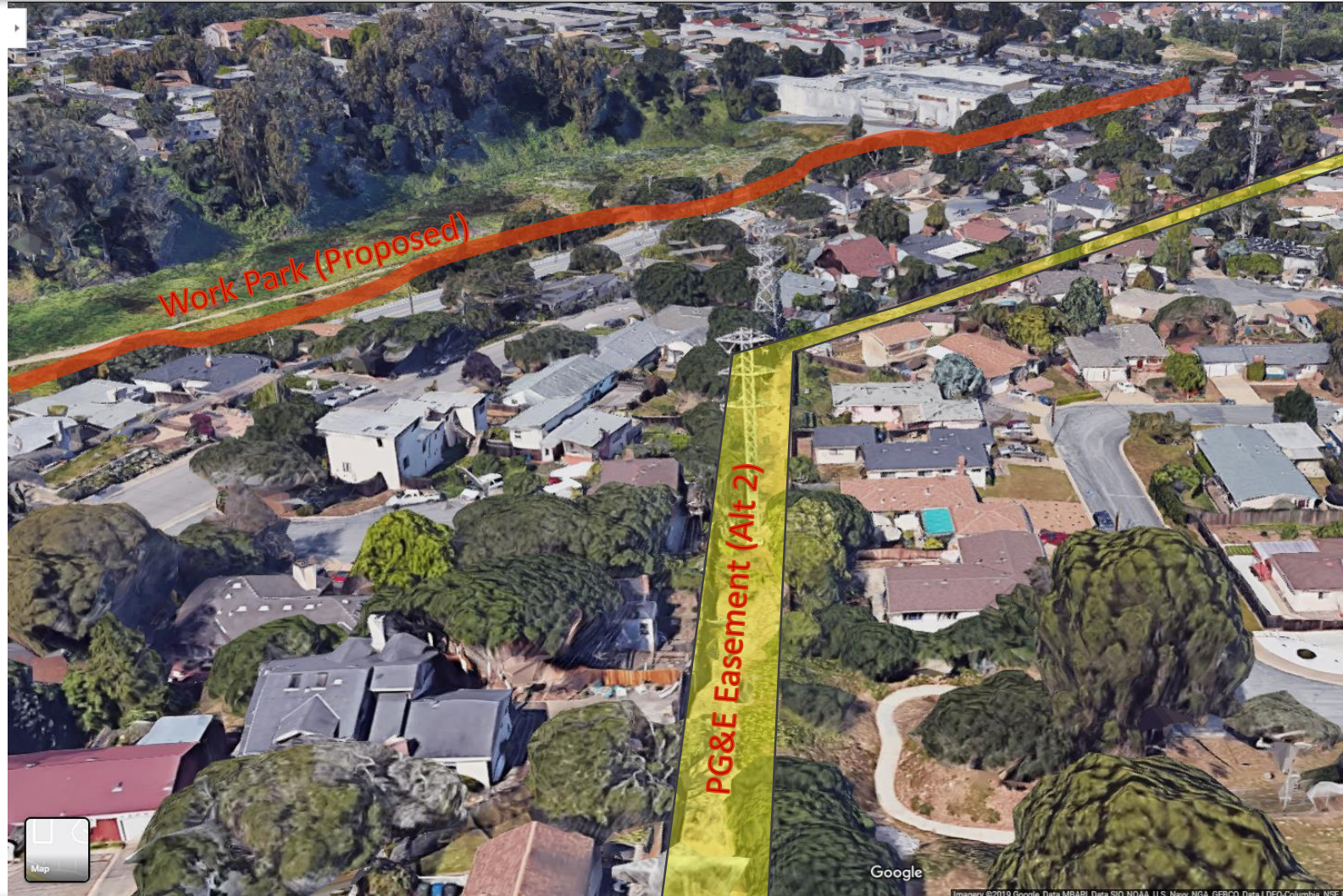
No overcrossings, alternative South Boundary Road crossing



4. Frog Pond Wetland Preserve Northerly Alignment

Realigned to follow existing trail in northern portion of preserve

# 2. Increased Use of Existing Roadways



# 4. Frog Pond Wetland Preserve Northernly Alignment



# Alternatives Considered but Rejected



SR 218 Alternative

Safety risks, lose ATP funding, would not meet objectives



SR 218 Overcrossing

Footprint would encroach into Frog Pond, extensive grading, utility conflicts



Widening South Boundary Road

Realignment of roadway with similar trail already planned, would not meet objectives



Bicycles Excluded in Frog Pond

Would not meet project objectives, safety risks for bicyclists

# Alternative Comparison



1. No Project

Environmentally Superior

Reduced impact for all issues, would not meet objectives



2. Increase Use of Existing Roadways

Reduced impact for most issues, meets most objectives



3. Substitute Crossings

Impacts comparable to project



4. Frog Pond Wetland Preserve Northerly Alignment

Reduced biological impacts at Frog Pond

# Next Steps



- Deadline for comments on Draft EIR: January 3, 2020
- Final EIR (Response to Comments): Spring 2020
- Certification of Final EIR: Spring 2020
- Decision on Project: Spring 2020



# Public Comments



- Focus: Environmental issues and EIR adequacy
- Submit written comments to:
  - Transportation Agency for Monterey County
  - 55 B Plaza Circle
  - Salinas, California 93901
  - Attn: Rich Deal, PE, TE, PTOE
  - [rich@tamcmonterey.org](mailto:rich@tamcmonterey.org)
- Deadline: Friday, January 3, 2020 @ 5:00 PM

# Open House Forum

Questions and Answers  
Formal Comment





# Backup Slides





# Northern Marina Segment

*Alternative at-grade crossing for proposed bridge*

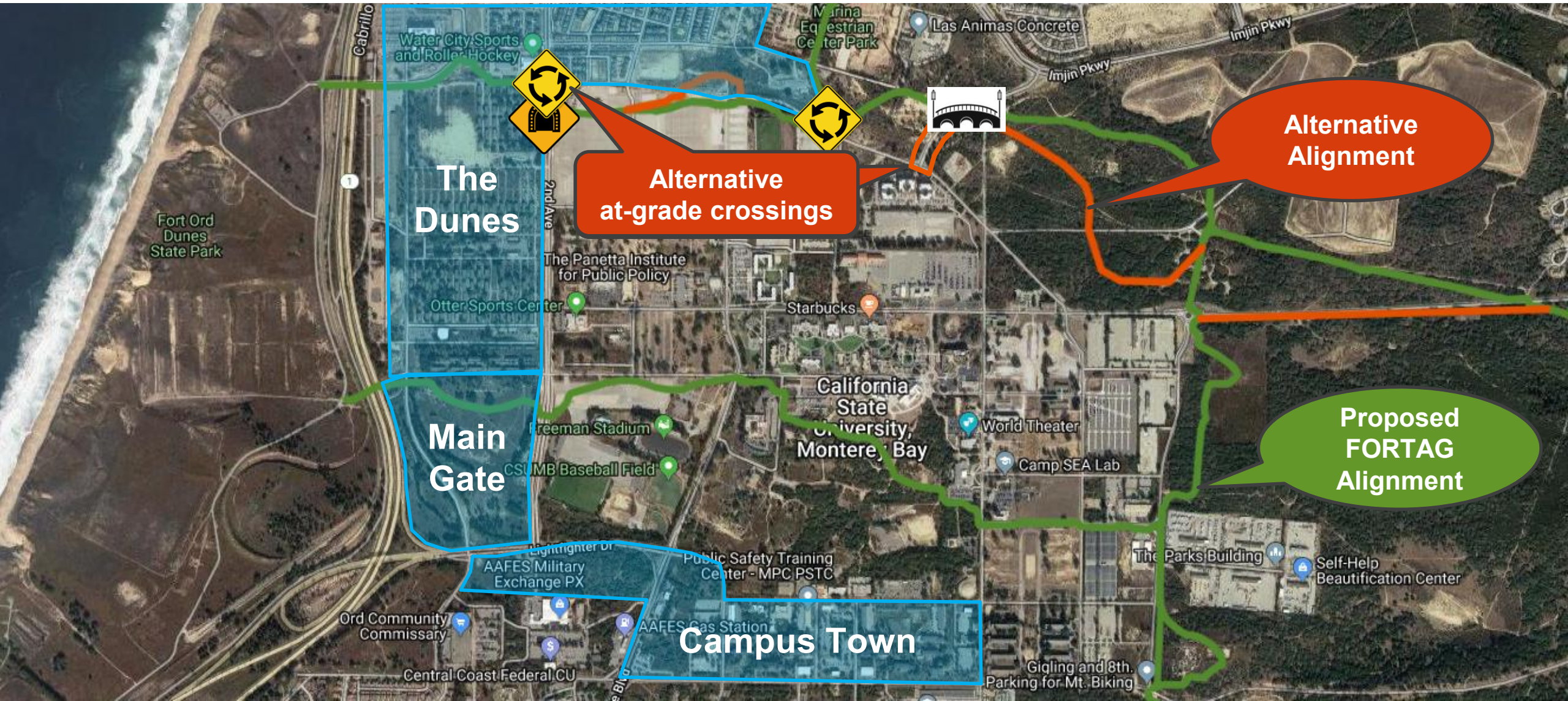
*No objects are proposed along the trail within Airport Safety Zones*

*Connection to future development*

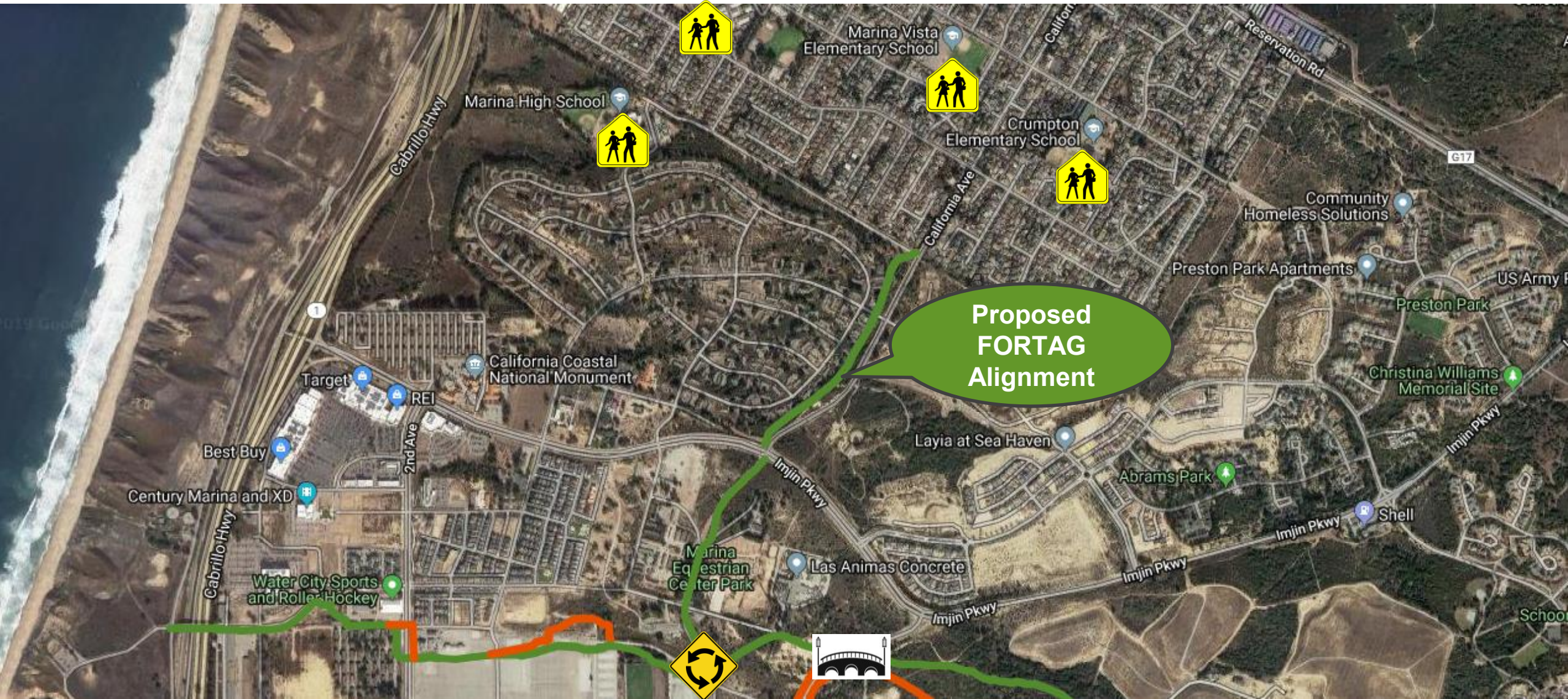
# Reservation Rd and Inter-Garrison



# Cal State University Monterey Bay (CSUMB)

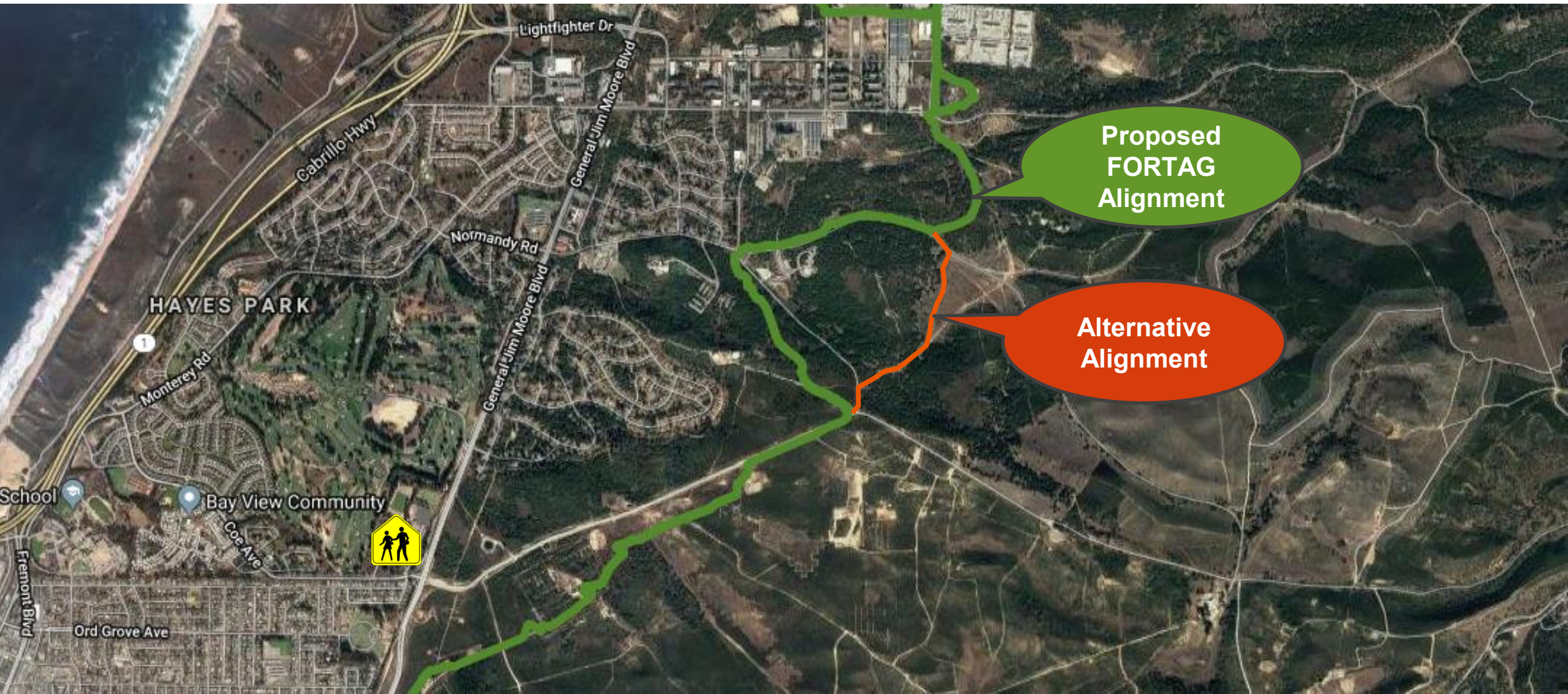


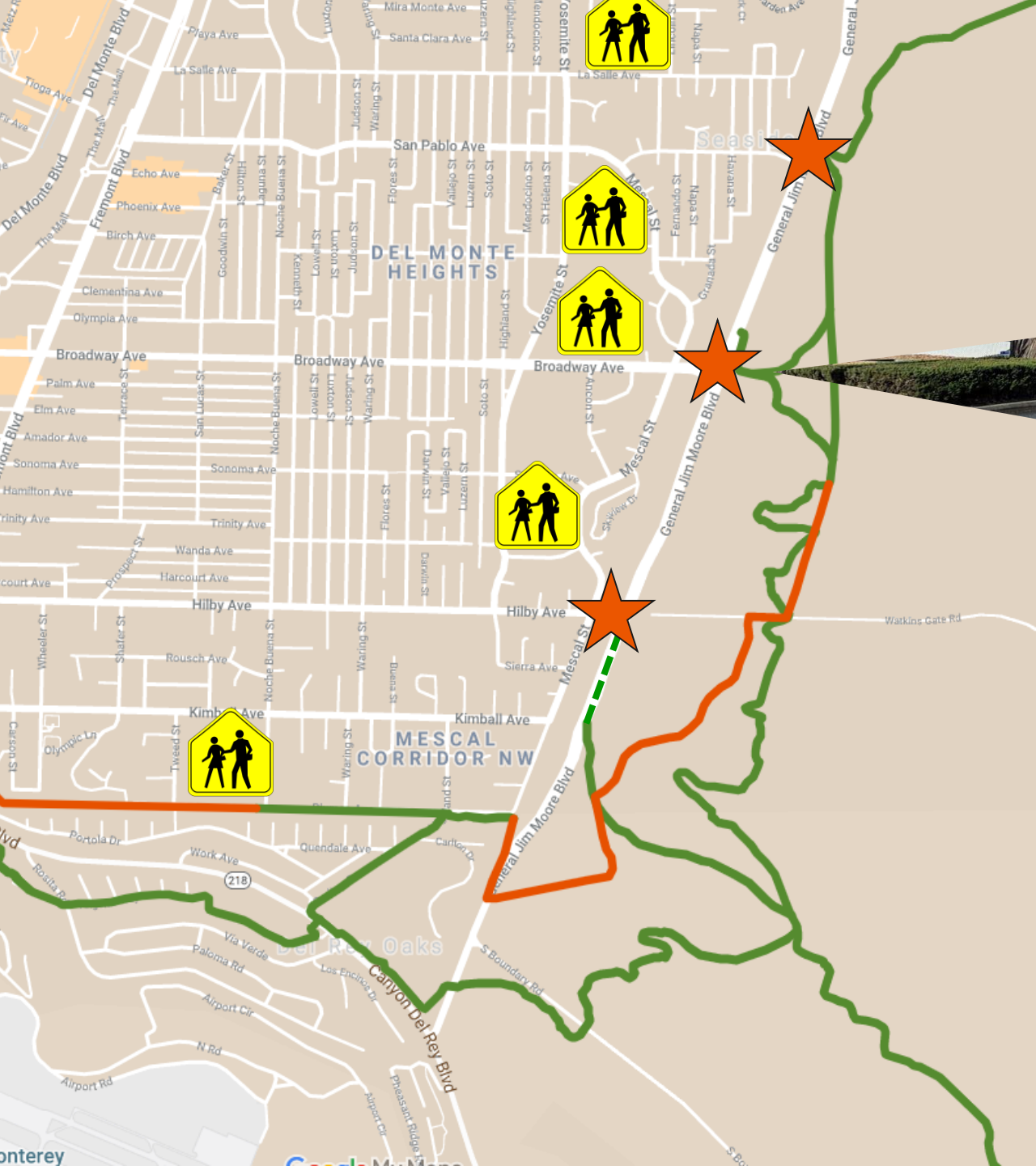
# CSUMB - Marina Neighborhood Connection



# National Monument Segment

---



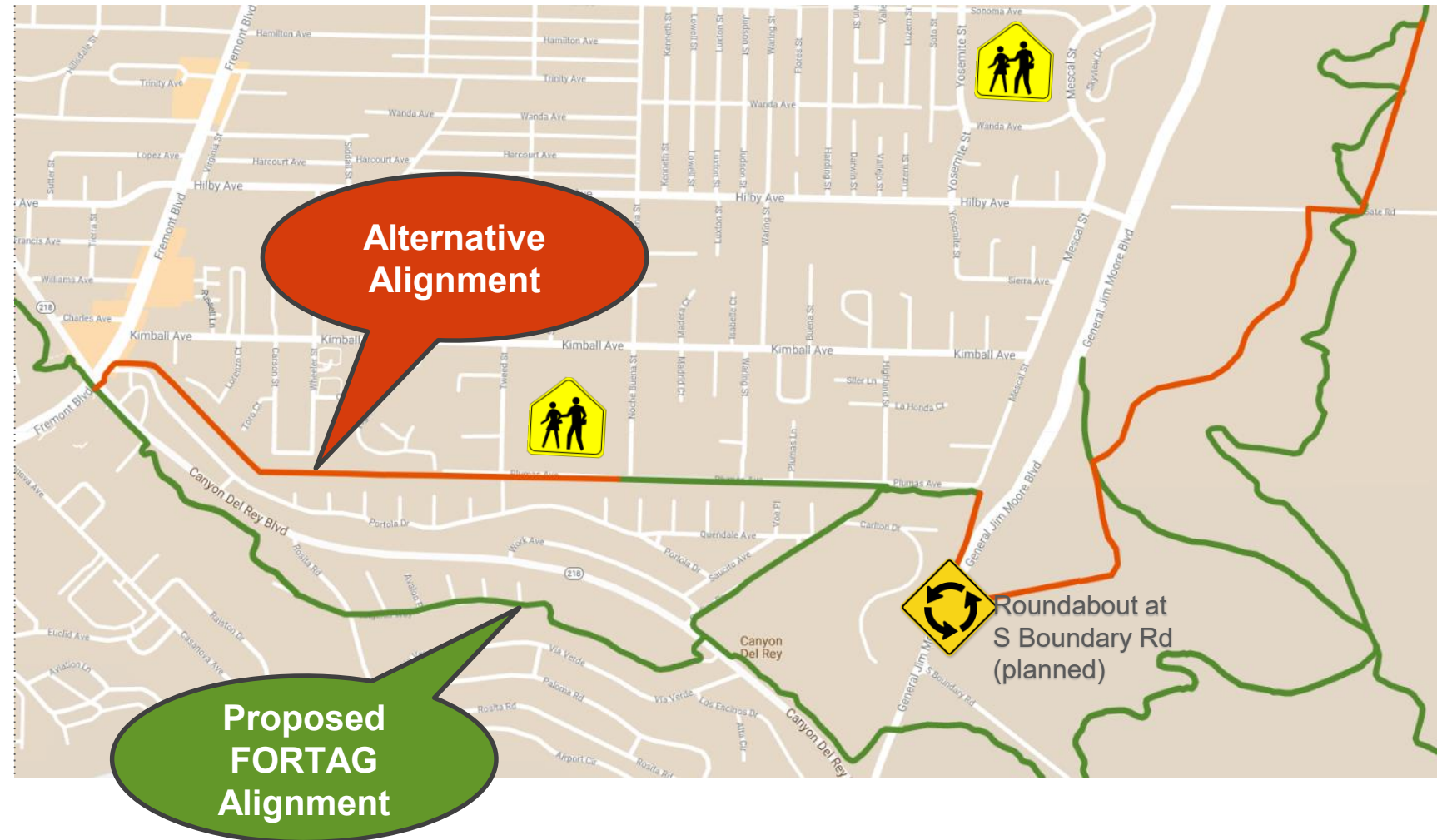


## Connections to:

- 01 | Hilby Avenue
- 02 | Broadway Avenue
- 03 | San Pablo Avenue

# Alternative Alignment to Angelus Way Plumas Ave (PG&E Easement)

- *PG&E easement - recapture backyard right-of-way*
- *Tunnel effect behind Plumas Ave homes vs. user safety*
- *Missed opportunity to connect parks*





Work Park Proposed

PG&E Easement Alternative

Map

Google

# Frog Pond Northern Alignment Alternative

- Avoids impacts to wetland
- Opportunities for removal of invasive plants and restoration of habitat
- Better separation of bike trail from walking path



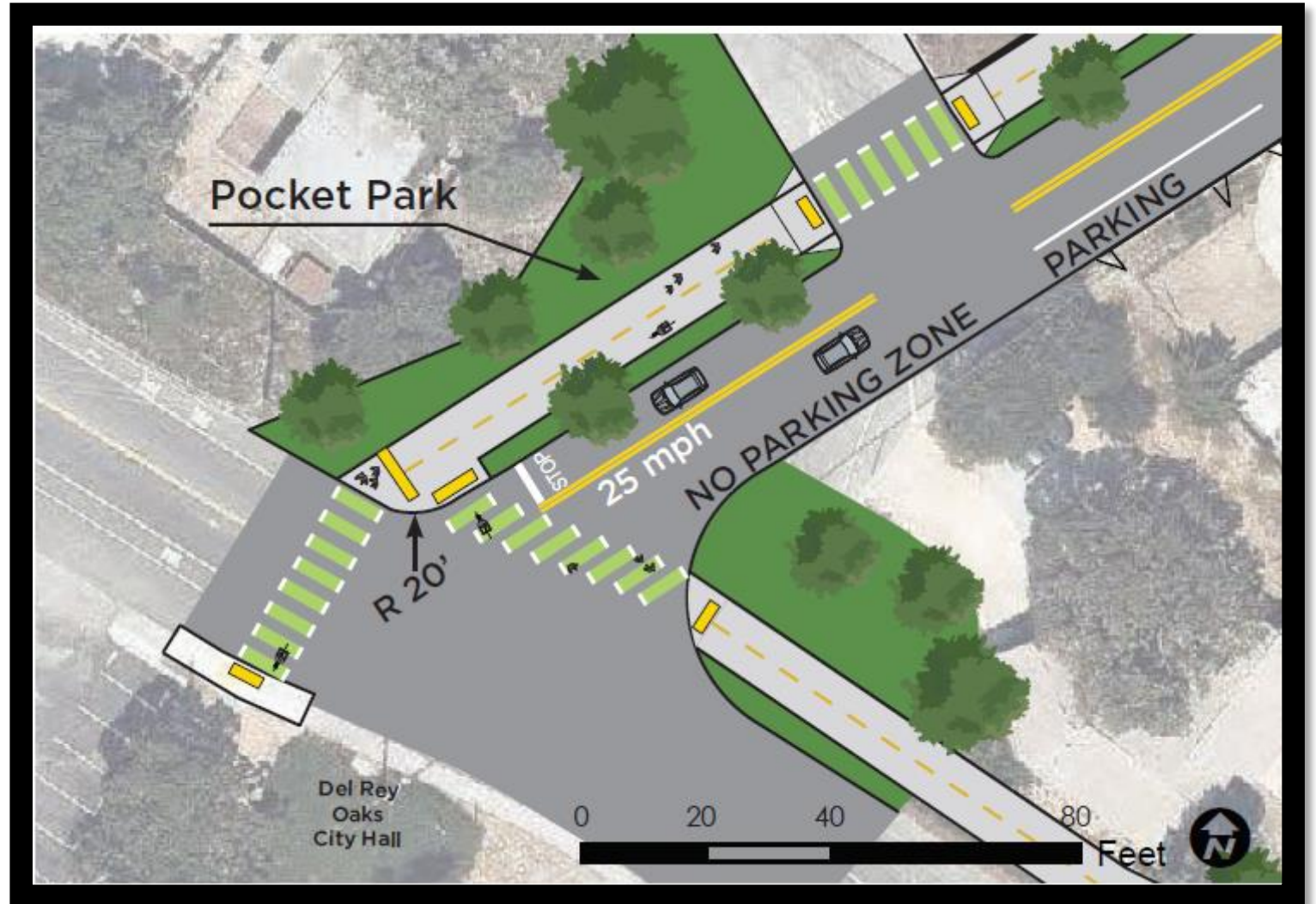
Bike/Ped  
(proposed)

Undercrossing

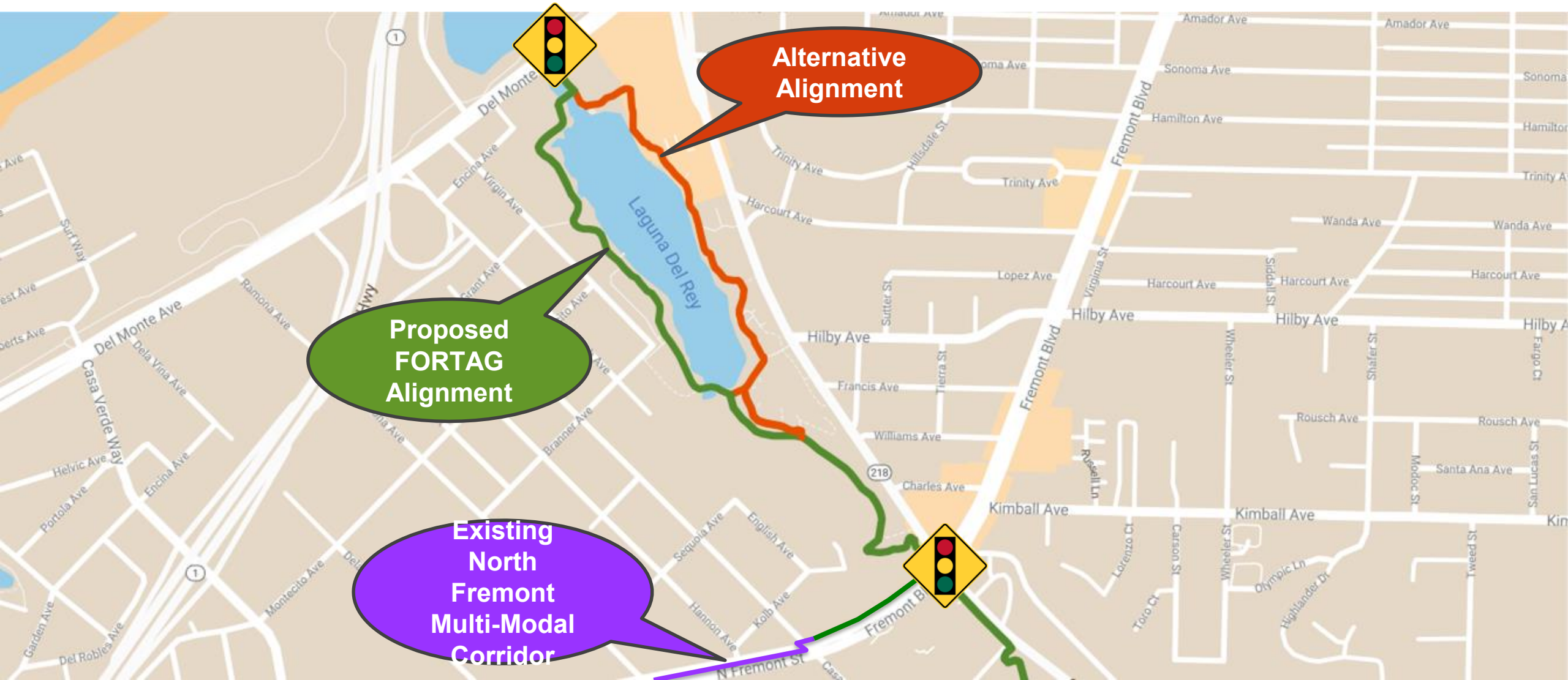


# At-Grade Crossing Alternative to Tunnel Carlton Drive / SR 218

- Eliminates tunnel
- Requires crosswalk warning system
- Traffic signal not warranted



# Laguna Grande Regional Park

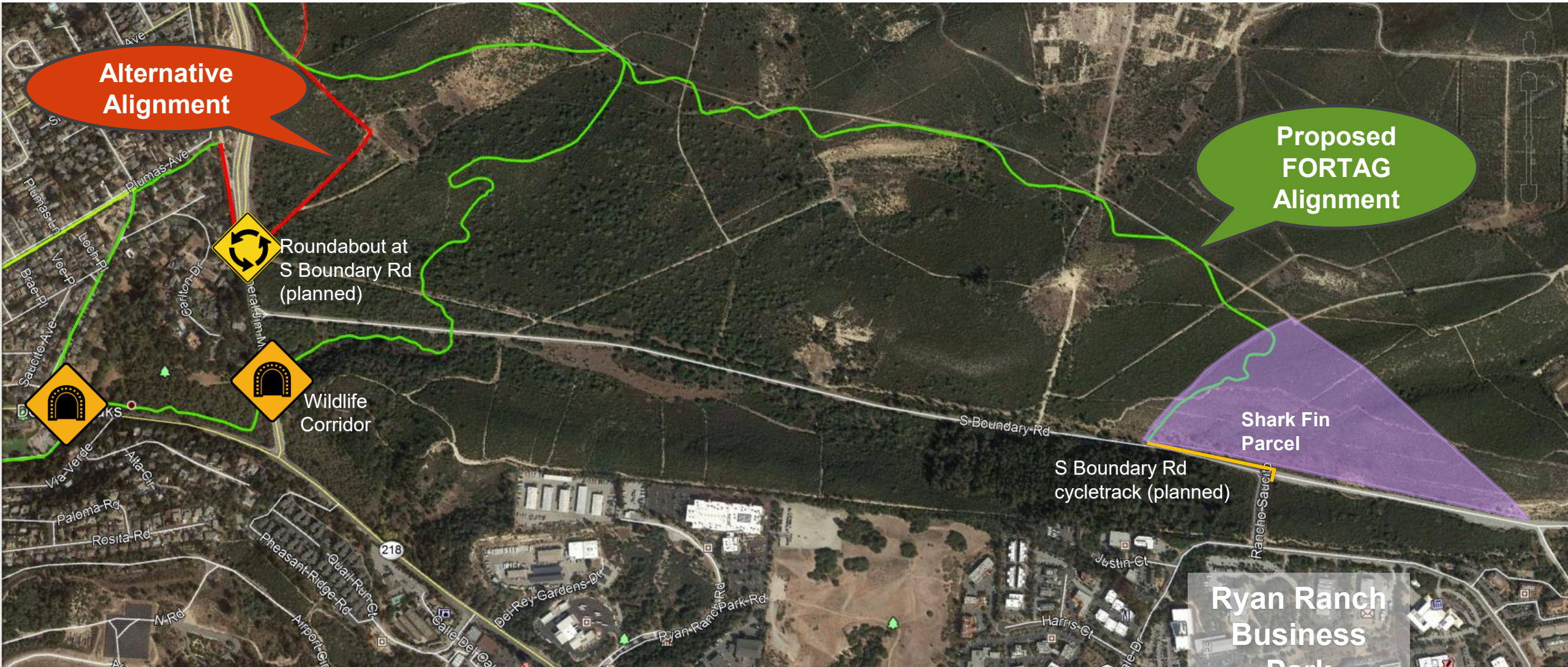


Alternative Alignment

Proposed FORTAG Alignment

Existing North Fremont Multi-Modal Corridor

# Ryan Ranch Segment



Alternative Alignment

Proposed FORTAG Alignment



Roundabout at S Boundary Rd (planned)



Wildlife Corridor

Shark Fin Parcel

S Boundary Rd cycletrack (planned)

Ryan Ranch Business Park