

An aerial photograph of the Elkhorn Slough Corridor. The image shows a winding river with several loops and meanders, surrounded by brownish marshlands. A highway bridge crosses the river in the middle ground. In the background, there are rolling hills and a small town. The foreground is dominated by a green and white graphic design with diagonal stripes and a white curved shape.

**HIGHWAY 1 ELKHORN SLOUGH CORRIDOR
CLIMATE RESILIENCY PROJECT**
Rail Policy Committee, January 8, 2026

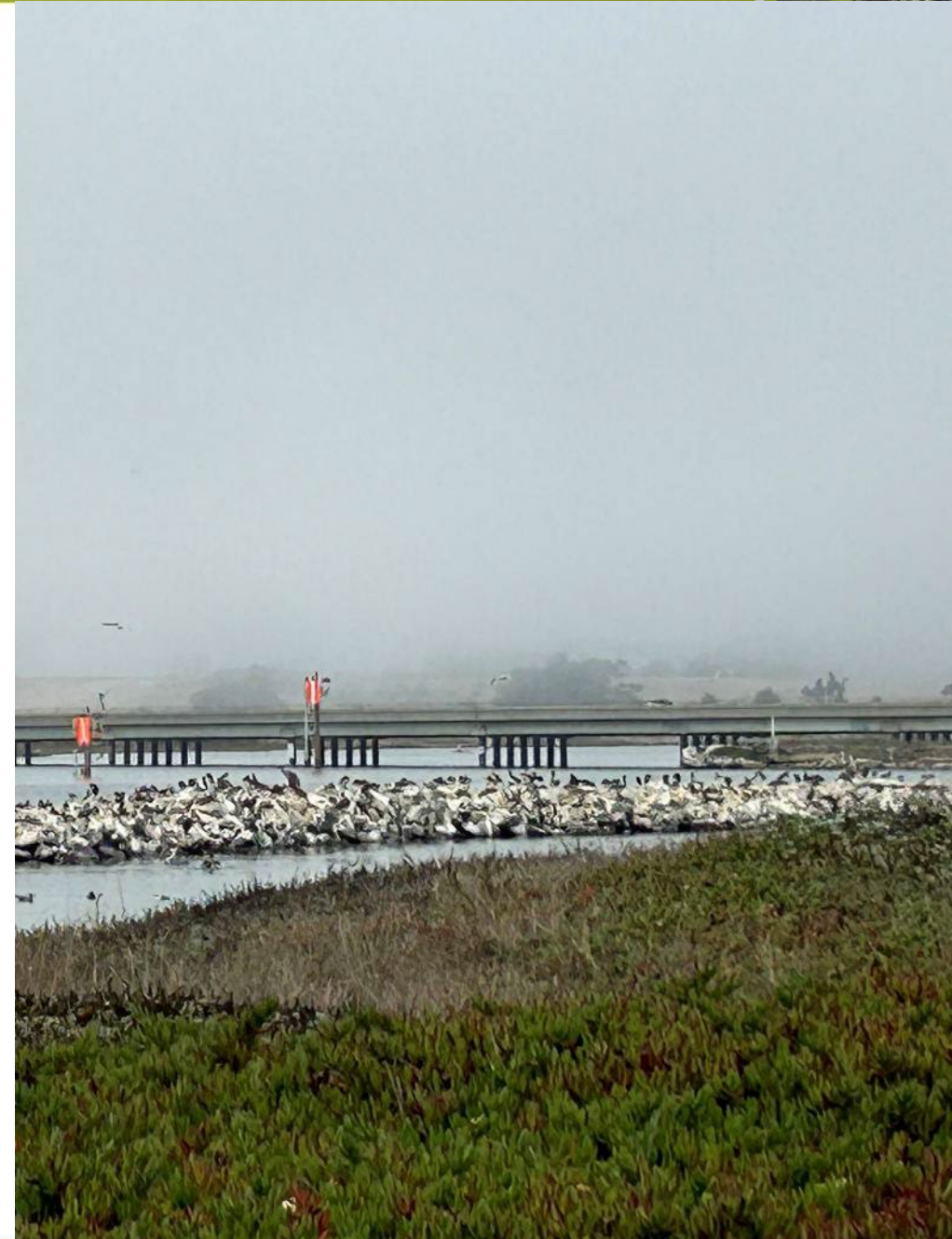


Today's Action

RECEIVE information on the Highway 1 Elkhorn Slough Corridor Climate Resiliency project activities

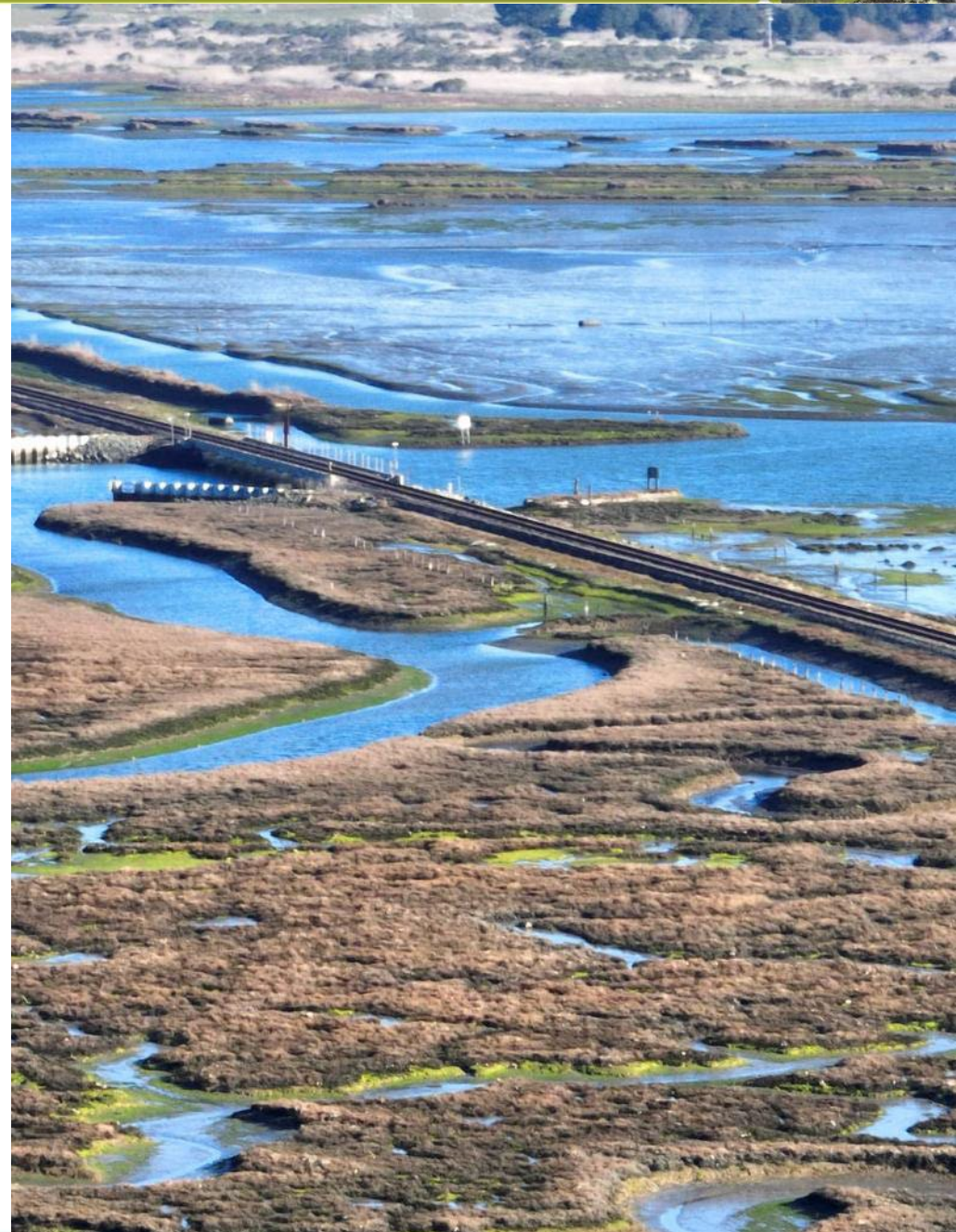
Project Milestones and Deliverables

- Outreach Plan
- Traffic Memo
- Sea Level Rise Modeling
- Existing Conditions



Upcoming Outreach

- March 2026 – Advisory Group Meeting
- April 2026 – Public Engagement
- Summer 2026 – Public Workshop



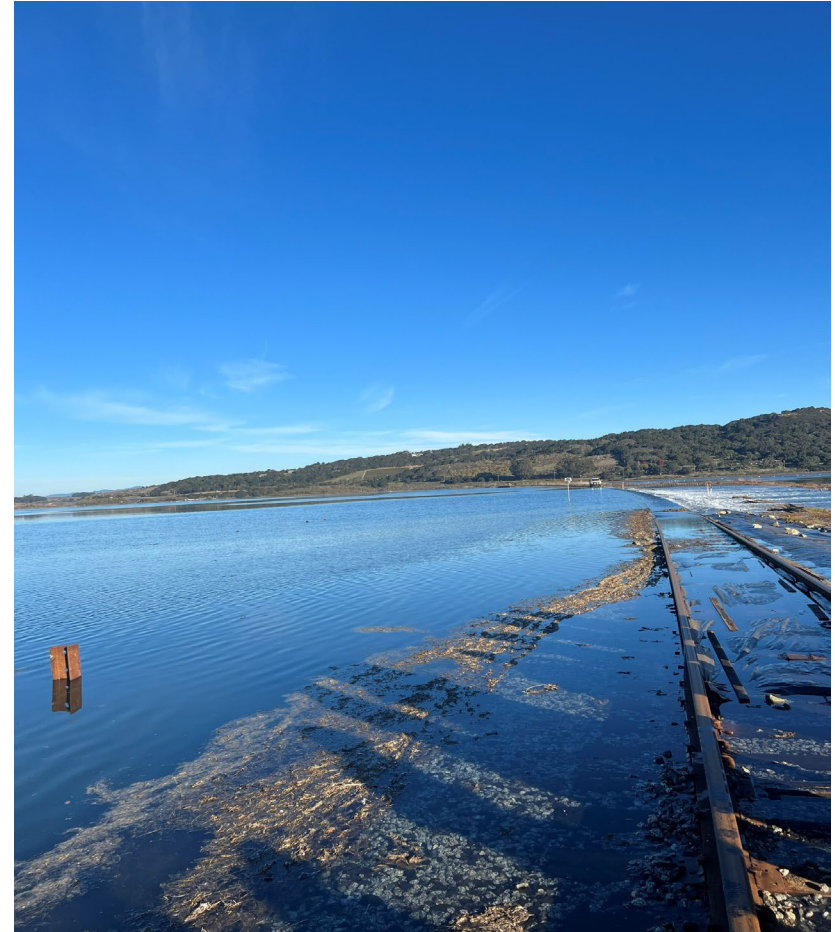
December 4, 2025 King Tide Visit



Track Overtopping



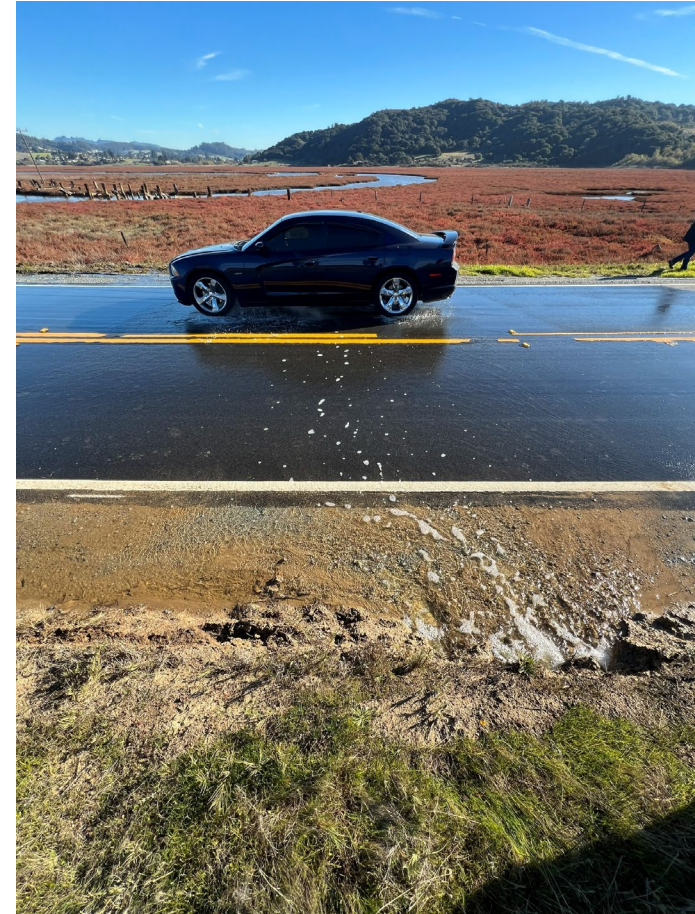
Service Road Flooding and Track Submersion



Service Road Flooding and Track Submersion



Elkhorn Road



Video Showing King Tides



Engagement with Partner Agencies

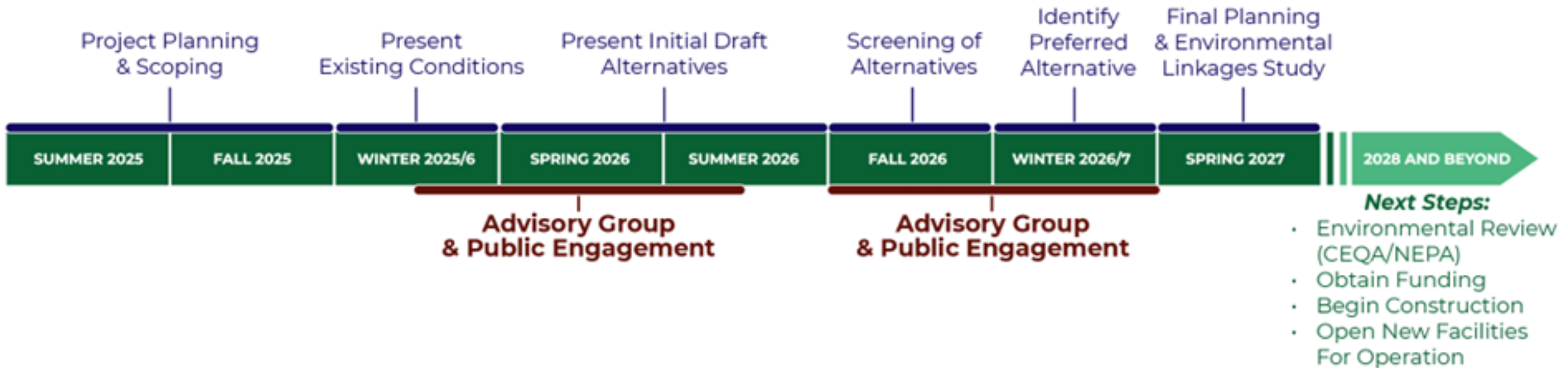
- Steering Committee
- Advisory Group
- Technical Advisory Group
- Roundtables/Listening Sessions



Copyright Chris Mohs

Stakeholder & Public Engagement Timeline

Elkhorn Slough/Highway 1 Planning and Environmental Linkages (PEL) Study Process



Next Steps

Advisory Group Meeting	March 11, 2026
Public Engagement-Office Hours	Spring 2026
Begin Alternatives Screening	Summer 2026
Public Workshop	June/July 2026

SR 1 Elkhorn Slough
Project Website



Thank You!
Alissa Guther, alissa@tamcmonterey.org