

North Monterey County Regional Transportation Vulnerability Assessment

June 27, 2026

Credit: Pathways Climate Institute



Agenda

1. Project Overview
2. Public Outreach Summary
3. Hazards
4. Exposure & Vulnerability Assessment
5. Hazard Viewer
6. Prioritization
7. Applications and Next Steps

Project Overview

Regional Transportation Vulnerability Assessment (RTVA)



Identified vulnerable transportation infrastructure to climate hazards



Assessed impacts to low-income and disadvantaged communities and sensitive habitats



Created a project prioritization list for adaptation strategies



Engaged with our TAC, Focus Group, and the public.

Project Outcomes



- ✓ Help TAMC understand hazards of interest for every project
- ✓ Support future climate resiliency projects
- ✓ Benefit other agencies and asset-owners in the North Monterey County

Project Team



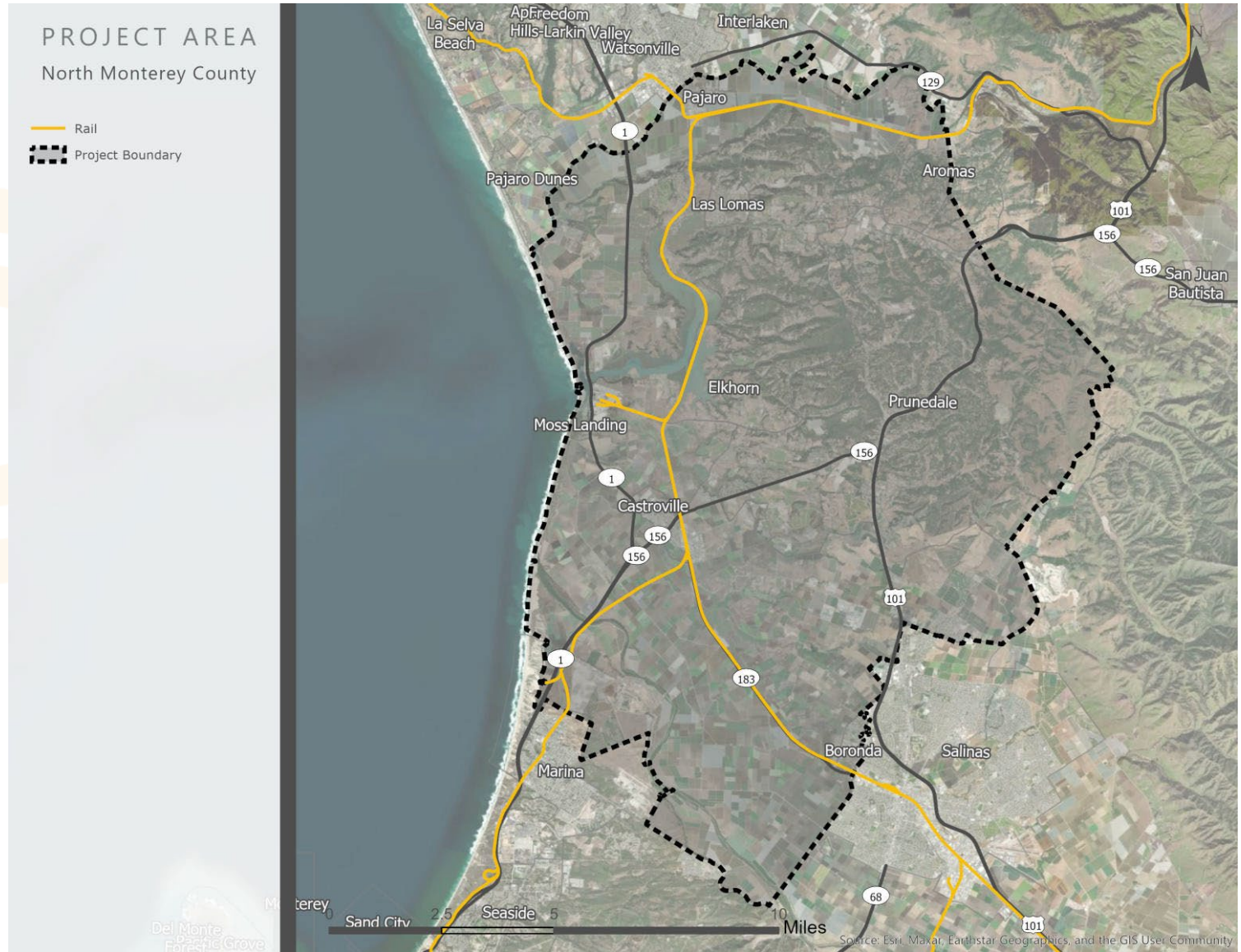
Technical
Advisory
Committee



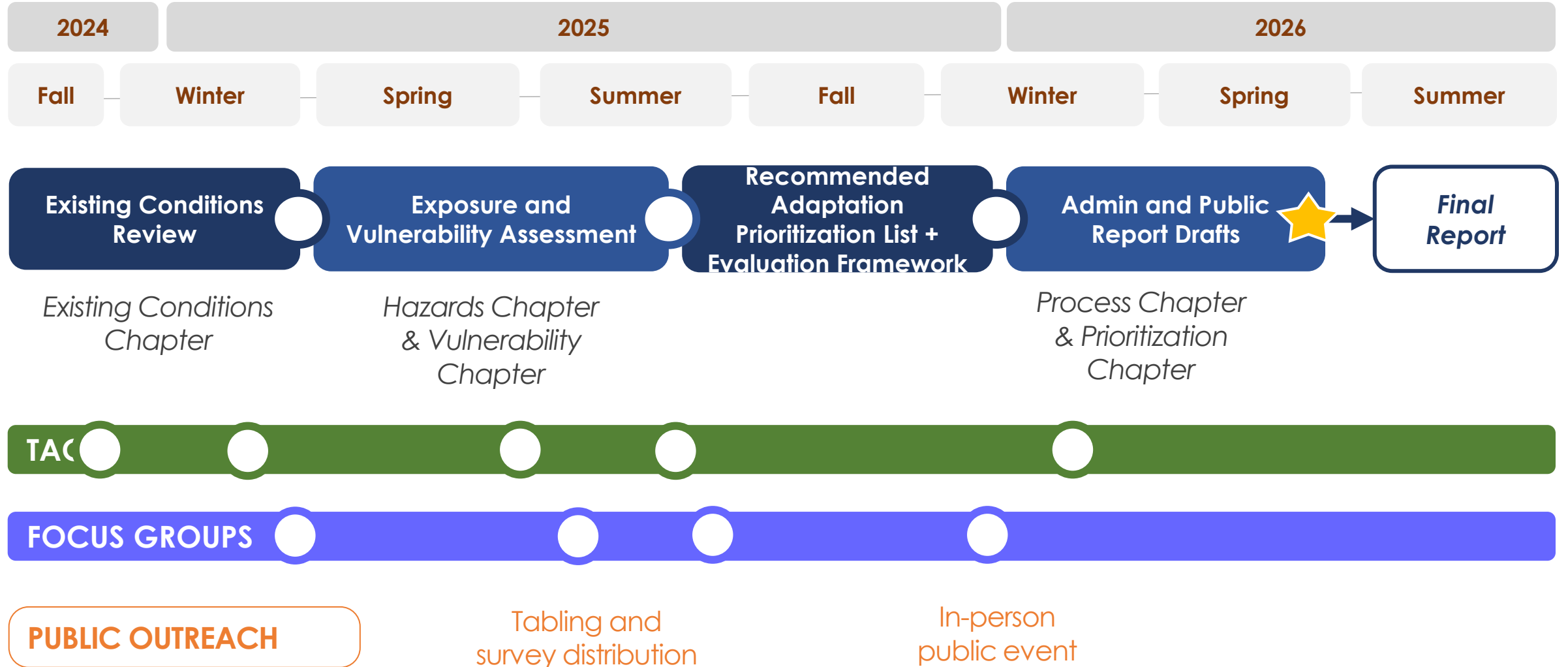
Focus
Group

Study Area

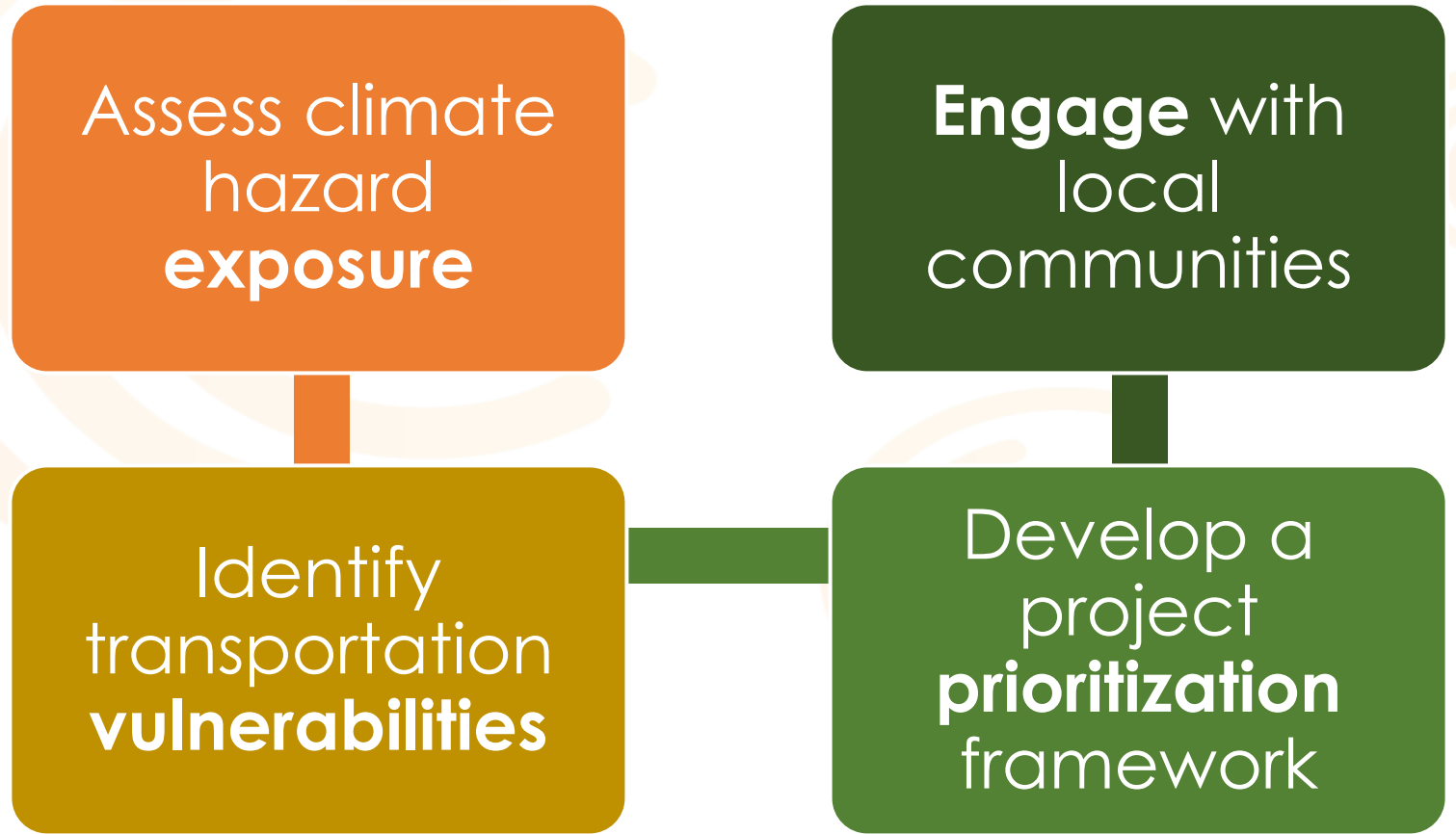
- Geography: Northern Monterey County
- Communities:
 - Moss Landing
 - Elkhorn
 - Pajaro
 - Castroville



Project Workflow and Timeline



Regional Transportation Climate Vulnerability Assessment



Regional Transportation Vulnerability Assessment

Multi-hazard
assessment using
best available
climate science
and hazard data

Global

*Intergovernmental
Panel on
Climate Change
CMIP6*



National

*Fifth National
Climate
Assessment*



State

*Fifth California
Climate
Assessment*



Funded by California Department of Transportation (Caltrans)
Sustainable Transportation Planning Climate Adaptation Planning Grant



Public Outreach Summary

Credit: Pathways Climate Institute

Vulnerability and Prioritization



Vulnerability of transportation assets and roads



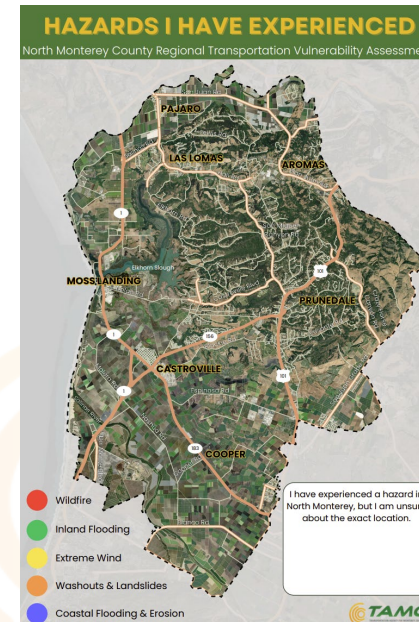
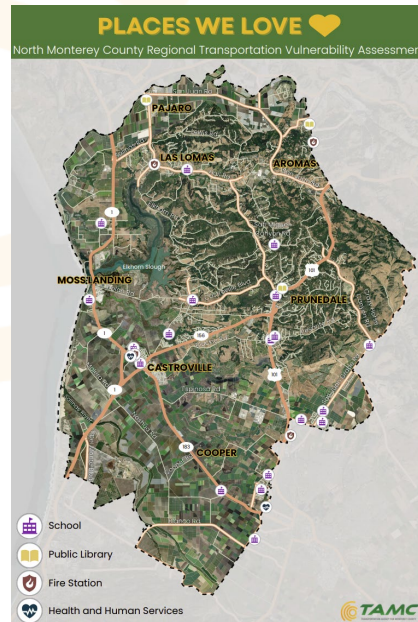
Relevance and impacts of transportation assets and roads to communities



Community informed recommended prioritization list

Public Outreach Summary

- In-person events at farmers markets
- Collaboration with CSU Monterey Bay students
- Focus Group meetings
- Presentations to local relevant projects and organizations
- [TAMC RTVA Survey](#)
- Community Open House



What We've Heard

- The winter / rainy season causes heavy flooding along
 - Blackie, Blanco, Dolan, Elkhorn, Hall, Strawberry and Werner Roads
- Unable to access destination / stranded during flood events
- Students are unable attend school due to flooded roadways
 - School buses turn around or arrive late
 - Unsafe driving conditions
 - Concerns over student safety
- Residents rely on communication with family / friends in other areas for road conditions

Community Open House

- Castroville Public Library
- Science fair layout
- In-language content
- Bilingual staff support (Regeneración Pajaro Valley Climate Action)
- Kids table, light snacks, and refreshments

NORTH MONTEREY COUNTY REGIONAL TRANSPORTATION VULNERABILITY ASSESSMENT

COMMUNITY OPEN HOUSE

Learn about how climate hazards will continue to impact North Monterey County's roads and help us decide which roads to prioritize!



Photo: Kerstin Wasson/ESNER

December 4, 2025

5-7 PM

Castroville Library

What to expect: An informal, drop-in event where you can:

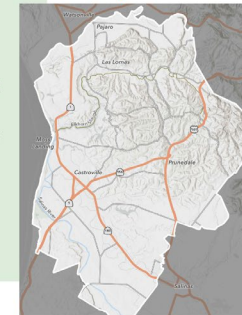
- Visit different information stations at your own pace (like a science fair)
- View maps showing vulnerable areas
- Talk with our team and ask questions
- Share your ideas and concerns
- Enjoy light refreshments!

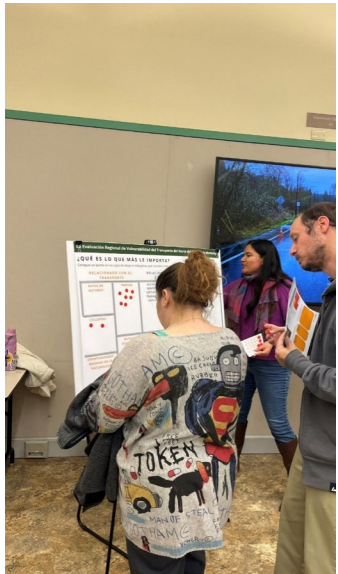
Your input will shape future road investments in North Monterey County!

Learn more:

<https://www.tamcmonterey.org/north-monterey-county-regional-transportation-vulnerability-assessment>

Project Area





La Evaluación Regional de Vulnerabilidad del Transporte del Norte del Condado de Monterey

¿QUÉ ES LO QUE MÁS LE IMPORTA?

Coloque un punto en las cajas de abajo e indiquenos qué considera más importante.

| RELACIONADO CON EL TRANSPORTE | | RELACIONADO CON LA COMUNIDAD | |
|--|---------------------|--|---|
| RUTAS DE AUTOBÚS | TRÁFICO | ACCESO A SERVICIOS CRÍTICOS O TRABAJOS Y EMPLEOS | SIRVE O ESTÁ CERCA DE UNA COMUNIDAD DESFAVORECIDA |
| CICLOVÍAS | | | |
| OPORTUNIDADES BASADAS EN LA NATURALEZA | RUTAS DE EVACUACIÓN | ACCESO A SENDEROS O ZONAS RECREATIVAS | |

¿QUÉ OTRAS COSAS DEBERÍAMOS TENER EN CUENTA?

Escriba su respuesta en una nota adhesiva a continuación. ¡Agregue puntos si está de acuerdo con alguna nota adhesiva ya escrita!

(The board contains several blue sticky notes with handwritten responses.)

La Evaluación Regional de Vulnerabilidad del Transporte del Norte del Condado de Monterey

PERFIL DE ÁREA VULNERABLE 5

CARRETERA BLANCO

Castroville, Salinas, East Garrison

INFORMACIÓN DE LA CARRETERA

4 millas en total de carretera en tierras bajas

Proporciona acceso crítico a:

- El centro médico Salinas Valley Health
- La ciudad de Salinas
- La ciudad de Marina y la costa

PUNTUACIONES DE VULNERABILIDAD

| Peligro | Presente | Futuro (2080 - 2100) |
|---|----------|----------------------|
| Inundaciones de marea alta | 2 | 2 |
| Inundaciones costeras | 4 | 4 |
| Aumento de las aguas subterráneas | 2 | 4 |
| Inundaciones fluviales y tierras interiores | 5 | 5 |
| Hundimiento de la tierra | 5 | N/A |

IMPACTOS EN LA COMUNIDAD

¿Cómo podría afectarle este cierre de carretera? Por favor coloque un punto en las cajas con las que esté de acuerdo o agregue una nota para proporcionar más información.

| | | | |
|--|--------------------------------------|-------------------------------------|--|
| NO PUEDO ACCEDER AL TRABAJO O A SERVICIOS CRÍTICOS | CAMBIO DE RUTA O MÁS TIEMPO DE VIAJE | VARADO O AISLADO | ¿Qué le gustaría que se abordara en esta área? Por favor agregue sus comentarios en la caja. |
| <i>(Yellow box with 5 red dots)</i> | <i>(Yellow box with 5 red dots)</i> | <i>(Yellow box with 2 red dots)</i> | <i>(Yellow box with 5 red dots and a pink sticky note)</i> |

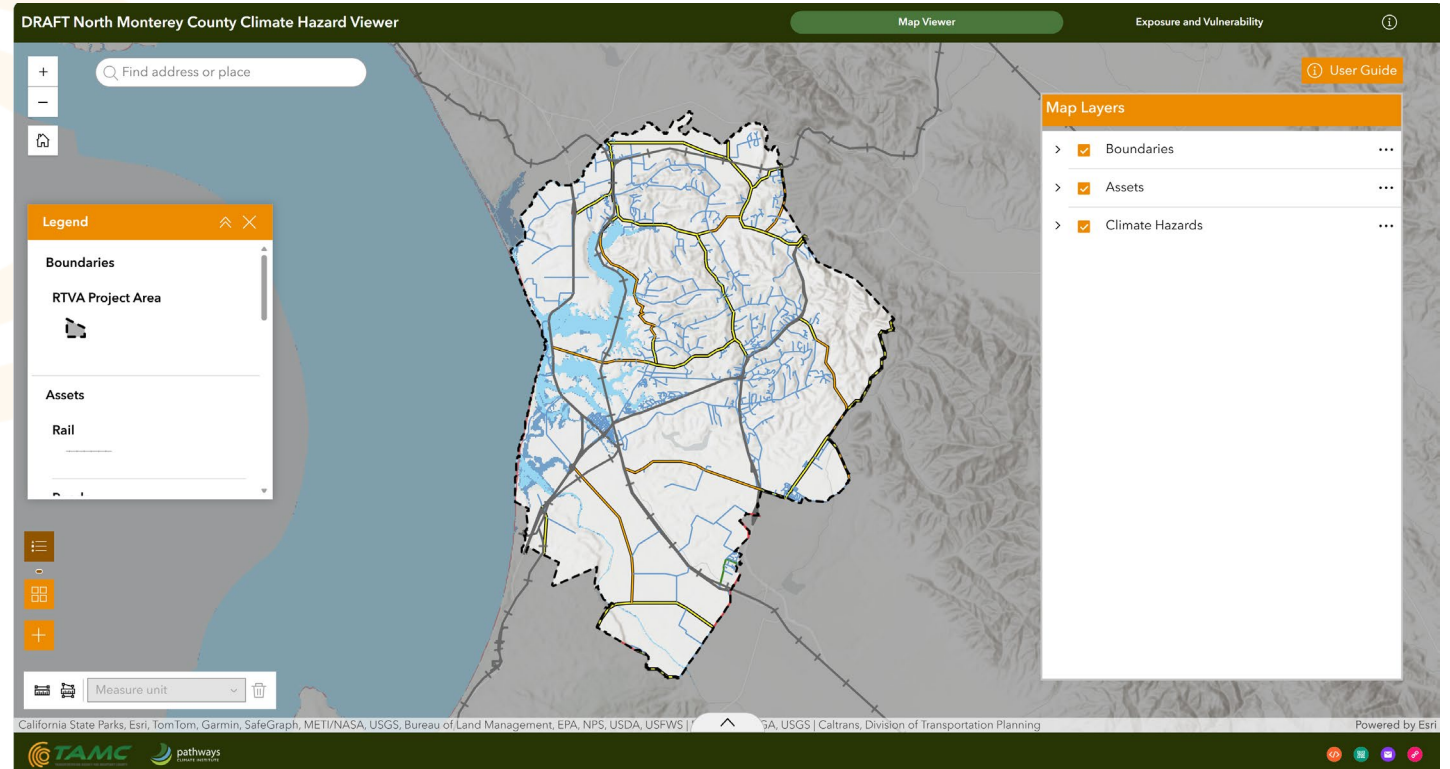
Findings from Open House

- Validated vulnerable areas (5)
- Validated proposed prioritization metrics
- Obtained information on additional roads of concern
- Confirmed community interest
- Received recommendations for future outreach



North Monterey County Hazard Viewer

- Dynamic online viewer
- Explore North Monterey hazards, exposure and vulnerability results





Prioritization



Credit: Pathways Climate Ins

Prioritization Metrics



Bikeway



Bus Route



Evacuation
Route



Traffic
Demand



Trail Access

TRANSPORTATION-RELATED



Caltrans
Transportation
Equity Index



Disadvantage
d Communities



Community
Identified
Asset Access



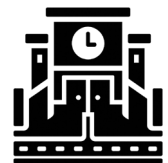
Critical
Services
Access



Parks
Access



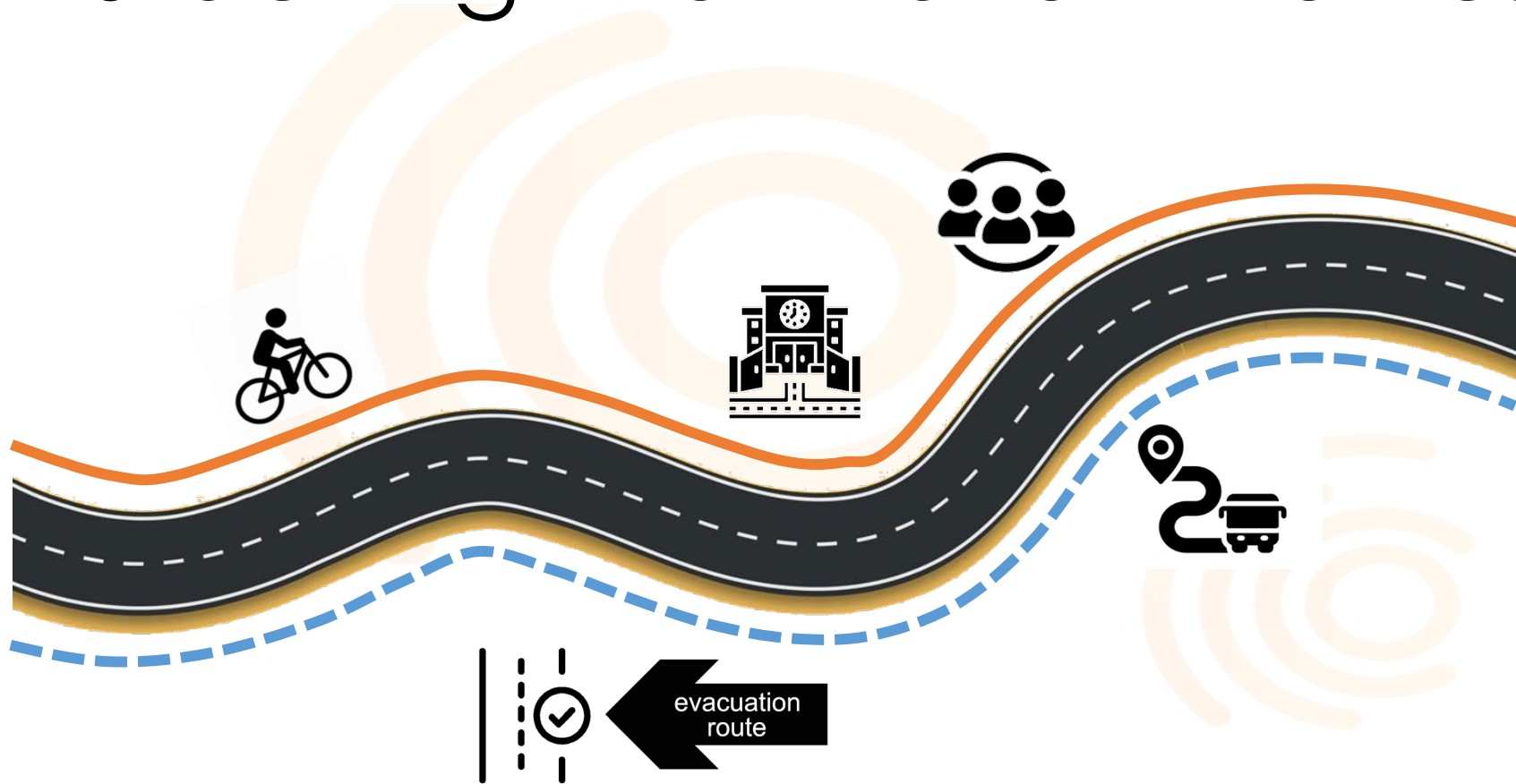
Safe Routes
to School –
Biking



Safe Routes to
School –
Walking



COMMUNITY-RELATED

Stacking Prioritization Metrics



- ✓ Bikeway
- ✓ Bus route
- ✓ Evacuation route
- ✓ Serves disadvantaged
- ✓ community school zone

Prioritization Viewer

[About](#)
[How to Use](#)

ROAD VULNERABILITY PRIORITIZATION

North Monterey County · Coastal and Low-Lying Roads

BASEMAP

Street Aerial

CLIMATE SCENARIO

Historical

Intermediate Mid-Century

Very High Mid-Century

Intermediate Late-Century

Very High Late-Century

HAZARD TYPES

High Tide Flooding ✓ on

Coastal Flooding ✓ on

Groundwater Rise ✓ on

Riverine & Inland Flooding ✓ on

Subsidence ✓ on

ROADWAY FUNCTIONAL CLASS

All Classes

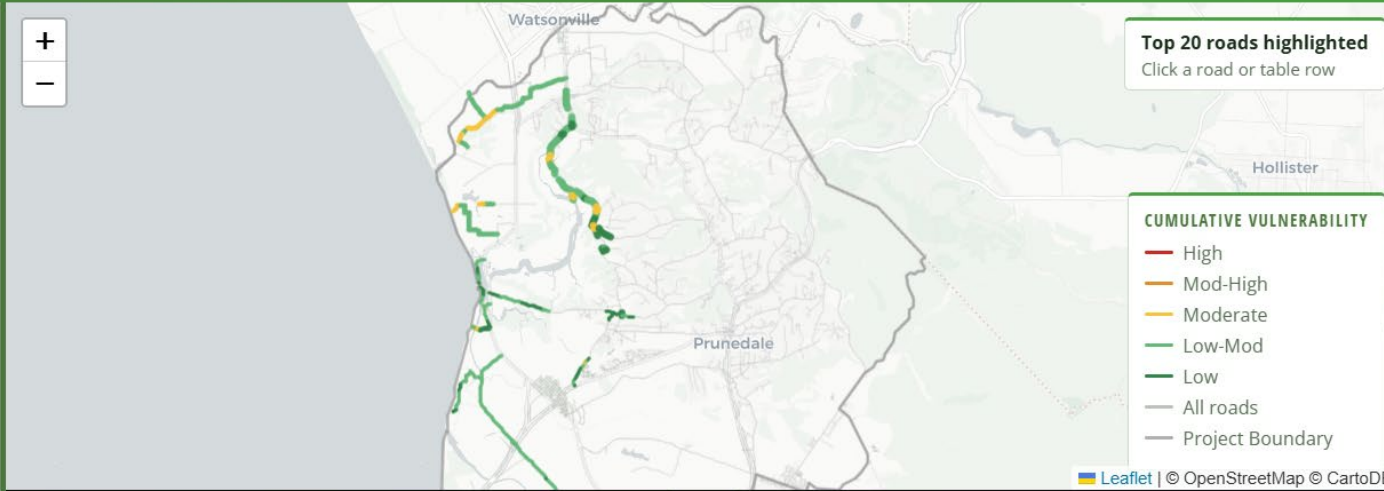
PRIORITY METRICS

Individual ⓘ

Balanced ⓘ

TRANSPORTATION


Bikeways 28 ⓘ



TOP 20 PRIORITY ROADS All roads HISTORICAL

Top 20 Top 100

| RANK | ROADWAY NAME | ROADWAY FUNCTIONAL CLASS | CUMULATIVE VULNERABILITY SCORE TL | VULNERABILITY BREAKDOWN | SELECTED PRIORITY METRIC |
|------|-----------------|--------------------------|--|-------------------------|--------------------------|
| 1 | Elkhorn Road | Minor Collector | 14 | ■ ■ ■ ■ ■ | — |
| 2 | Kirby Road | Local | 14 | ■ ■ ■ ■ ■ | — |
| 3 | Strawberry Road | Local | 13 | ■ ■ ■ ■ ■ | — |
| 4 | Giberson Road | Local | 13 | ■ ■ ■ ■ ■ | — |
| 5 | Potrero Road | Local | 12 | ■ ■ ■ ■ ■ | — |
| 6 | Tafton Road | Local | 12 | ■ ■ ■ ■ ■ | — |



Prioritization List

Table 6-2. Comparison of Vulnerable Roads Across **All** Prioritization Metrics

| Rank | Transportation- and Community-related Metrics (Vulnerability Score / Number of Metrics Met) | Transportation-related Metrics (Vulnerability Score / Number of Metrics Met) | Community-related Metrics (Vulnerability Score / Number of Metrics Met) |
|------|---|--|---|
| 1 | Elkhorn Road (14/8) | Elkhorn Road (14/4) | Castroville Boulevard (11/5) |
| 2 | Castroville Boulevard (11/8) | Davis Road (11/4) | Salinas Road (7/5) |
| 3 | Salinas Road (7/8) | Blanco Road (10/4) | Matiasевич Lane (7/5) |
| 4 | San Juan Road (8/7) | San Juan Road (8/4) | Bishop Street (7/5) |
| 5 | Porter Drive (7/7) | San Miguel Canyon Road (6/4) | Preston Street (5/5) |
| 6 | Merritt Street (6/7) | Castroville Boulevard (11/3) | Elkhorn Road (11/4) |
| 7 | Davis Road (11/6) | Nashua Road (10/3) | Preston Road (8/4) |
| 8 | Blanco Road (10/6) | Salinas Road (7/3) | McFadden Road (8/4) |
| 9 | Hall Road (6/6) | Porter Drive (7/3) | Brooklyn Street (7/4) |
| 10 | Blackie Road (5/6) | Reservation Road (7/3) | Railroad Avenue (7/4) |

Looking Ahead

Apply findings
to current and
future
projects

Prioritize
based on risk
or funding
opportunities

Collaborate
with local
agencies and
CBOs

Questions?



Thank you!

Public Draft Review: May
18-June 16, 2026

Final Draft: by June 30,
2026



Credit: Pathways Climate Institute

Recommended Board Action

- **RECEIVE** presentation on the North Monterey County Regional Transportation Vulnerability Assessment

