



City of Marina

Fort Ord Regional Trail & Greenway

Draft Environmental Impact Report

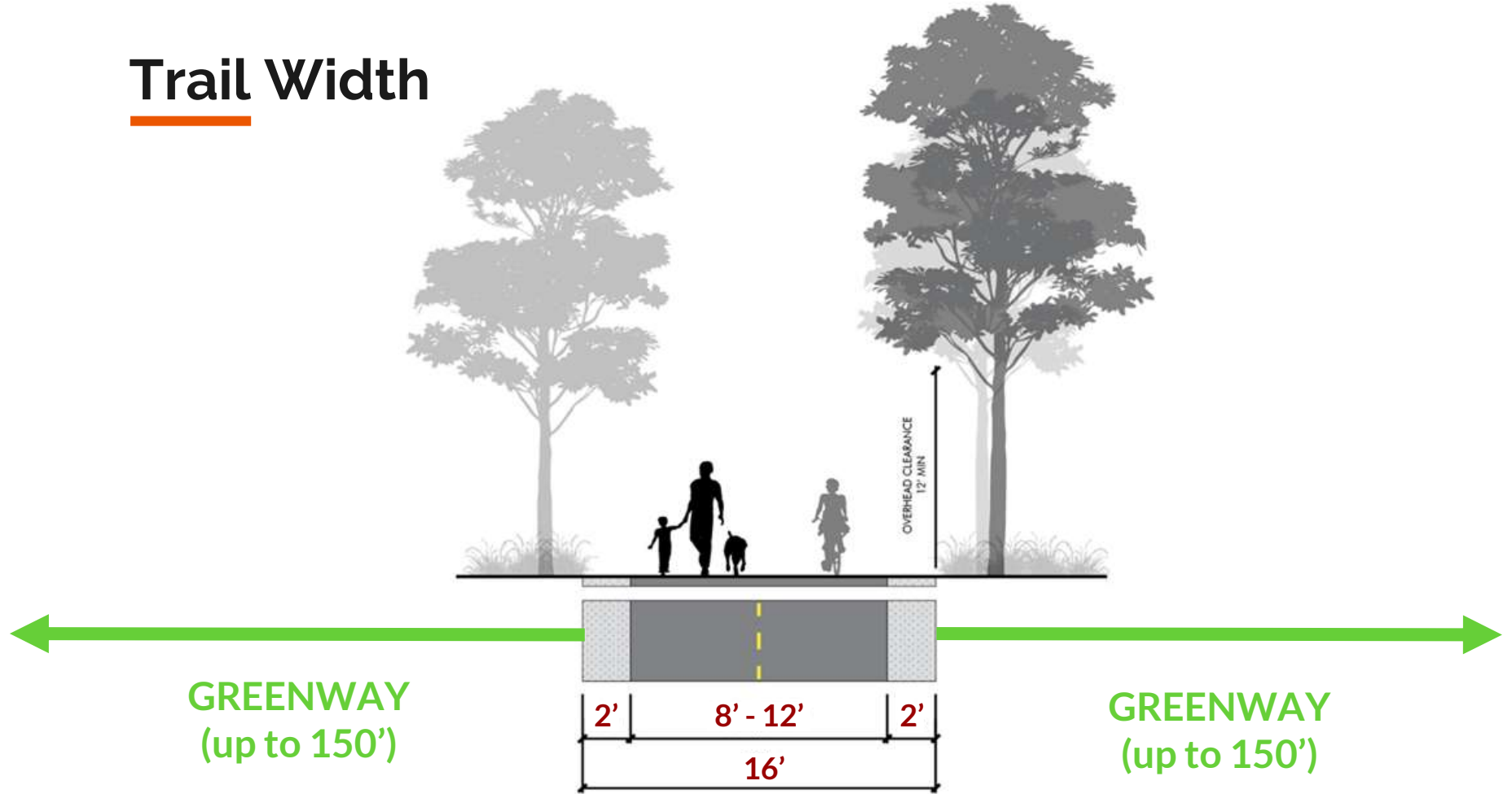
Project Vision

28 mile multi-use trail

- Safe, accessible, and separated alternative to cars
- Connect people to open space and recreation
- Enhance connections between Fort Ord, Monterey Peninsula, and Salinas Valley
- Function as habitat corridor
- Complementary to the built environment



Trail Width



An aerial photograph of a rural landscape. In the foreground, a river flows through a dense thicket of green trees and shrubs. The middle ground features several large, rectangular agricultural fields, some with vibrant green crops and others with dark brown soil. The background shows a vast, flat plain extending to a range of low mountains under a clear blue sky. The text "Draft Environmental Impact Report" is overlaid in the center in a large, white, sans-serif font.

Draft Environmental Impact Report

Environmental Impacts and Mitigations



Biological
Resources



Aesthetics



Public Safety
and Services



Hydrology and
Water Quality

Mitigation measures to reduce impact:

- Habitat mitigation and monitoring
- Biological resources avoidance and minimization
- Construction best management practices
- Invasive weed management
- Wetland restoration
- Native American resources monitoring

**Draft EIR
public
comment
period
closes
January 3,
2020**

City of Marina

A scenic view of a coastal dune area. In the foreground, a paved concrete path curves through the landscape, bordered by a low metal railing. The ground is covered with sparse, low-lying vegetation in shades of green, brown, and grey. In the background, rolling dunes lead to a clear blue ocean under a bright, clear sky. The text "City of Marina" is overlaid in the center in a large, white, sans-serif font.

Key Concerns

- Food safety risks related to trail use near agriculture
- Lighting impacts
- Impacts to wildlife and biological resources
- Airport safety zones



Project Alternatives



No Build



Increase use of existing roadways



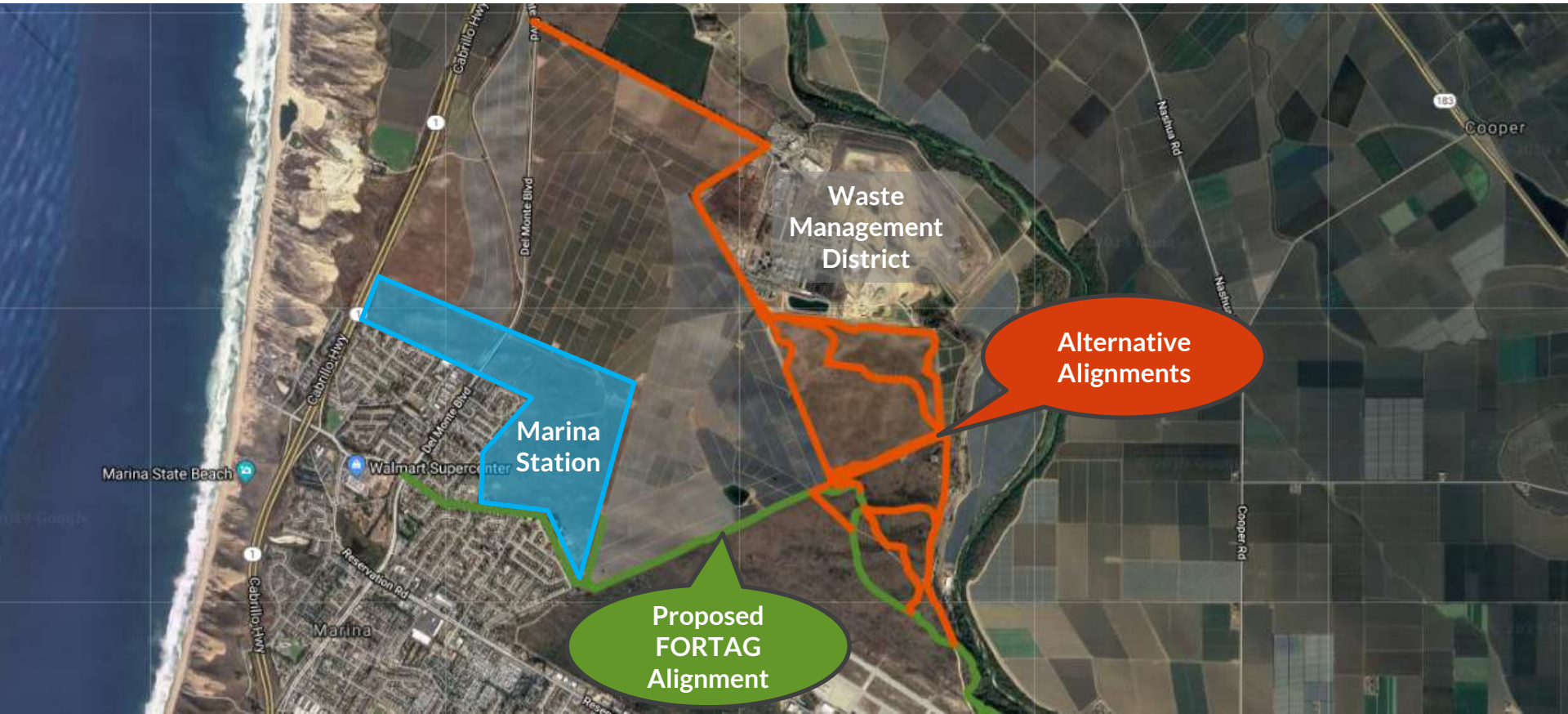
Substitute at-grade crossings



Frog Pond Wetland Preserve
Northerly Alignment

- No trail / continued reliance on cars
- Lower bio impact / lower cost / greater vehicle-bike conflicts / less accessible
- Lower visual impact / Lower cost / greater vehicle-bike and vehicle-ped conflicts
- Lower wetland impact / better separation from existing walking path

Northern Marina



Marina Station

Waste Management District

Alternative Alignments

Proposed FORTAG Alignment

- *Shielded lighting proposed for bridge*
- *The top of bridge is below ground elevation*
- *No stops or amenities encouraging users to stop*
- *No objects are proposed along the trail in Zone 1*
- *The trail is not within 200 feet of the runway*

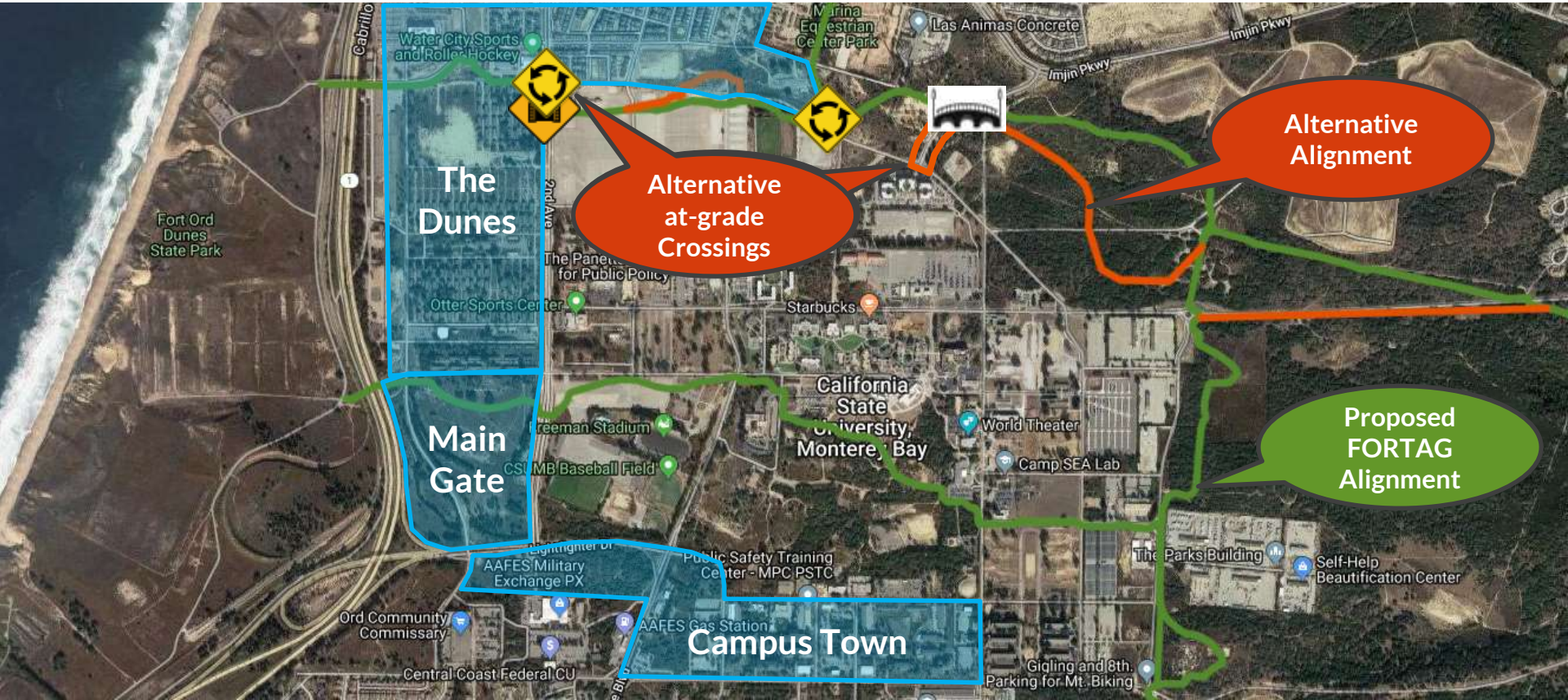


Marina Airport Safety Zones with FORTAG Overlay

Reservation Rd and Inter-Garrison Rd



Cal State University Monterey Bay (CSUMB)



Neighborhood Connection



An aerial photograph of a lush, green landscape. In the foreground, there is a dense thicket of trees and shrubs. A river flows through the lower right portion of the image. In the middle ground, there is a large, open green field, possibly a park or sports field, surrounded by more trees. The background shows rolling hills and mountains under a clear blue sky.

Draft Environmental Impact Report

Public Review Period
Nov. 7, 2019 – Jan. 3, 2020

How do I submit my comments?

Draft Environmental Document

Online: http://bit.ly/TAMC_FORTAG

Hardcopies for viewing: TAMC offices,
Marina and Seaside public libraries

until January 3, 2020

Letter

TAMC
55-B Plaza Circle
Salinas, CA 93901
Attn: Rich Deal,
Principal Engineer

until January 3, 2020

Email

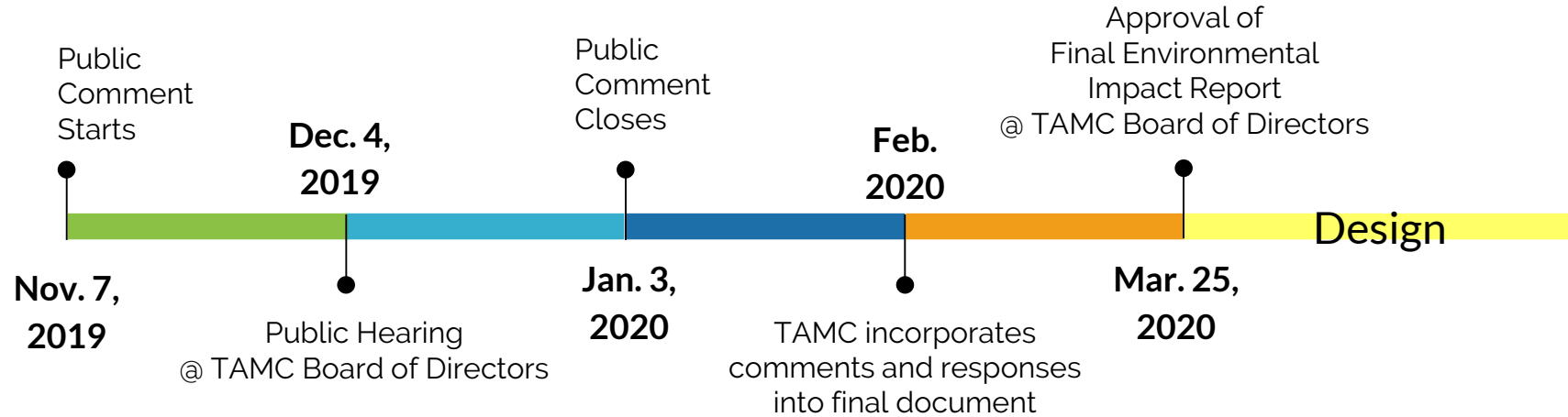
rich@tamcmonterey.org

November 2019 - December 2019

Public Meetings

Check
www.tamcmonterey.com
for dates

Schedule: Environmental Review



Questions?

Rich Deal
Project Manager
rich@tamcmonterey.org

Stefania Castillo
Assistant Project Manager
stefania@tamcmonterey.org

