



# 2026 Regional Fee Update

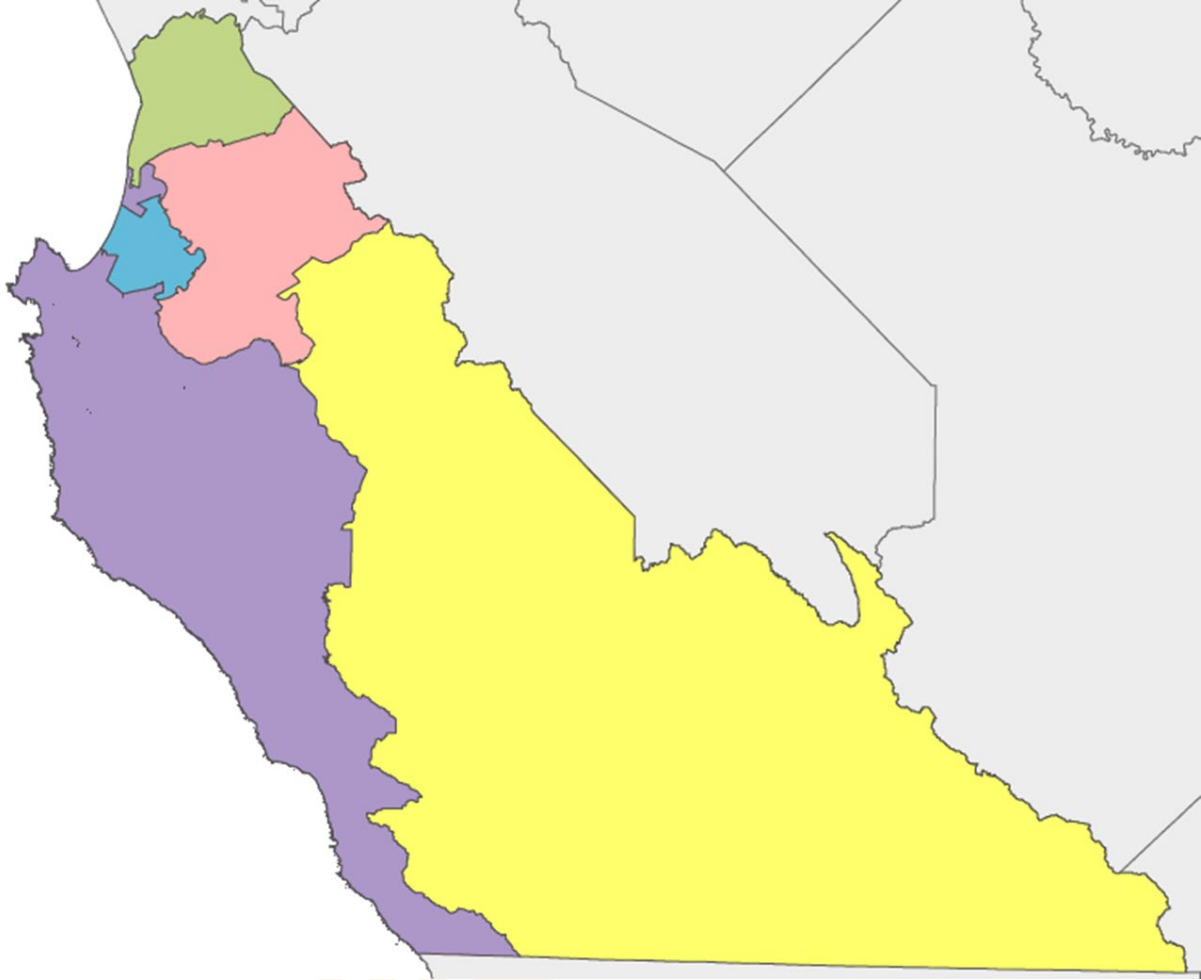


Kimley»»Horn



# Background

- Established August 2008
- Reflects regional travel
- Coordinates with local fees
- 20-year impacts



North County



South County



Greater Salinas



FORA



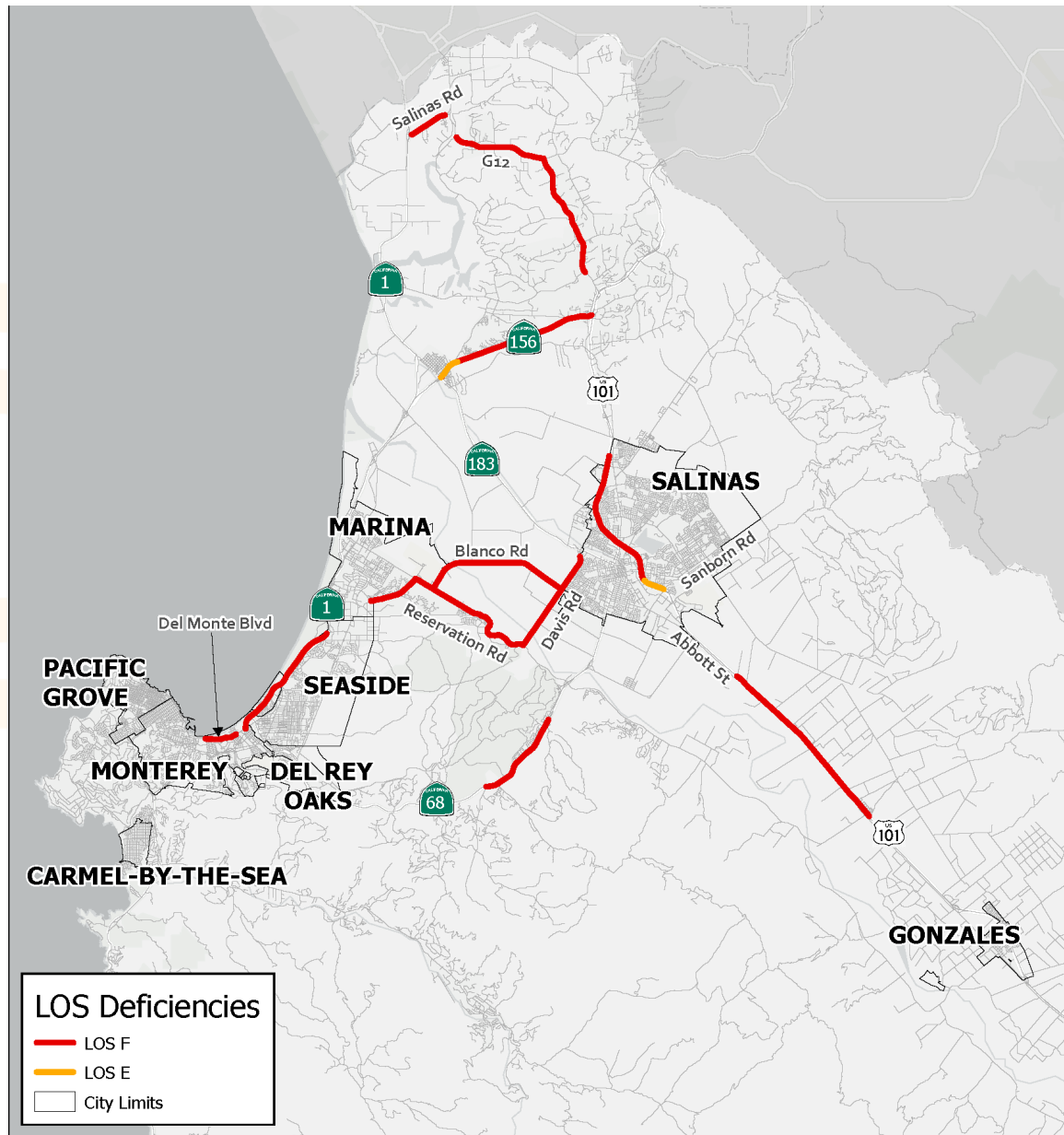
Peninsula / South Coast

# 2026 Regional Fee Update

- AB 602 Compliance
- Eight-Year Update
- LOS Deficiency Analysis
  - Additional Safety Deficiency Analysis
- Review of project list
- Reconfirm fee levels

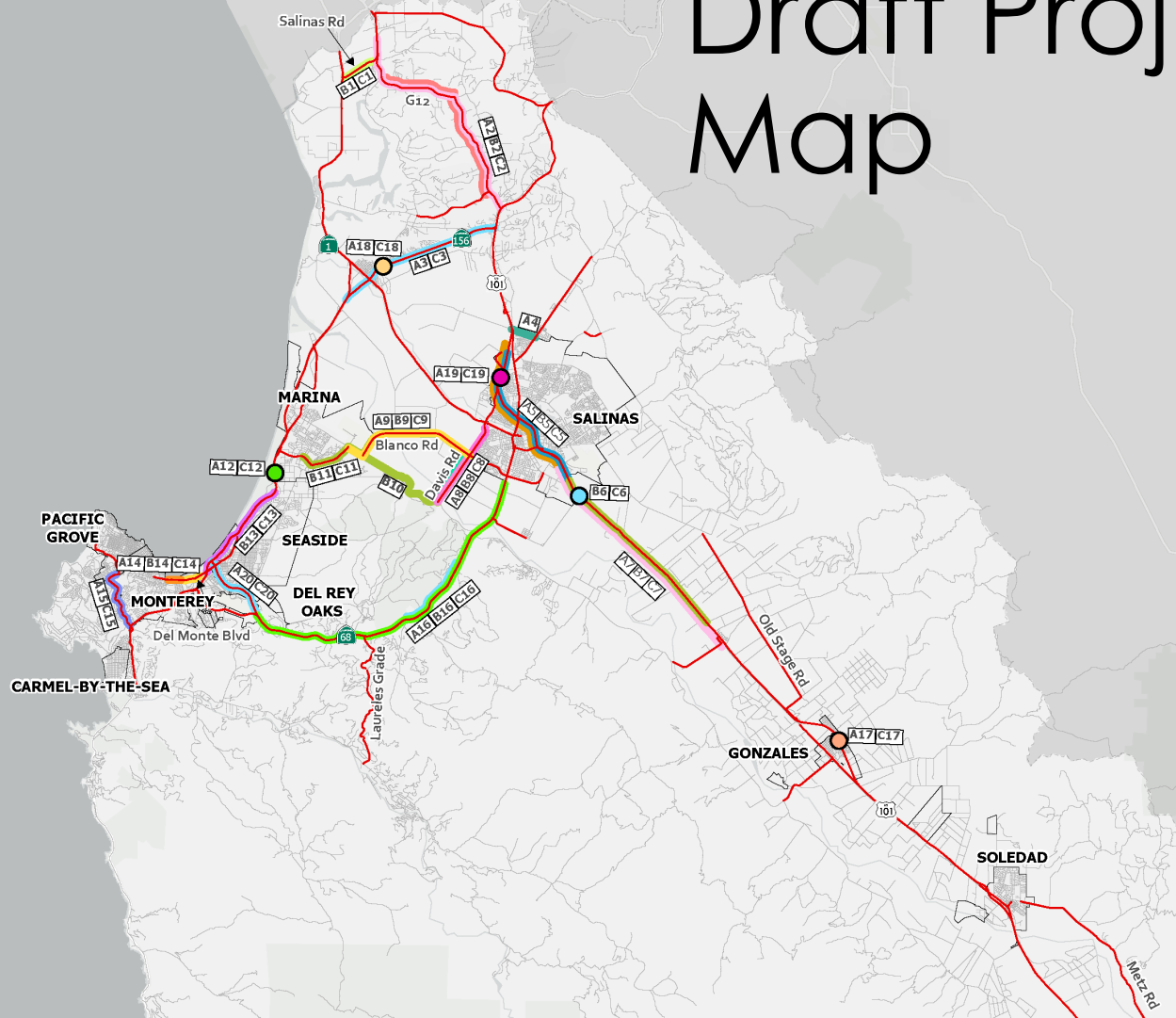
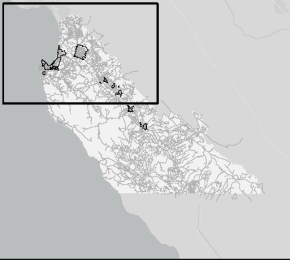


# 2045 Deficiency Status





# Draft Project Map



- AX Project identified in RTP
- BX Project identified in RDIF
- CX Project identified on TAMC HIN
- x Segment/Interchange Number
- Monterey County HIN
- City Limits

# Draft Project List

| No. | Project Name                                    | No. | Project Name   |
|-----|---|-----|--|
| 1   | Salinas Road Improvements                       | 9   | Del Monte Corridor                                     |
| 2   | G12 San Miguel Canyon Corridor Project          | 10  | Holman Highway Safety Improvements                     |
| 3   | Russell Rd Widening                             | 11  | Scenic Route 68 Corridor Improvements                  |
| 4   | US 101 - Salinas Corridor                       | 12  | US 101/5th Street Interchange                          |
| 5   | US 101 - South of Salinas Improvements          | 13  | SR 156 - Castroville Boulevard Interchange             |
| 6   | Davis Road Bridge Replacement and Road Widening | 14  | US 101 - Alvin Drive overpass/underpass and Bypass     |
| 7   | Salinas-Marina Multimodal Corridor              | 15  | SR 218 - Operational Improvements and Complete Streets |
| 8   | SR-1 Corridor & Busway                          |     |  |

# Next Steps

1. Confirm the draft project list
2. Select link model runs & project cost updates
3. Update the regional fee schedule & Nexus Study
4. TAMC Board approval
5. Cities/County approvals