



TAMC Board of Directors

Fort Ord Regional Trail & Greenway

Draft Environmental Impact Report

Environmental Impact Report

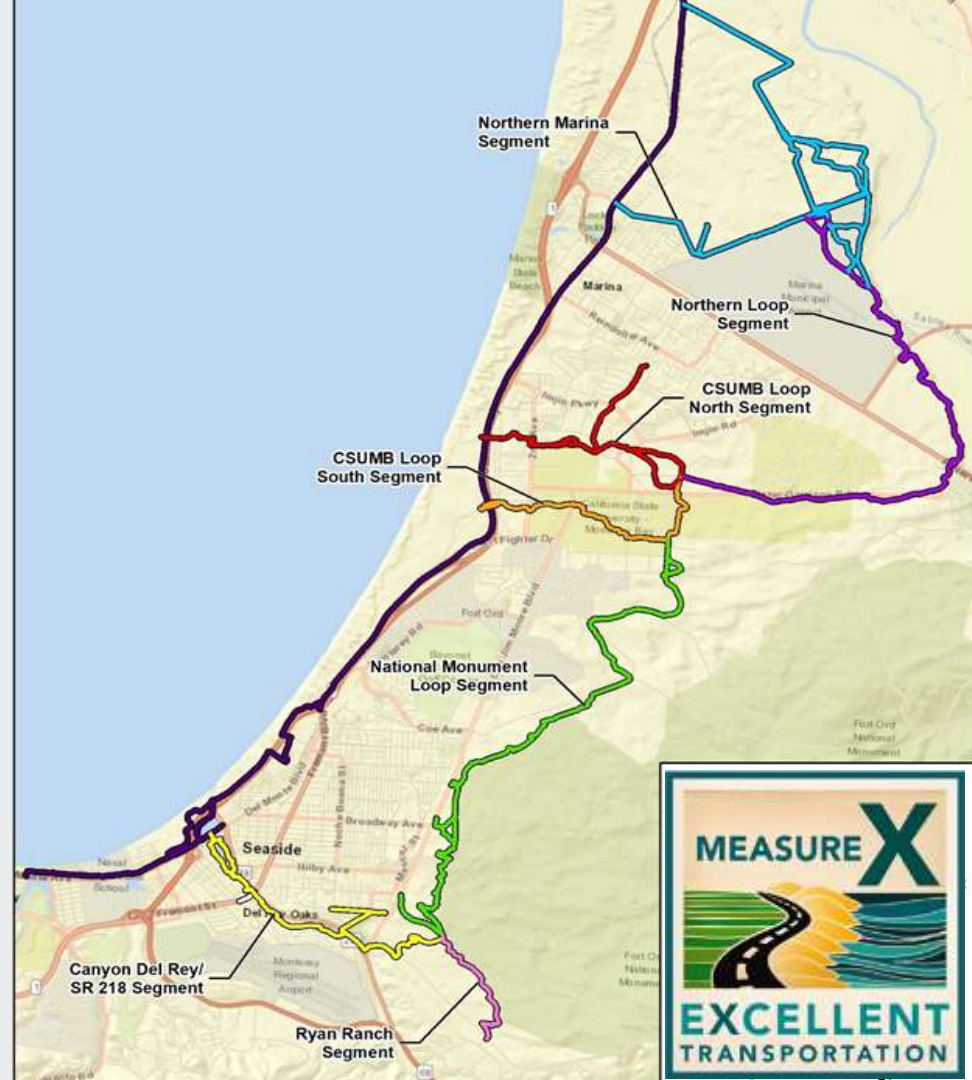
- 1970 California Environmental Quality Act
- Beginning of planning process
- Provide the public with:
 - Information on the project
 - Potential environmental impacts
 - Opportunity to comment



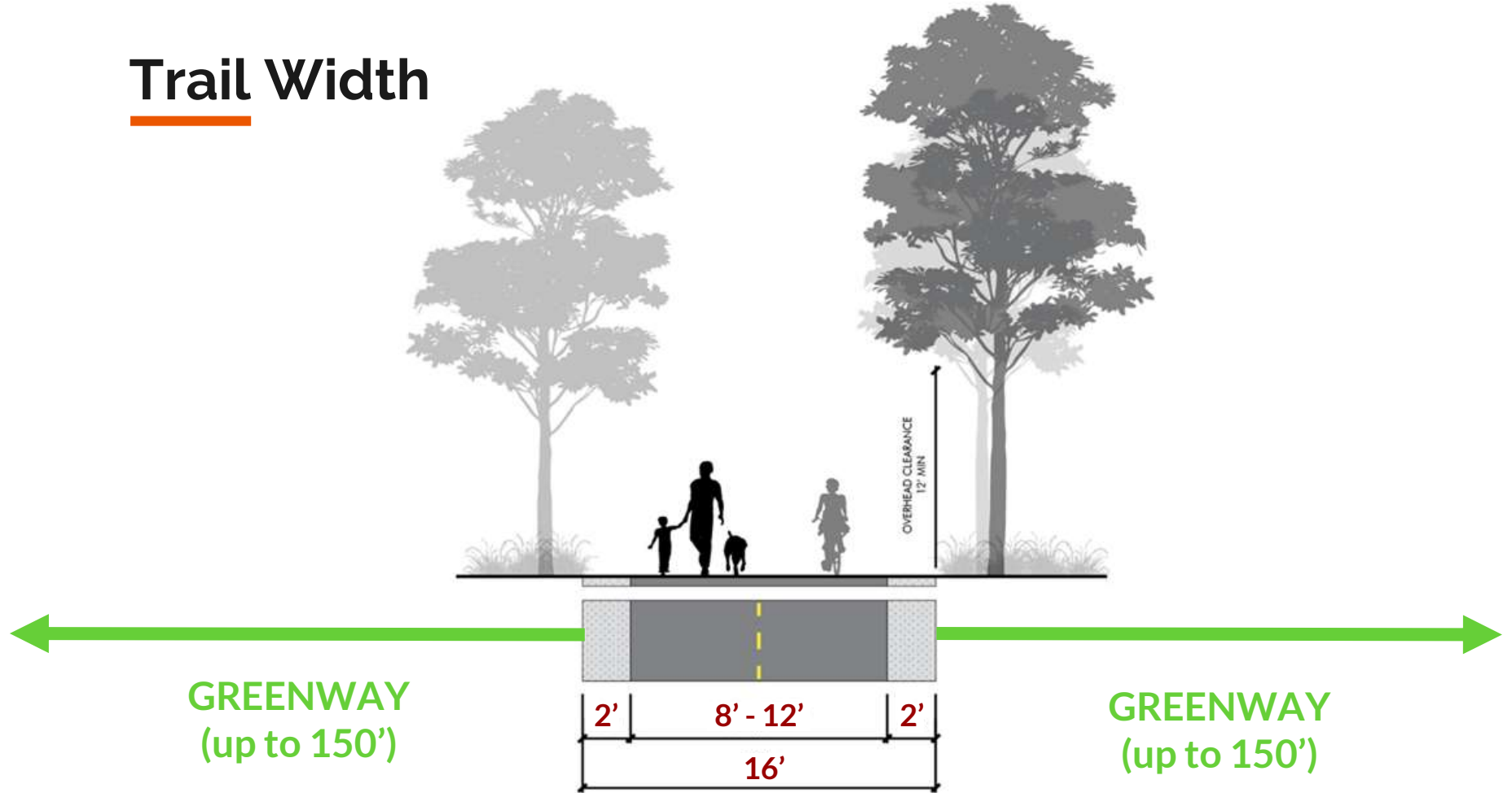
Project Vision

28 mile multi-use trail

- Safe, accessible, and separated alternative to cars
- Connect people to open space and recreation
- Enhance connections between Fort Ord, Monterey Peninsula, and Salinas Valley
- Function as habitat corridor
- Complementary to the built environment



Trail Width



An aerial photograph of a rural landscape. In the foreground, a river flows through a dense thicket of green trees and shrubs. The middle ground features several large, rectangular agricultural fields, some with vibrant green crops and others with dark brown soil. The background shows a vast, flat plain extending to a range of low mountains under a clear blue sky. The overall scene is bright and clear, suggesting a sunny day.

Draft Environmental Impact Report

Environmental Impacts and Mitigations



Biological
Resources



Aesthetics



Public Safety
and Services



Hydrology and
Water Quality

Mitigation measures to reduce impact:

- Habitat mitigation and monitoring
- Biological resources avoidance and minimization
- Construction best management practices
- Invasive weed management
- Wetland restoration
- Native American resources monitoring

**Draft EIR
public
comment
period
closes
January 3,
2020**

Key Concerns

- Impacts to wildlife and biological resources
- Food safety risks related to trail use near agriculture
- Lighting impacts
- Increased bicycle traffic on Angelus Way and Frog Pond Wetland Preserve
- Airport safety zones



Project Alternatives



No Build



Increase use of
existing roadways



Substitute at-grade
crossings



Frog Pond Wetland Preserve
Northerly Alignment

- No trail / continued reliance on cars
- Lower bio impact / lower cost / greater vehicle-bike conflicts / less accessible
- Lower visual impact / Lower cost / greater vehicle-bike and vehicle-ped conflicts
- Lower wetland impact / better separation from existing walking path

Northern Marina Segment

Alternative at-grade crossing for proposed bridge

No objects are proposed along the trail within Airport Safety Zones

Connection to future development



Reservation Rd and Inter-Garrison

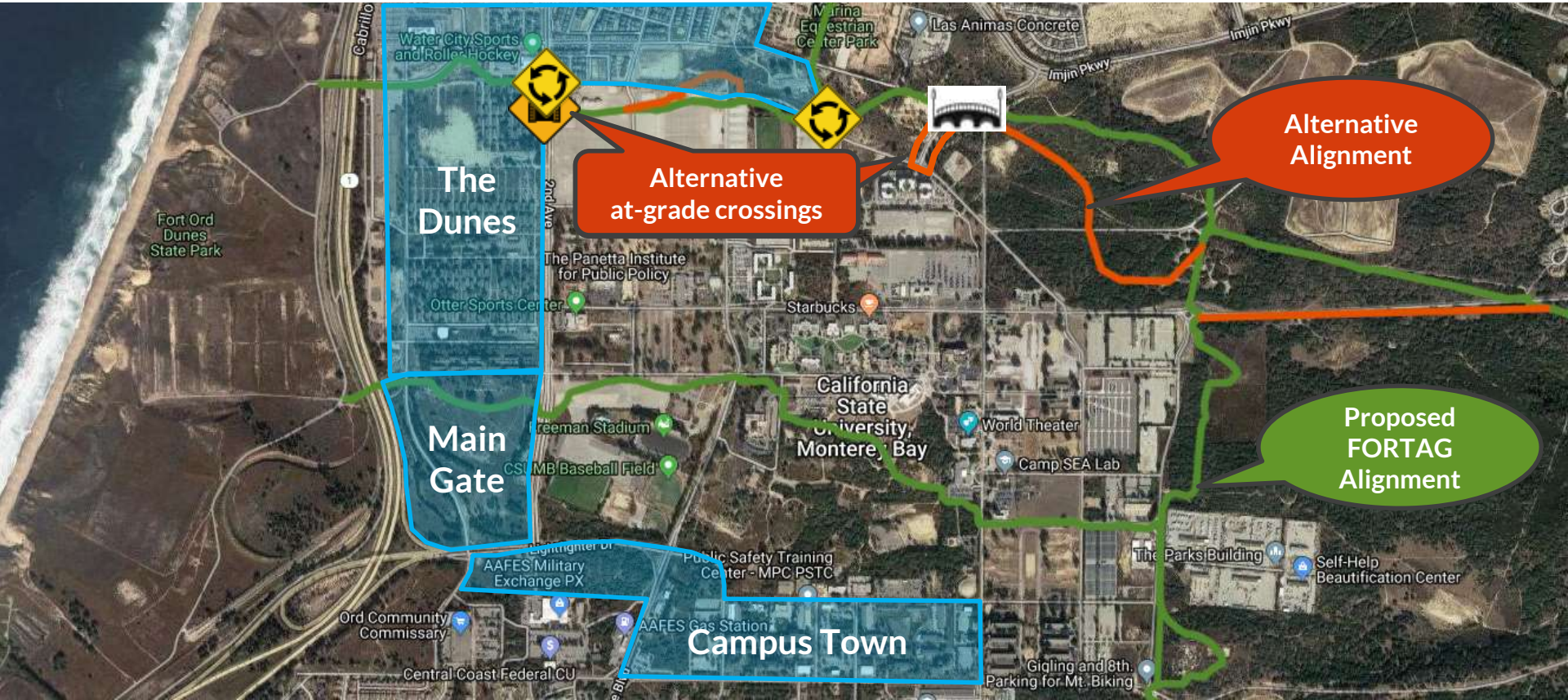


Alternative at-grade crossing

Proposed FORTAG Alignment

Alternative Alignment

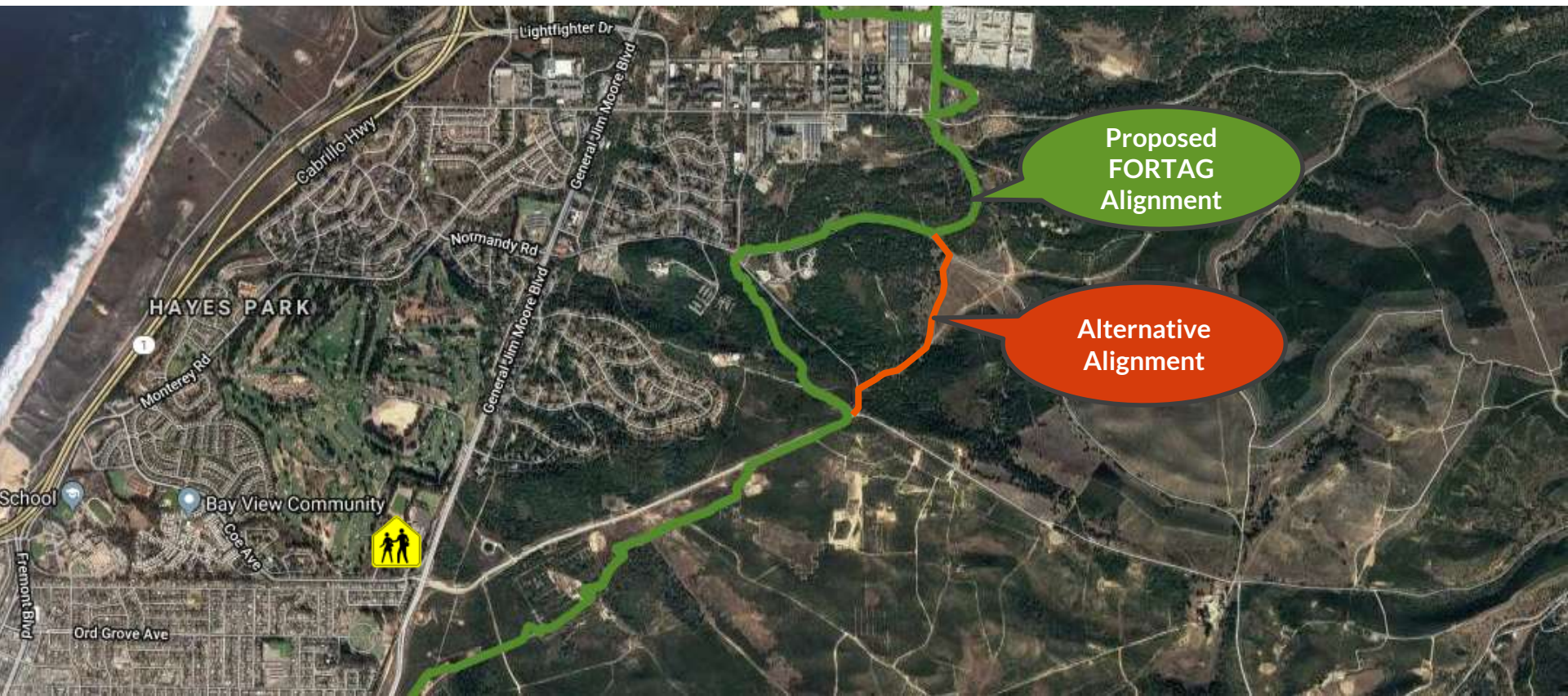
Cal State University Monterey Bay (CSUMB)

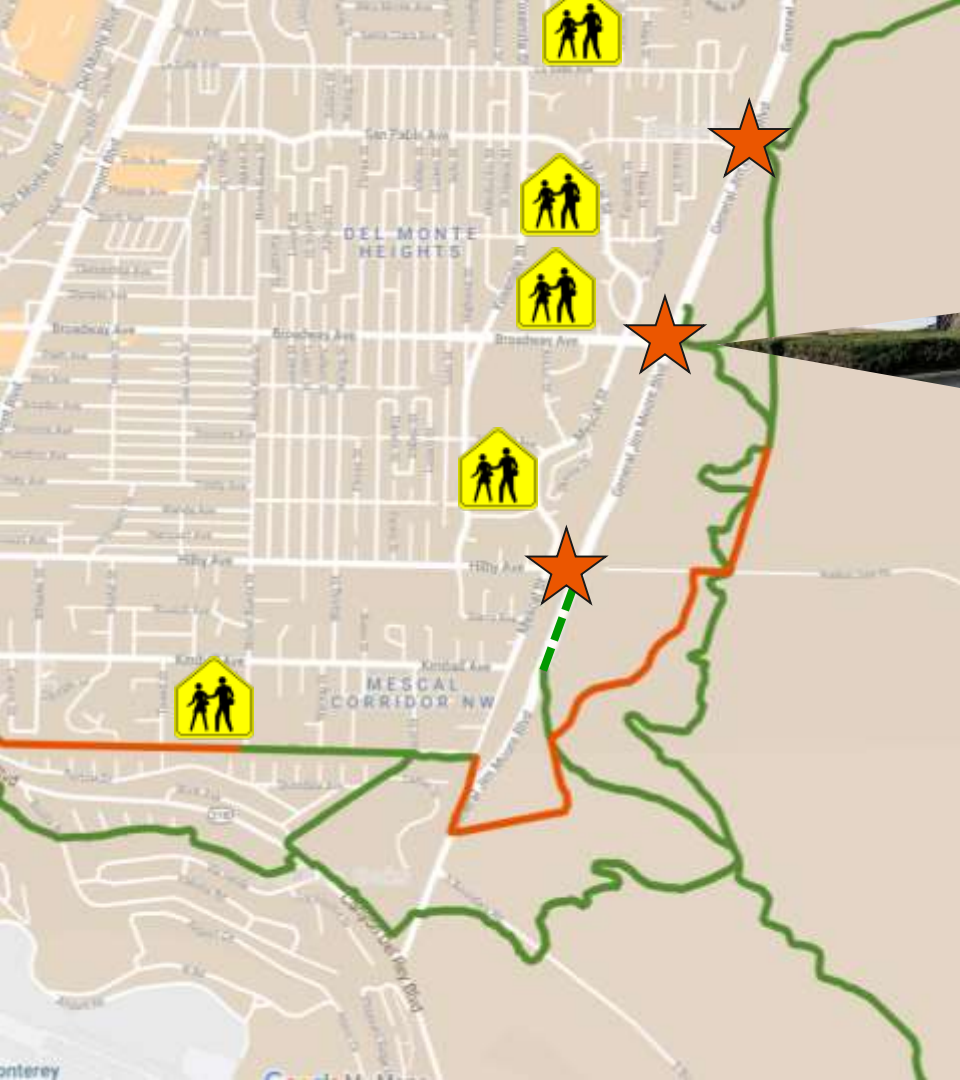


CSUMB - Marina Neighborhood Connection



National Monument Segment





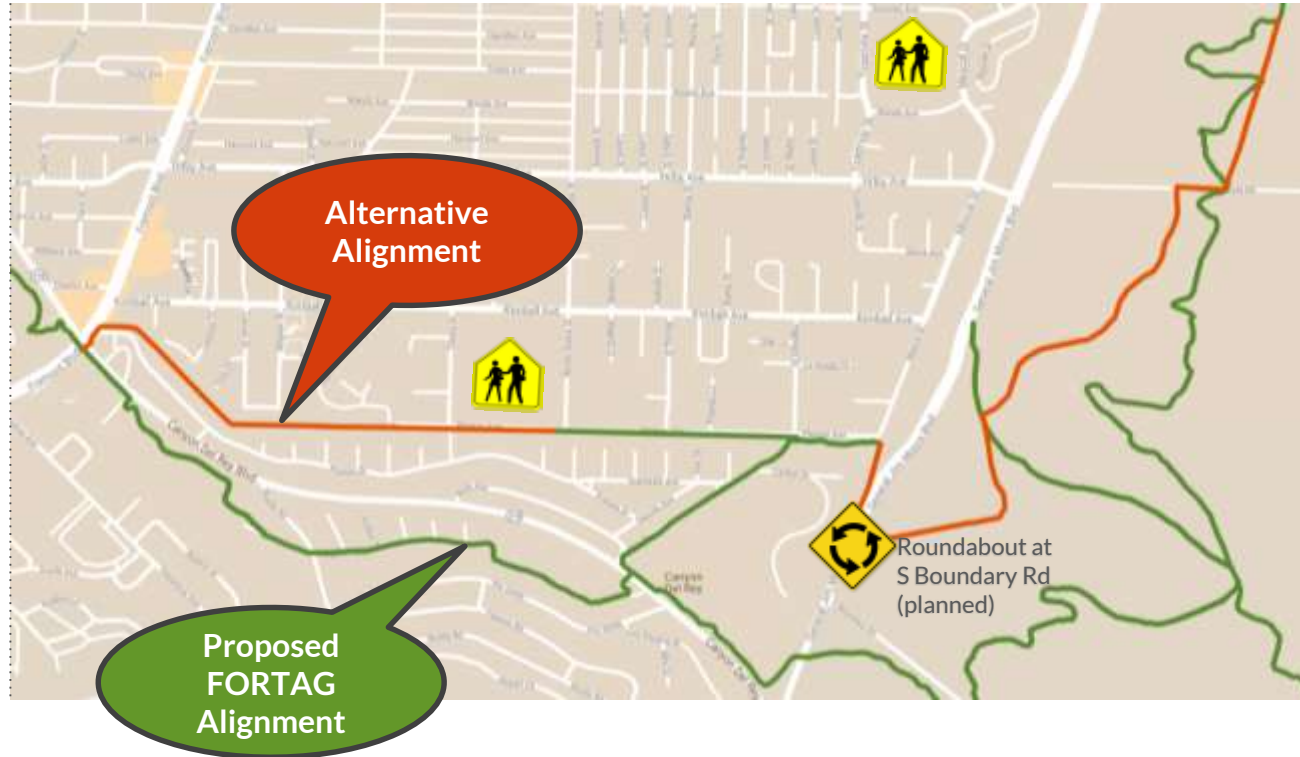
“Pop-Up”

Connections to:

- 01 | Hilby Avenue
- 02 | Broadway Avenue
- 03 | San Pablo Avenue

Alternative Alignment to Angelus Way Plumas Ave (PG&E Easement)

- *PG&E easement - recapture backyard right-of-way*
- *Tunnel effect behind Plumas Ave homes vs. user safety*
- *Missed opportunity to connect parks*

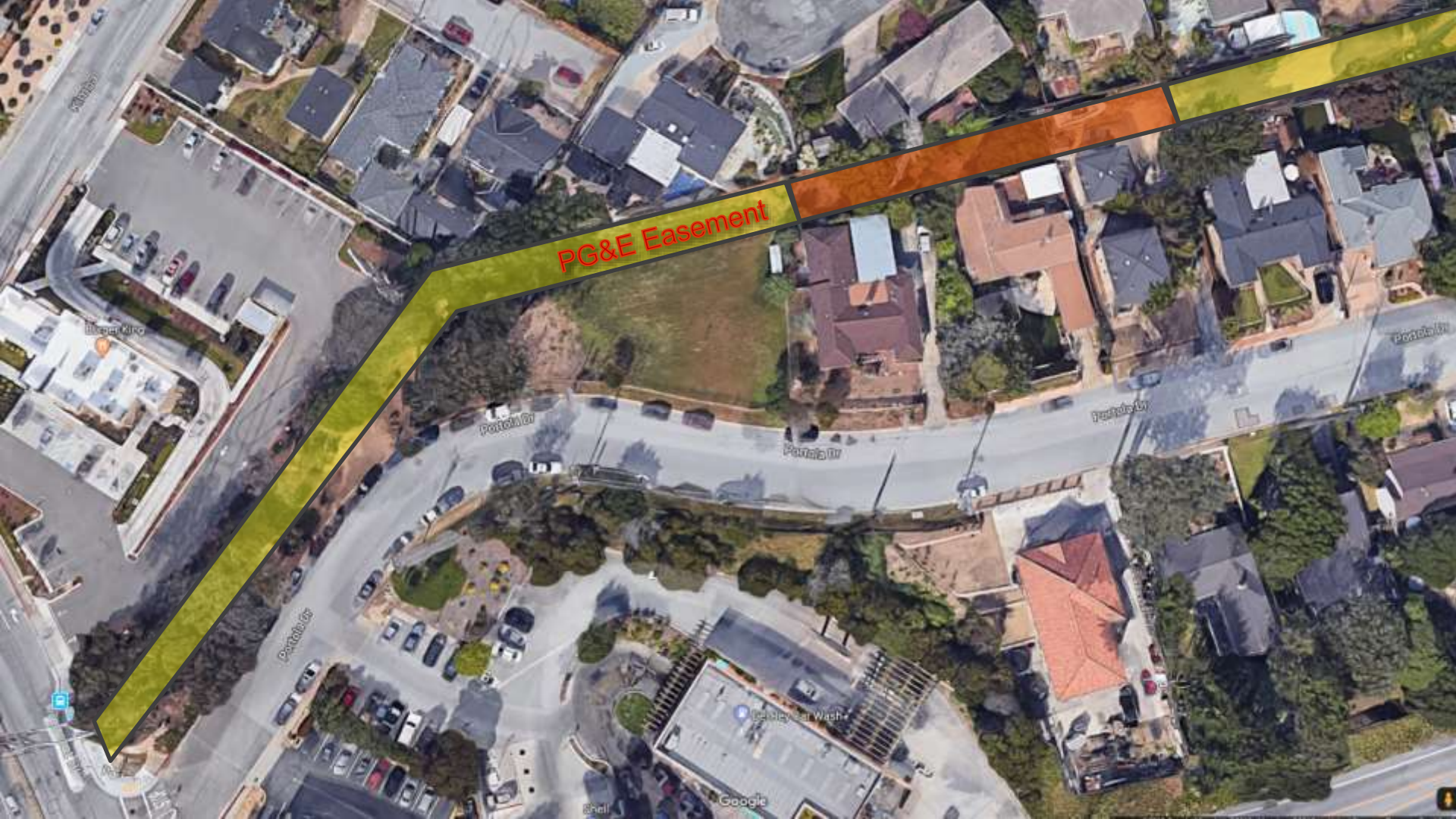


Work Park Proposed

PG&E Easement Alternative



Google



PG&E Easement

Alhambra

Illegible King

Panola Dr

Panola Dr

Panola Dr

Panola Dr

Panola Dr

Laney Car Wash

Shell

Google

Frog Pond Northern Alignment Alternative

- Avoids impacts to wetland
- Opportunities for removal of invasive plants and restoration of habitat
- Better separation of bike trail from walking path

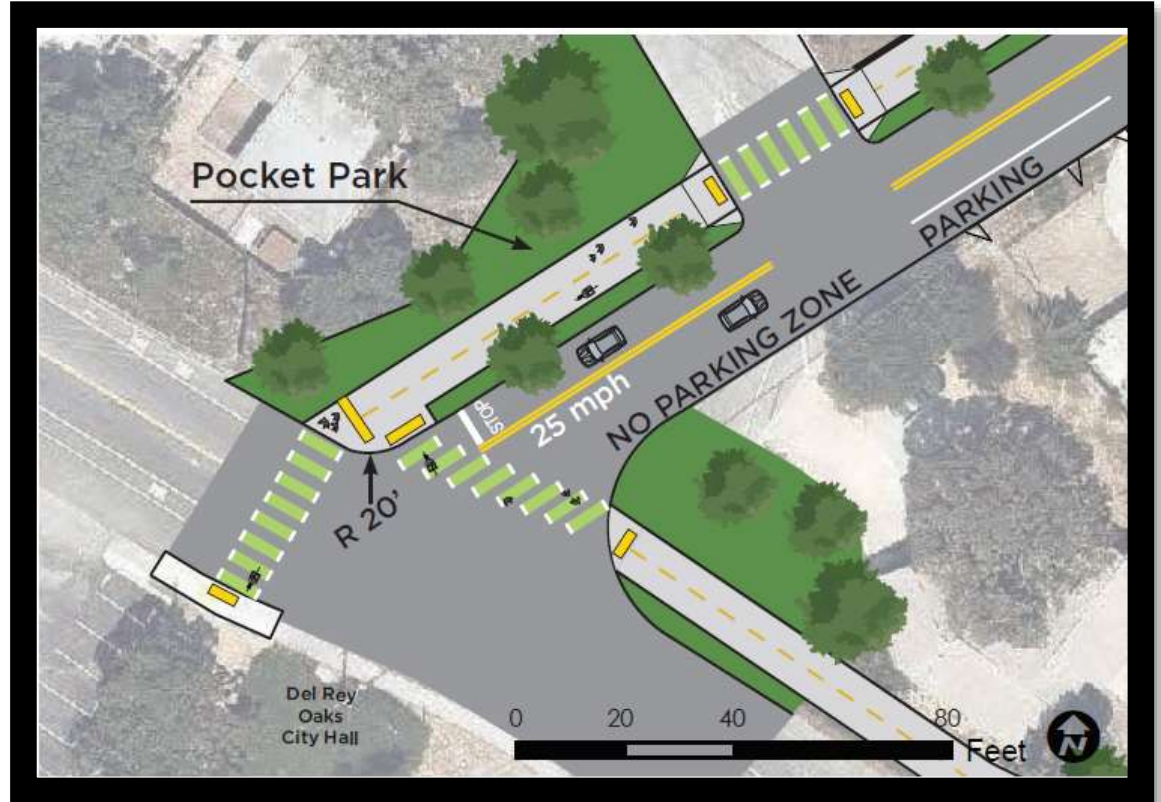


Bike/Ped Undercrossing (proposed)



At-Grade Crossing Alternative to Tunnel Carlton Drive / SR 218

- Eliminates tunnel
- Requires crosswalk warning system
- Traffic signal not warranted



Fremont Blvd to Del Monte Blvd

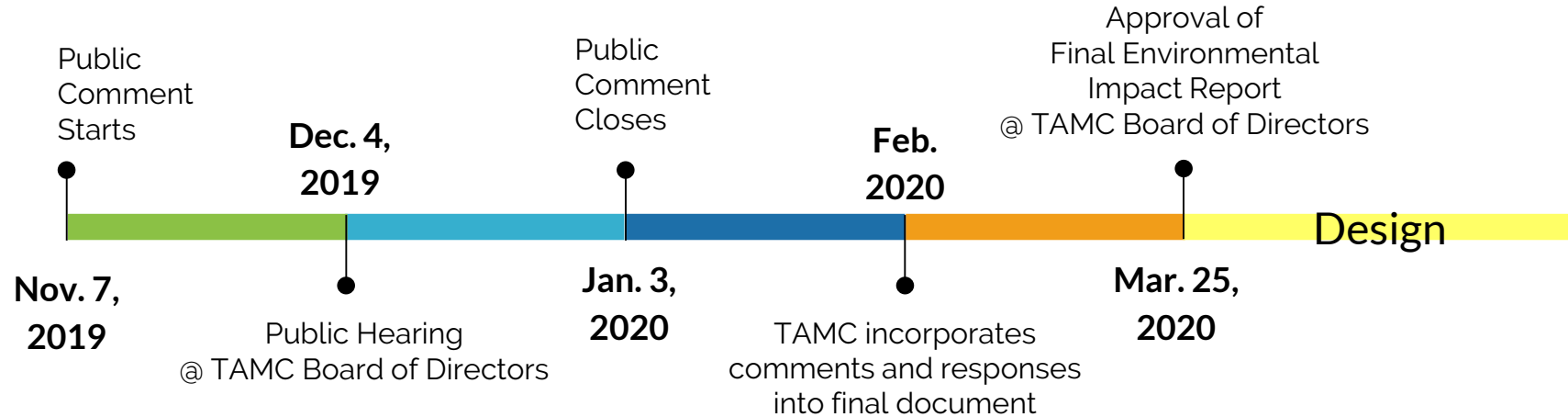


An aerial photograph of a lush, green landscape. In the foreground, there is a dense thicket of trees and shrubs. A river flows through the lower right portion of the image. In the middle ground, there is a large, open green field, possibly a park or sports field, surrounded by more trees. The background shows rolling hills and mountains under a clear blue sky.

Draft Environmental Impact Report

Public Review Period
Nov. 7, 2019 – Jan. 3, 2020

Schedule: Environmental Review



How do I submit my comments?

Draft Environmental Document

Online: http://bit.ly/TAMC_FORTAG

Hardcopies for viewing: TAMC offices,
Marina and Seaside public libraries

until January 3, 2020

Letter

TAMC
55-B Plaza Circle
Salinas, CA 93901
Attn: Rich Deal,
Principal Engineer

until January 3, 2020

Email

rich@tamcmonterey.org

November 2019 - December 2019

Public Meetings

Check
www.tamcmonterey.com
for dates

Questions?

Rich Deal
Project Manager
rich@tamcmonterey.org

Stefania Castillo
Assistant Project Manager
stefania@tamcmonterey.org

