

City of Seaside

Fort Ord Regional Trail & Greenway

Draft Environmental Impact Report



Project Background



28-mile regional trail



Environmental Impacts and Mitigations



Biological
Resources



Aesthetics



Public Safety
and Services



Hydrology and
Water Quality

Mitigation measures to reduce impact:

- Habitat mitigation and monitoring
- Biological resources avoidance and minimization
- Construction best management practices
- Invasive weed management
- Wetland restoration
- Native American resources monitoring

**Draft EIR
public
comment
period
closes
January 3,
2020**

Project Alternatives



No Build



Increase use of
existing roadways



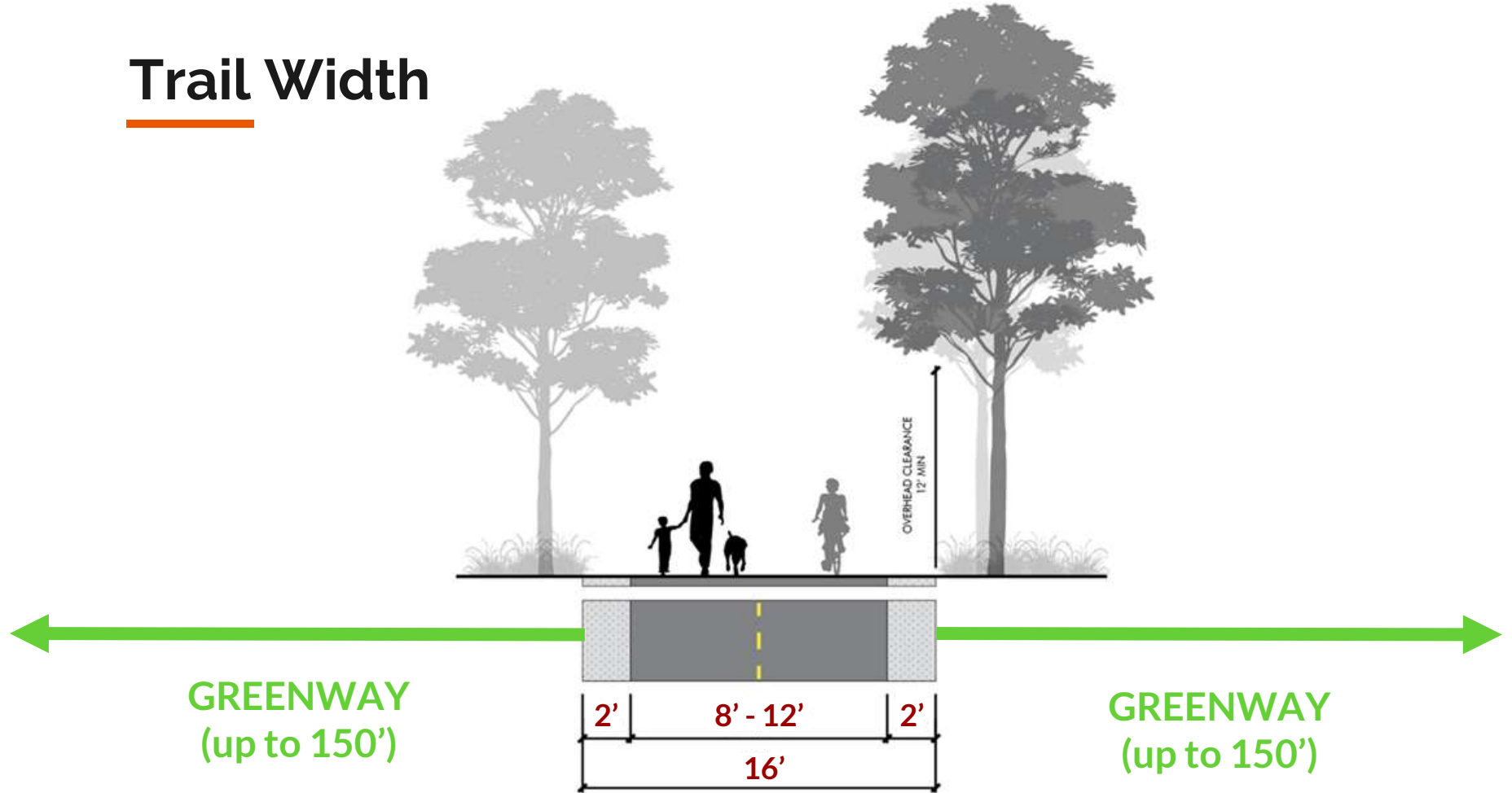
Substitute at-grade
crossings



Frog Pond Wetland Preserve
Northerly Alignment

- No trail / continued reliance on cars
- Lower bio impact / lower cost / greater vehicle-bike conflicts / less accessible
- Lower cost / lower visual impact / greater vehicle-bike and vehicle-ped conflicts
- Lower wetland impact / better separation from existing walking path

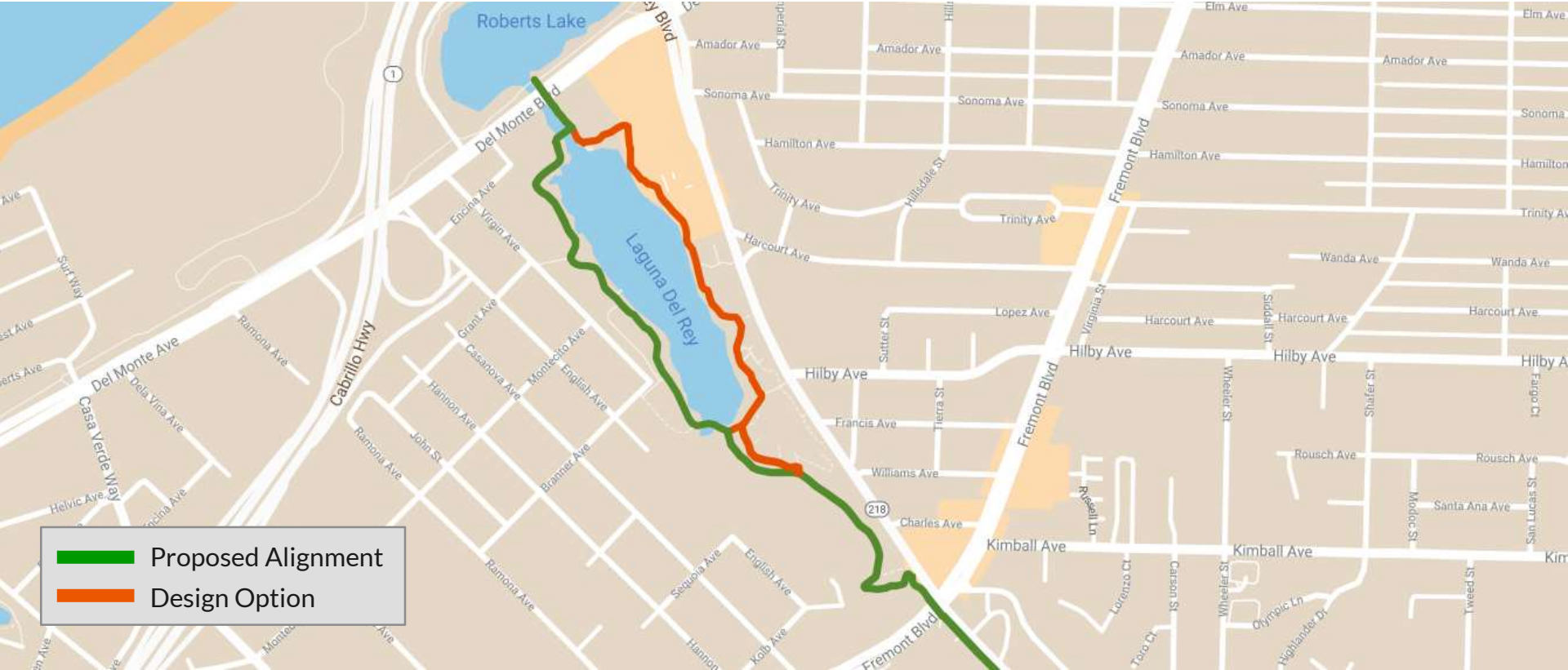
Trail Width



A gravel path leads through coastal vegetation under a blue sky with clouds. The path is light-colored and appears to be made of gravel or crushed stone. It is flanked by dense green bushes and trees. In the foreground on the left, there are bright yellow flowers and purple flowers. The sky is bright blue with scattered white clouds. The overall scene is a natural, outdoor setting.

City of Seaside

Fremont Blvd to Del Monte Blvd



Frog Pond Wetland Preserve

Design Options

Legend



Bike/Ped Undercrossing (proposed)



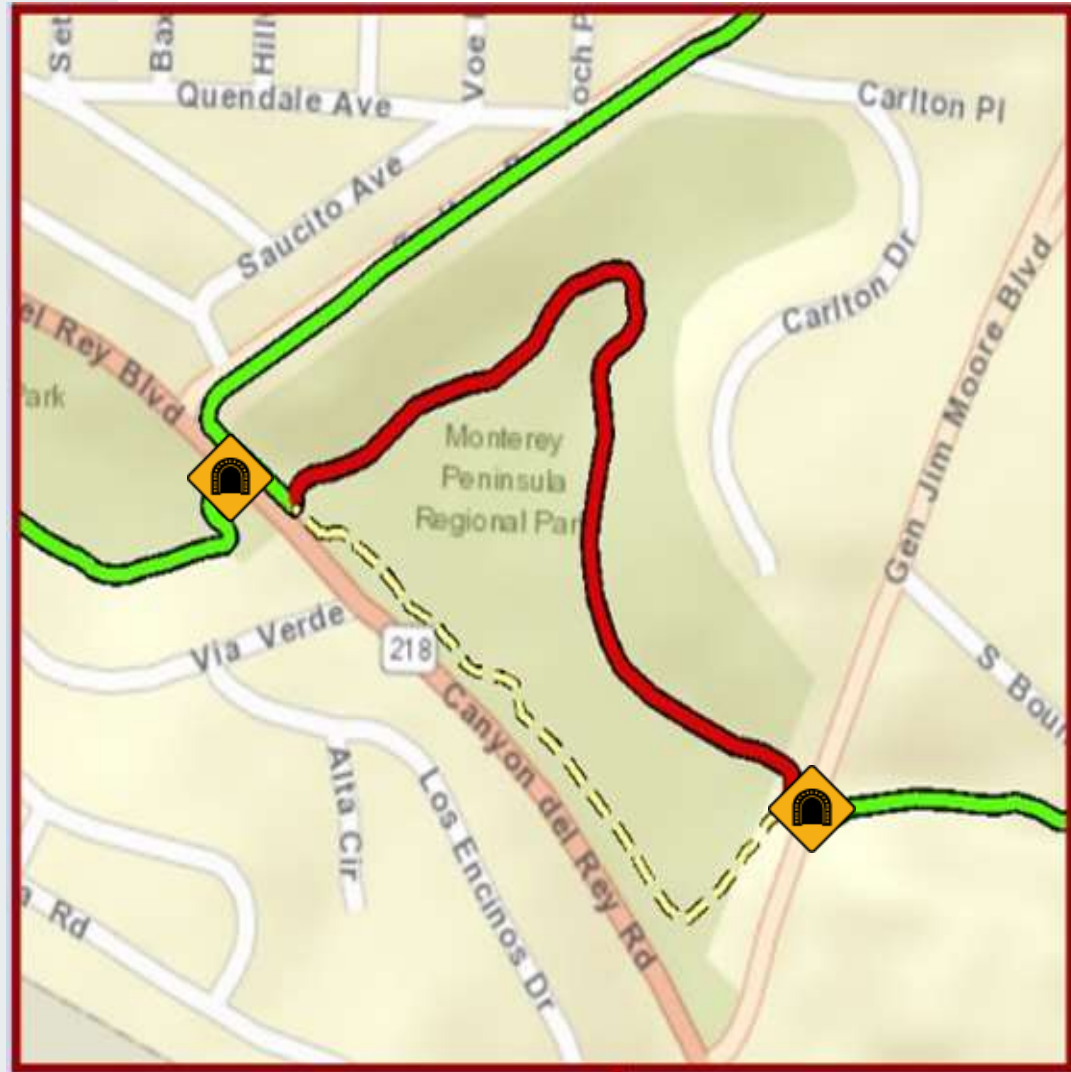
Frog Pond Alternative



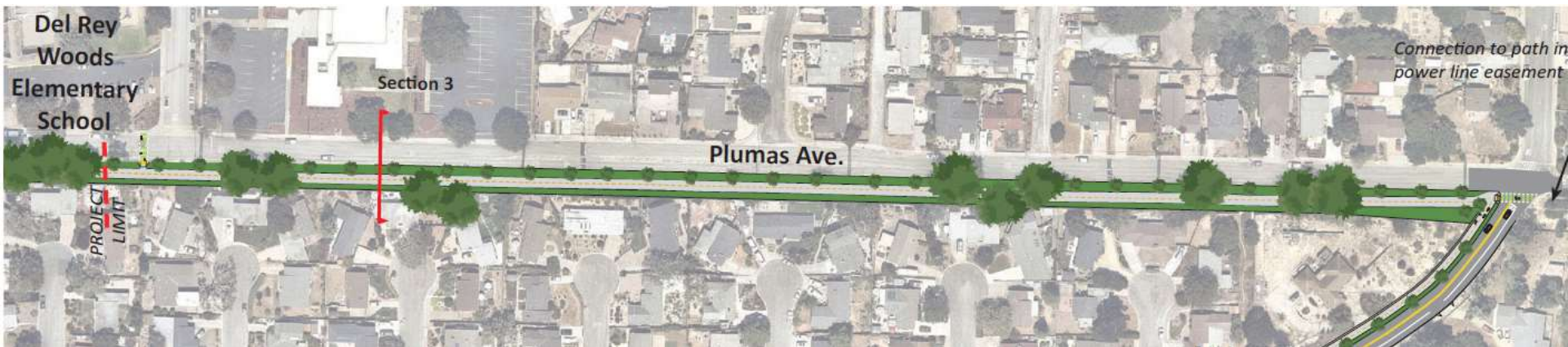
Frog Pond Alignment (proposed)



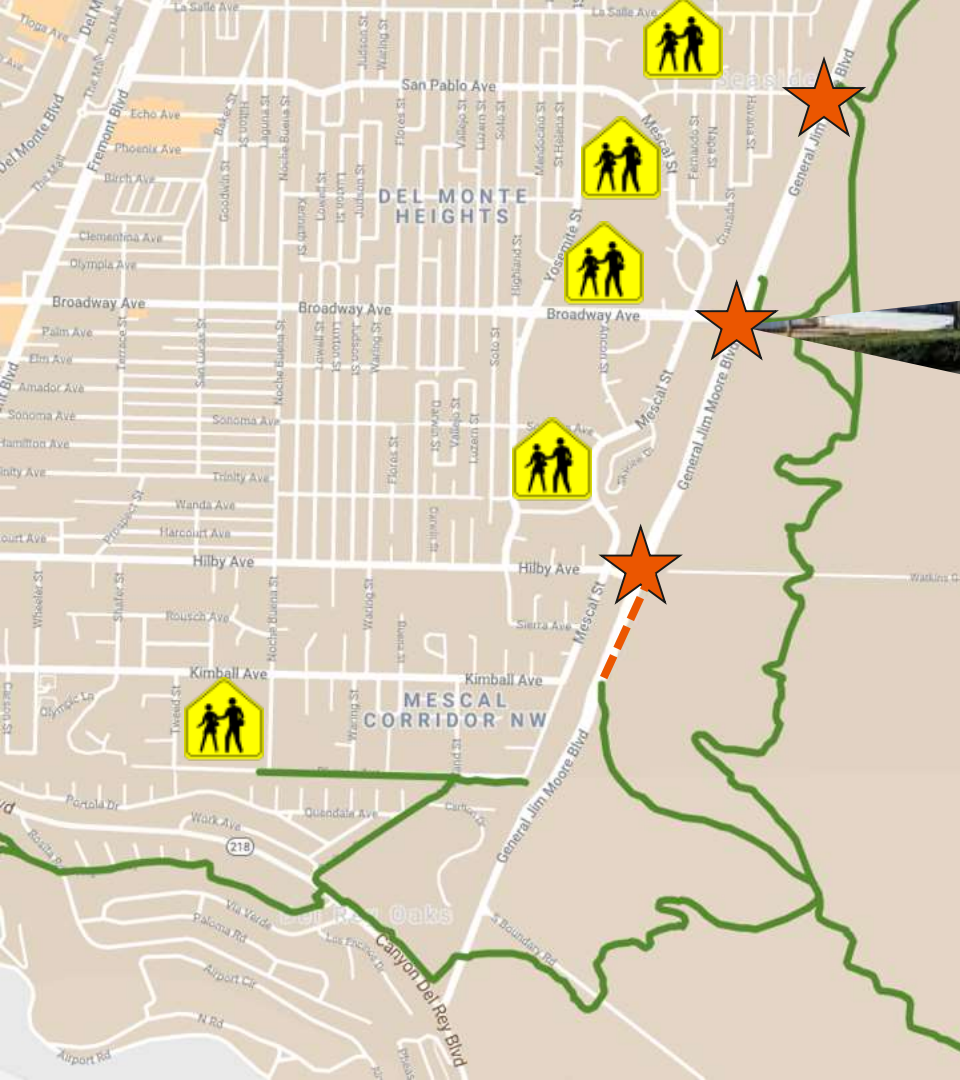
FORTAG Alignment (proposed)



Del Rey Woods Elementary Connection



★ Seaside & Marina Safe Routes to School Plan

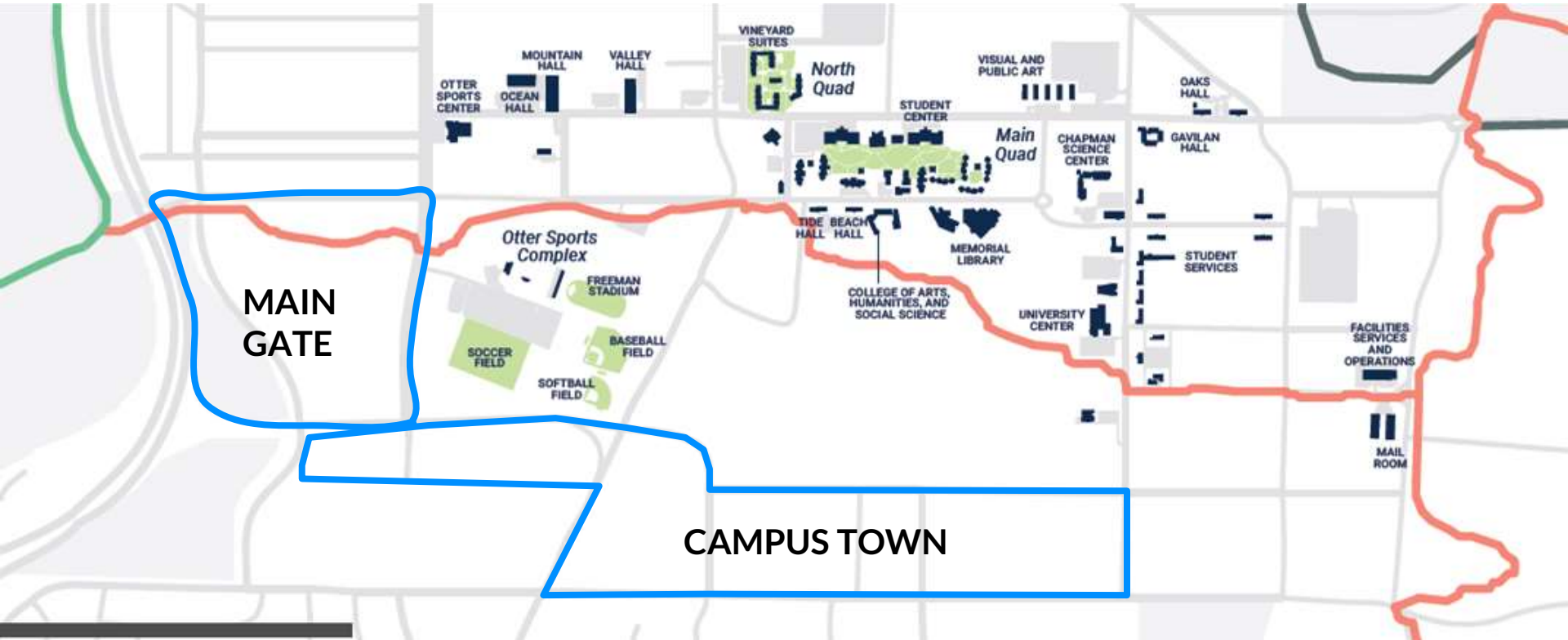


“Pop-Up”

Connections to:

- 01 | Hilby Avenue
- 02 | Broadway Avenue
- 03 | San Pablo Avenue

Main Gate & Campus Town (CSUMB Loop)



A gravel path leads through coastal vegetation under a blue sky with clouds. The path is made of light-colored gravel and curves slightly to the right. On the left side of the path, there are dense bushes with bright yellow flowers and some purple flowers. On the right side, there are green bushes and trees. The sky is blue with scattered white clouds. The overall scene is bright and natural.

Draft Environmental Impact Report

How do I submit my comments?

Draft Environmental Document

Online: http://bit.ly/TAMC_FORTAG

Hardcopies for viewing: TAMC offices,
Marina and Seaside public libraries

until January 3, 2020

Letter

TAMC
55-B Plaza Circle
Salinas, CA 93901
Attn: Rich Deal,
Principal Engineer

until January 3, 2020

Email

rich@tamcmonterey.org

November 2019 - December 2019

Public Meetings

Check
www.tamcmonterey.com
for dates

Questions?

Rich Deal
Project Manager
rich@tamcmonterey.org

Stefania Castillo
Assistant Project Manager
stefania@tamcmonterey.org

